

The following catalog
has gaps in its page
numbers, or doesn't
have any numbers.
We have chosen to
leave the page
numbering in the
order that Acrobat
assigns it.



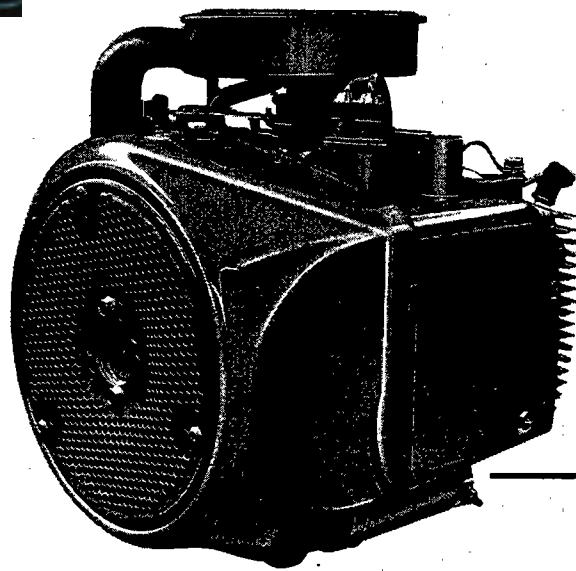
<http://stores.ebay.com/UsefulCDs>

Onan

Service and Parts Manual

BF Engine

UsefulCDs



965-0250
12-87 (SPEC A-F)
Printed in U.S.A.

<http://stores.ebay.com/UsefulCDs>

Safety Precautions

It is recommended that you read your engine manual and become thoroughly acquainted with your equipment before you start the engine.

WARNING

This symbol is used throughout this manual to warn of possible serious personal injury.

CAUTION

This symbol refers to possible equipment damage.

Fuels, electrical equipment, batteries, exhaust gases and moving parts present potential hazards that could result in serious, personal injury. Take care in following these recommended procedures.

Safety Codes

- All local, state and federal codes should be consulted and complied with.
- This engine is not designed or intended for use in aircraft. Any such use is at the owner's sole risk.

General

- Provide appropriate fire extinguishers and install them in convenient locations. Use an extinguisher rated ABC by NFPA.
- Make sure that all fasteners on the engine are secure and accurately torqued. Keep guards in position over fans, driving belts, etc.
- If it is necessary to make adjustments while the engine is running, use extreme caution when close to hot exhausts, moving parts, etc.

Protect Against Moving Parts

- Do not wear loose clothing in the vicinity of moving parts, such as PTO shafts, flywheels, blowers, couplings, fans, belts, etc.
- Keep your hands away from moving parts.

Batteries

- Before starting work on the engine, disconnect batteries to prevent inadvertent starting of the engine.
- **DO NOT SMOKE** while servicing batteries. Lead acid batteries give off a highly explosive hydrogen gas which can be ignited by flame, electrical arcing or by smoking.
- Verify battery polarity before connecting battery cables. Connect negative cable last.

Fuel System

- **DO NOT** fill fuel tanks while engine is running.

- **DO NOT** smoke or use an open flame in the vicinity of the engine or fuel tank. Internal combustion engine fuels are highly flammable.
- Fuel lines must be of steel piping, adequately secured, and free from leaks. Piping at the engine should be approved flexible line. Do not use copper piping for flexible lines as copper will work harden and become brittle enough to break.
- Be sure all fuel supplies have a positive shutoff valve.

Exhaust System

- Exhaust products of any internal combustion engine are toxic and can cause injury, or death if inhaled. All engine applications, especially those within a confined area, should be equipped with an exhaust system to discharge gases to the outside atmosphere.
- Do not use exhaust gases to heat a compartment.
- Make sure that your exhaust system is free of leaks. Ensure that exhaust manifolds are secure and are not warped by bolts unevenly torqued.

Exhaust Gas is Deadly!

Exhaust gases contain carbon monoxide, a poisonous gas that might cause unconsciousness and death. It is an odorless and colorless gas formed during combustion of hydrocarbon fuels. Symptoms of carbon monoxide poisoning are:

- Dizziness
- Headache
- Weakness and Sleepiness
- Vomiting
- Muscular Twitching
- Throbbing in Temples

If you experience any of these symptoms, get out into fresh air immediately, shut down the unit and do not use until it has been inspected.

The best protection against carbon monoxide inhalation is proper installation and regular, frequent inspections of the complete exhaust system. If you notice a change in the sound or appearance of exhaust system, shut the unit down immediately and have it inspected and repaired at once by a competent mechanic.

Cooling System

- Coolants under pressure have a higher boiling point than water. **DO NOT** open a radiator pressure cap when coolant temperature is above 212°F (100°C) or while engine is running.

Keep the Unit and Surrounding Area Clean

- Make sure that oily rags are not left on or near the engine.
- Remove all unnecessary grease and oil from the unit. Accumulated grease and oil can cause overheating and subsequent engine damage and present a potential fire hazard.

INTRODUCTION

This catalog applies to Tractor Application BF Engines. Parts are arranged in groups of related items. Each illustrated part is identified by a reference number corresponding to the same reference number in the parts list for that group. Parts illustrations are typical. Using the *Model* and *Spec No.* from the nameplate, select parts from this catalog that apply to your engine. Unless otherwise mentioned in the description, parts are interchangeable between models. Right and left sides are determined by facing the blower end (front) of the engine.

TABLE OF CONTENTS

TITLE	PAGE	
INTRODUCTION	29	
STANDARD ENGINE GROUPS	29	
Camshaft, Crankshaft, Flywheel and Piston	31	
Block, Cylinder	32,33	
Gearcase, Oil Base and Oil Pump	34,35	
Fuel System	36,37	
Carburetor Parts	38,39	
Alternator, Blower Housing, Governor and Starter	40,41	
Ignition System	42	
Starter Parts - Spec A	43	
Starter Parts - Begin Spec B	44	
Service Kits and Miscellaneous	44	Optional Group
OPTIONAL EQUIPMENT GROUPS	45	Number
Filter, Oil - Spin-On	46	1
Box, Breaker - Top Adjusted	47	2
Carburetor with Integral Fuel Pump	48,49	3

STANDARD ENGINE PARTS SECTION

This section contains the engine parts used on standard engines.

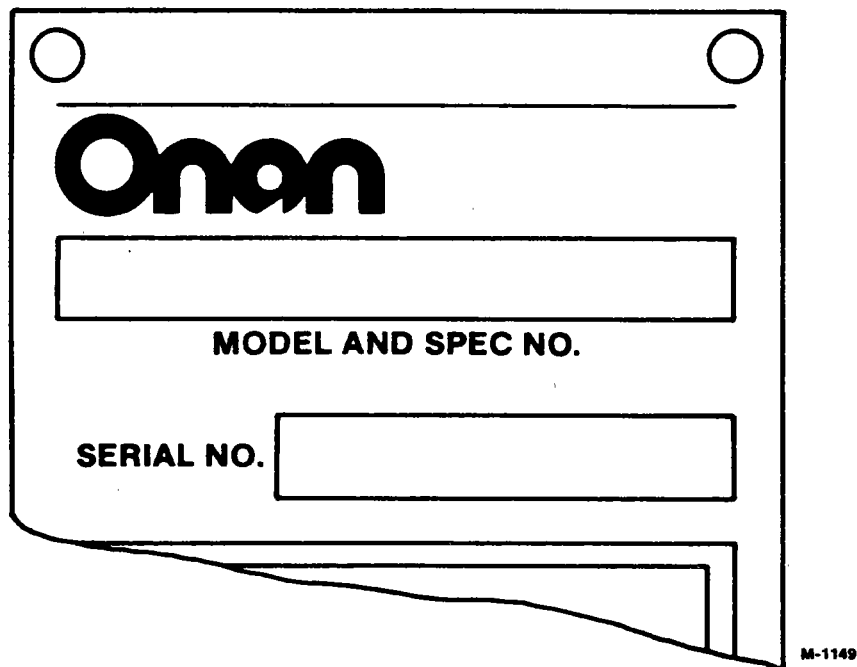
GENERAL INFORMATION

For parts or service, contact the dealer from whom you purchased this equipment or refer to your Nearest Authorized Onan Parts and Service Center.

To avoid errors or delay in filling your parts order, please furnish all information requested.

Always refer to the nameplate on your unit.

1. Always give the MODEL, SPEC NO. and SERIAL NO.

A rectangular nameplate form with two circular punch holes at the top. The Onan logo is prominently displayed in the upper left. Below the logo is a large rectangular box labeled "MODEL AND SPEC NO.". Further down is another rectangular box labeled "SERIAL NO.". The bottom right corner of the form is folded over, revealing a smaller section with the text "M-1149".

Onan

MODEL AND SPEC NO.

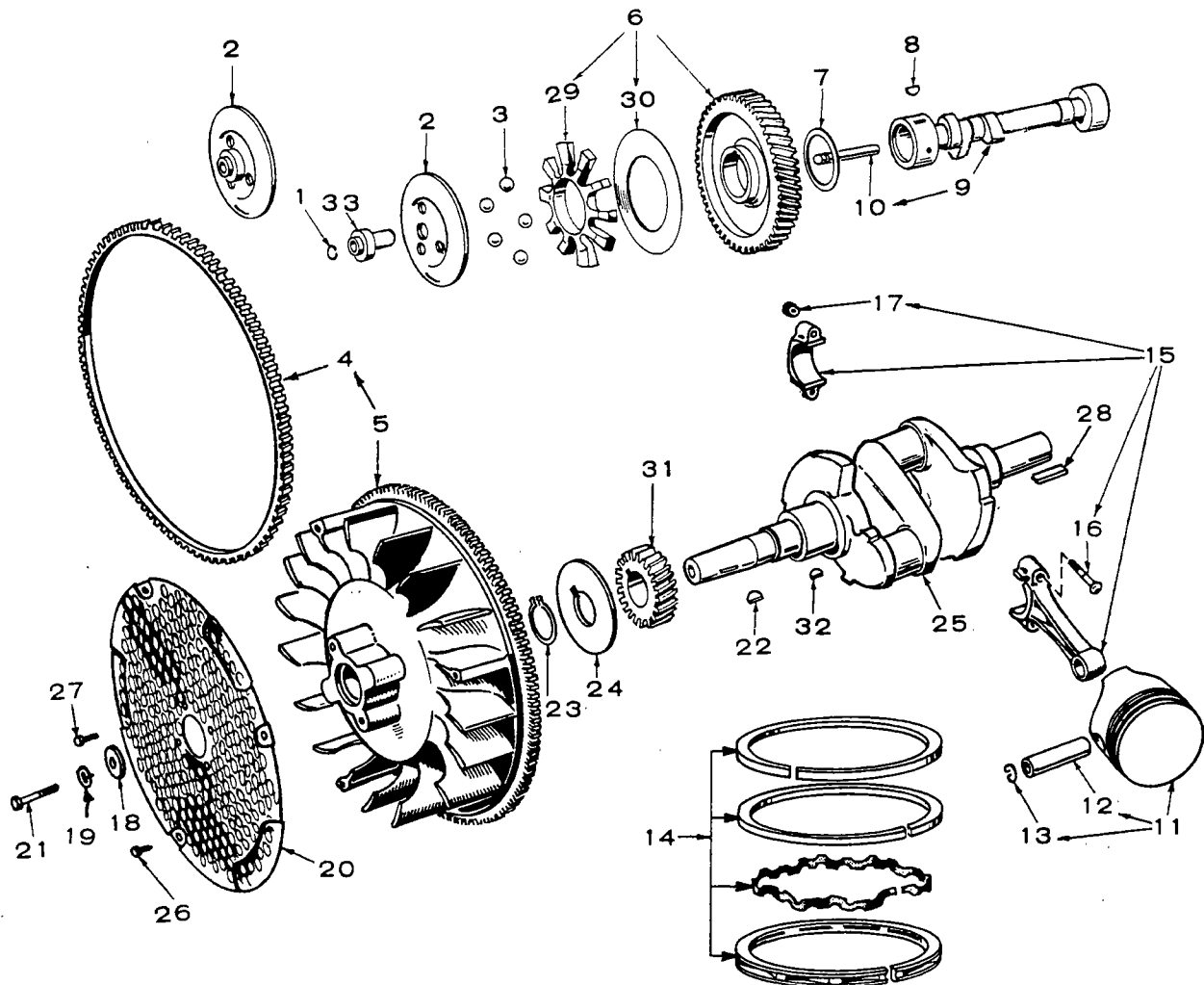
SERIAL NO.

M-1149

For handy reference, insert "YOUR" nameplate information in the spaces above.

2. Do not order by reference number; always use part number and description.
3. Give the part number, description and quantity needed of each item. If an older part cannot be identified, return the part prepaid to your dealer or nearest Onan Parts and Service Center. Print your name and address plainly on the package. Write a letter to the same address stating the reason for returning the part.
4. State definite shipping instructions. Any claim for loss or damage to your unit in transit should be filed promptly against the transportation company making the delivery. Shipments are complete unless the packing list indicates items are back ordered.

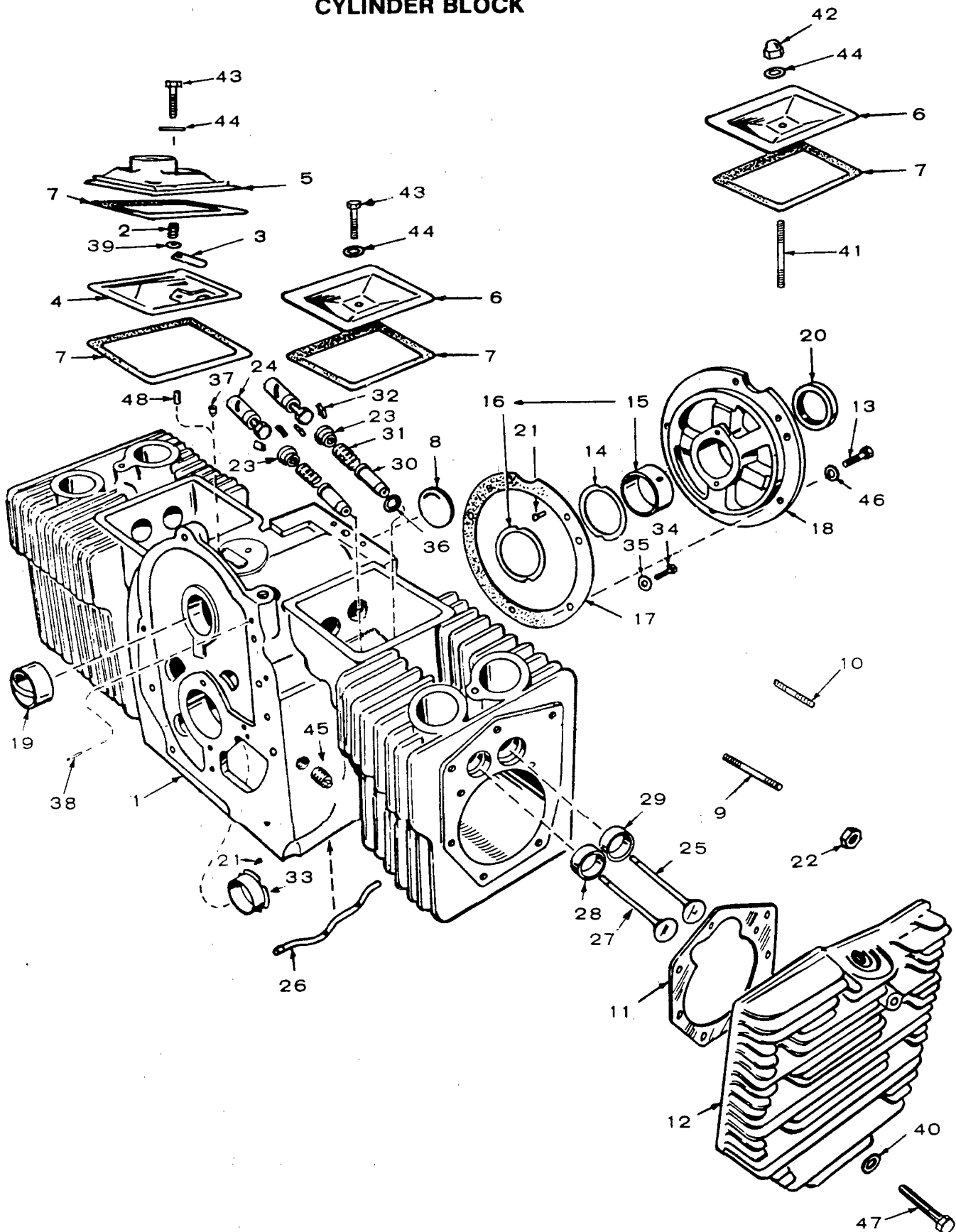
CAMSHAFT, CRANKSHAFT, FLYWHEEL AND PISTON



REF. NO.	PART NO.	QTY. USED	PART DESCRIPTION
1	150-0078	1	Ring, Retaining
2	CUP, GOVERNOR		
	150-1520	1	Begin Spec F
	150-1116	1	Spec A through E
3	510-0015	5	Ball, Governor
4	104-0779	1	Gear, Ring
5	134-2432	1	Flywheel (Includes Ring Gear)
6	105-0332	1	Gear, Camshaft
7	105-0004	1	Washer, Thrust
8	515-0001	1	Key, Camshaft Gear Mounting
9	105-0402	1	Camshaft (Includes Center Pin)
10	150-0075	1	Pin, Center - Camshaft
11	PISTON (Includes Pin and Retaining Rings)		
	112-0134	2	Standard
	112-0134-05	2	.005" Oversize
	112-0134-10	2	.010" Oversize
	112-0134-20	2	.020" Oversize
	112-0134-30	2	.030" Oversize
	112-0134-40	2	.040" Oversize
12	112-0122	2	Pin, Piston
13	518-0311	4	Ring, Retaining
14	RING SET, PISTON		
	113-0174	2	Standard
	113-0174-05	2	.005" Oversize
	113-0174-10	2	.010" Oversize
	113-0174-20	2	.020" Oversize
	113-0174-30	2	.030" Oversize
	113-0174-40	2	.040" Oversize

REF. NO.	PART NO.	QTY. USED	PART DESCRIPTION
15	ROD, CONNECTING (Includes Bolt and Nut)		
	114-0225	2	Standard
	114-0225-10	2	.010" Undersize
	114-0225-20	2	.020" Undersize
	114-0225-30	2	.030" Undersize
16	114-0228	4	Bolt, Special - Connecting Rod
17	870-0137	4	Nut, Locking - Connecting Rod
18	526-0017	1	Washer, Flat (7/16)
19	850-0055	1	Washer, Lock - Spring (7/16)
20	134-2384	1	Guard, Flywheel
21	104-0170	1	Screw, Hex Head (7/16-14 x 4")
22	515-0227	1	Key, Flywheel Mounting
23	518-0014	1	Ring, Retaining
24	104-0043	1	Washer, Gear Retaining
25	104-0889	1	Crankshaft (Also order Key Kit 515-0227 for Spec A through C replacement)
26	821-0010	3	Screw, Hex Washer Head (1/4-20 x 1/2")
27	821-0014	2	Screw, Hex Washer Head (5/16-18 x 1/2")
28	515-0103	1	Key, Stub Shaft
29	150-1257	1	Spacer, Flyball
30	150-0077	1	Plate, Flyball
31	104-0032	1	Gear, Crankshaft
32	515-0001	1	Key, Crankshaft Gear Mounting
33	150-1519	1	Hub, Governor Cup - Begin Spec F

CYLINDER BLOCK



CYLINDER BLOCK

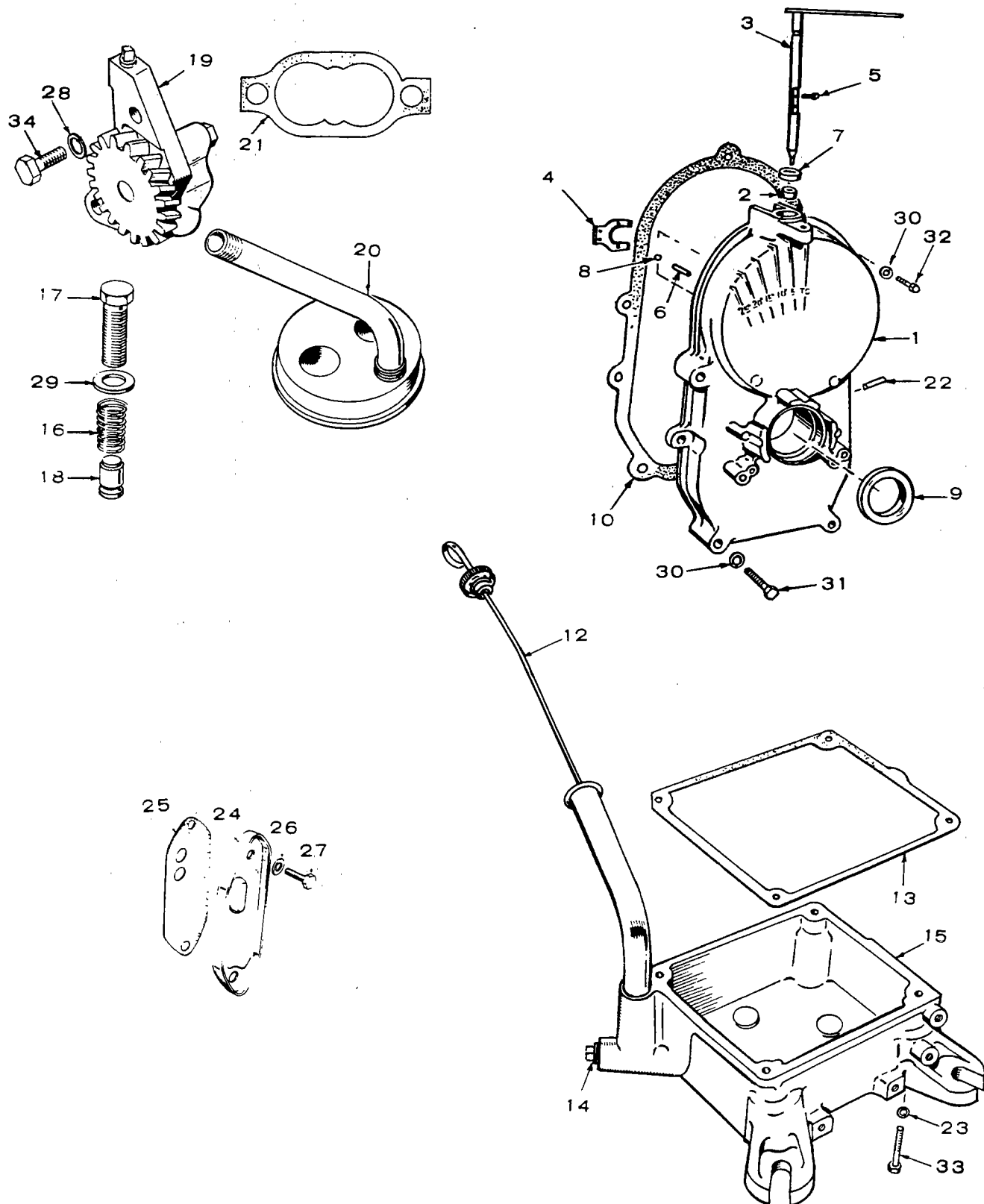
REF. NO.	PART NO.	QTY. USED	PART DESCRIPTION
1	BLOCK ASSEMBLY, CYLINDER (Includes Parts Marked †)		
	110-1943	1	Spec A through D (With Oil Filter Ports)
	110-2351	1	Begin Spec E (Without Oil Filter Ports)
2	123-1174	1	Spring, Breather Valve
3	123-1175	1	Reed, Breather Valve
4	123-1173	1	Baffle, Breather Valve
5	110-1878	1	Cover, Valve - with Breather Port
6	110-1879	1	Cover, Valve
7	110-1921	3	Gasket, Valve Cover
8	517-0048	1	†Plug, Welch (1-5/8")
9	520-0424	6	Stud (5/16 x 2 - 5/16") Spec A through E
10	520-0759	12	Stud (5/16 x 2 - 1/16") Spec A through E
11	110-1920	2	Gasket, Cylinder Head
12	HEAD, CYLINDER		
	110-1924	1	Right Side
	110-1925	1	Left Side
13	800-0051	5	†Screw, Hex Head (3/8-16 x 1-1/4")
14	104-0776	As Req.	†Shim (.005")
15	BEARING, SLEEVE - CRANKSHAFT, REAR (Includes Thrust Washer)		
	101-0450	1	†Standard
	101-0450-02	1	.002" Undersize
	101-0450-10	1	.010" Undersize
	101-0450-20	1	.020" Undersize
	101-0450-30	1	.030" Undersize
16	104-0575	2	†Washer, Thrust
17	101-0415	1	†Gasket, Bearing Plate
18	101-0439	1	†Plate, Bearing
19	101-0405	2	†Bearing, Sleeve - Camshaft
20	509-0041	1	†Seal, Oil - Crankshaft, Rear
21	516-0072	4	†Pin, Drive - Bearing Stop
22	110-0445	18	Nut, Hex (5/16-24) - Spec A through E
23	110-0893	4	Retainer, Spring
24	TAPPET, VALVE		
	115-0006	4	Standard
	115-0006-02	4	.002" Oversize
	115-0006-05	4	.005" Oversize
25	110-1808	2	Valve, Intake
26	120-0706	1	†Tube, Oil - Crankcase

REF. NO.	PART NO.	QTY. USED	PART DESCRIPTION
27	110-1809	2	Valve, Exhaust
28	INSERT, VALVE SEAT - EXHAUST		
	110-0245	2	†Standard
	110-0245-02	2	.002" Oversize
	110-0245-05	2	.005" Oversize
	110-0245-10	2	.010" Oversize
	110-0245-25	2	.025" Oversize
29	INSERT, VALVE SEAT - INTAKE		
	110-0197	2	†Standard
	110-0197-02	2	.002" Oversize
	110-0197-05	2	.005" Oversize
	110-0197-10	2	.010" Oversize
	110-0197-25	2	.025" Oversize
30	110-1935	4	†Guide, Valve
31	110-0539	4	Spring, Valve
32	110-0639	8	Lock, Valve Spring
33	*BEARING, FLANGED, SLEEVE - CRANKSHAFT, FRONT		
	101-0432	1	†Standard
	101-0432-02	1	.002" Undersize
	101-0432-10	1	.010" Undersize
	101-0432-20	1	.020" Undersize
	101-0432-30	1	.030" Undersize
34	800-0046	2	Screw, Hex Head (3/8-16 x 1/2")
35	526-0066	2	Washer, Flat - Copper (3/8)
36	110-0068	2	†Gasket, Valve Guide - Intake
37	517-0120	1	†Plug, Pipe - Crankcase Vacuum Port (Units with separate fuel pump)
38	516-0141	2	†Pin, Gearcase Align
39	526-0018	1	Washer, Flat (1/4)
40	526-0122	18	Washer, Flat (5/16)
41	520-0757	2	Stud (1/4 x 2-1/16") - Spec A through C
42	866-0001	2	Nut, Acorn (1/4-20) - Spec A through C
43	800-0010	2	Screw, Hex Head (1/4-20 x 1-3/4") - Begin Spec D
44	526-0063	2	Washer, Flat - Copper (1/4)
45	502-0080	1	Plug, Pipe - Square Head
46	850-0050	5	†Washer, Lock - Spring (3/8")
47	SCREW, CAP - HEX HEAD - Begin Spec F		
	800-0540	6	Special
	800-0541	12	Special
48	149-1299	1	†Tube, Crankcase Vacuum Port (Units with integral fuel pump)

† - Included in Cylinder Block Assembly.

* - Flanged bearing replaces thrust washer and the unflanged front crankshaft bearing.

GEARCASE, OIL BASE AND OIL PUMP

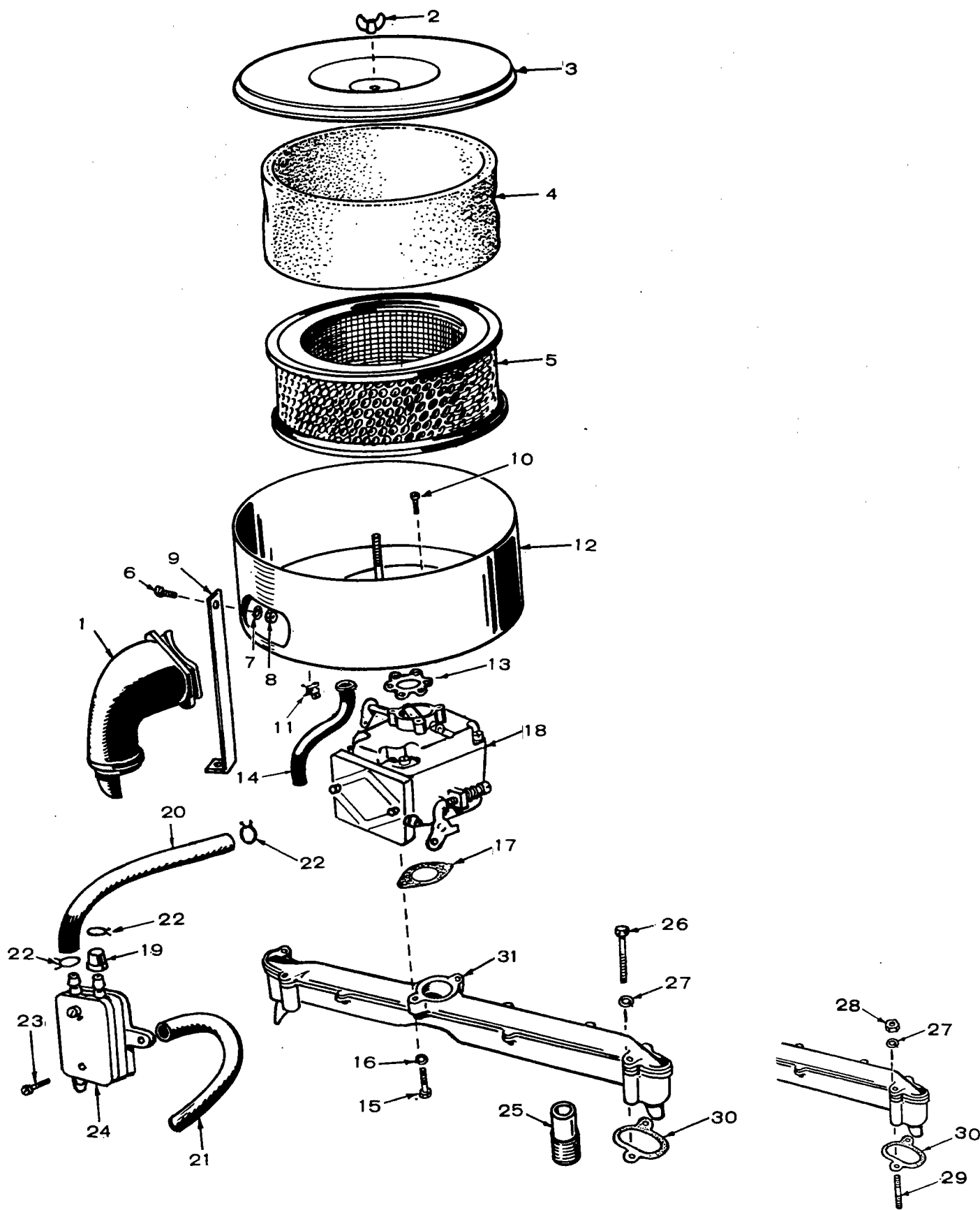


GEARCASE, OIL BASE AND OIL PUMP

REF. NO.	PART NO.	QTY. USED	PART DESCRIPTION	REF. NO.	PART NO.	QTY. USED	PART DESCRIPTION
1	GEARCASE ASSEMBLY (Includes Parts Marked *)			18	120-0398	1	Plunger, Bypass Valve
			Engines With Separate Fuel Pump	19	120-0491	1	Pump, Oil (Internal parts not sold separately)
	103-0501	1	Begin Spec D	20	120-0713	1	Cup, Oil Pump Intake
	103-0409	1	Spec A through C	21	120-0161	1	Gasket Kit - Oil Pump
			Engines With Carburetor and	22	149-1299	1	*Tube, Vacuum Line - Gearcase
			Integral Fuel Pump (Does not include vacuum line tube)				port
	103-0498	1	Begin Spec D	23	850-0050	4	Washer, Lock - Spring (3/8)
	103-0396	1	Spec A through C	24	122-0359	1	Cover, Oil Outlet - Spec A thru D
2	510-0105	1	*Bearing, Sleeve - Governor Shaft	25	122-0321	1	Gasket, Oil Outlet - Spec A thru D
3	*SHAFT AND ARM ASSEMBLY - GOVERNOR			26	526-0122	2	Washer, Flat (5/16) - Spec A thru D
	150-1470	1	Begin Spec D	27	800-0026	2	Screw, Hex Head - Spec A thru D (5/16-18 x 3/4")
	150-1349	1	Spec A through C	28	850-0040	2	Washer, Lock - Spring (1/4)
4	150-1187	1	*Yoke, Shaft - Governor	29	526-0066	1	Washer, Flat - Copper (3/8)
5	815-0046	2	*Screw, Pan Head (8-32 x 3/8")	30	526-0065	5	Washer, Flat - Copper (5/16)
6	516-0130	1	*Pin, Dowel - Cup Stop	31	800-0032	4	Screw, Hex Head (5/16-18 x 1-3/4)
7	509-0008	1	*Seal, Oil - Governor Shaft	32	800-0034	1	Screw, Hex Head (5/16-18 x 2-1/4")
8	510-0014	1	*Ball, Bearing - Governor Shaft	33	800-0056	4	Screw, Hex Head (3/8-16 x 2-1/2")
9	509-0040	1	*Seal, Oil - Crankshaft	34	800-0007	2	Screw, Hex Head (1/4-20 x 1")
10	103-0408	1	Gasket, Gearcase				
12	123-1138	1	Cap and Indicator, Oil Fill				
13	102-0693	1	Gasket, Oil Base				
14	505-0056	2	Plug, Pipe - Oil Drain				
15	102-0730	1	Base, Oil - Includes Plugs				
16	120-0140	1	Spring, Bypass Valve				
17	801-0050	1	Screw, Hex Head (3/8-24 x 1") - Bypass Valve				

* - Included in Gearcase Assembly

FUEL SYSTEM

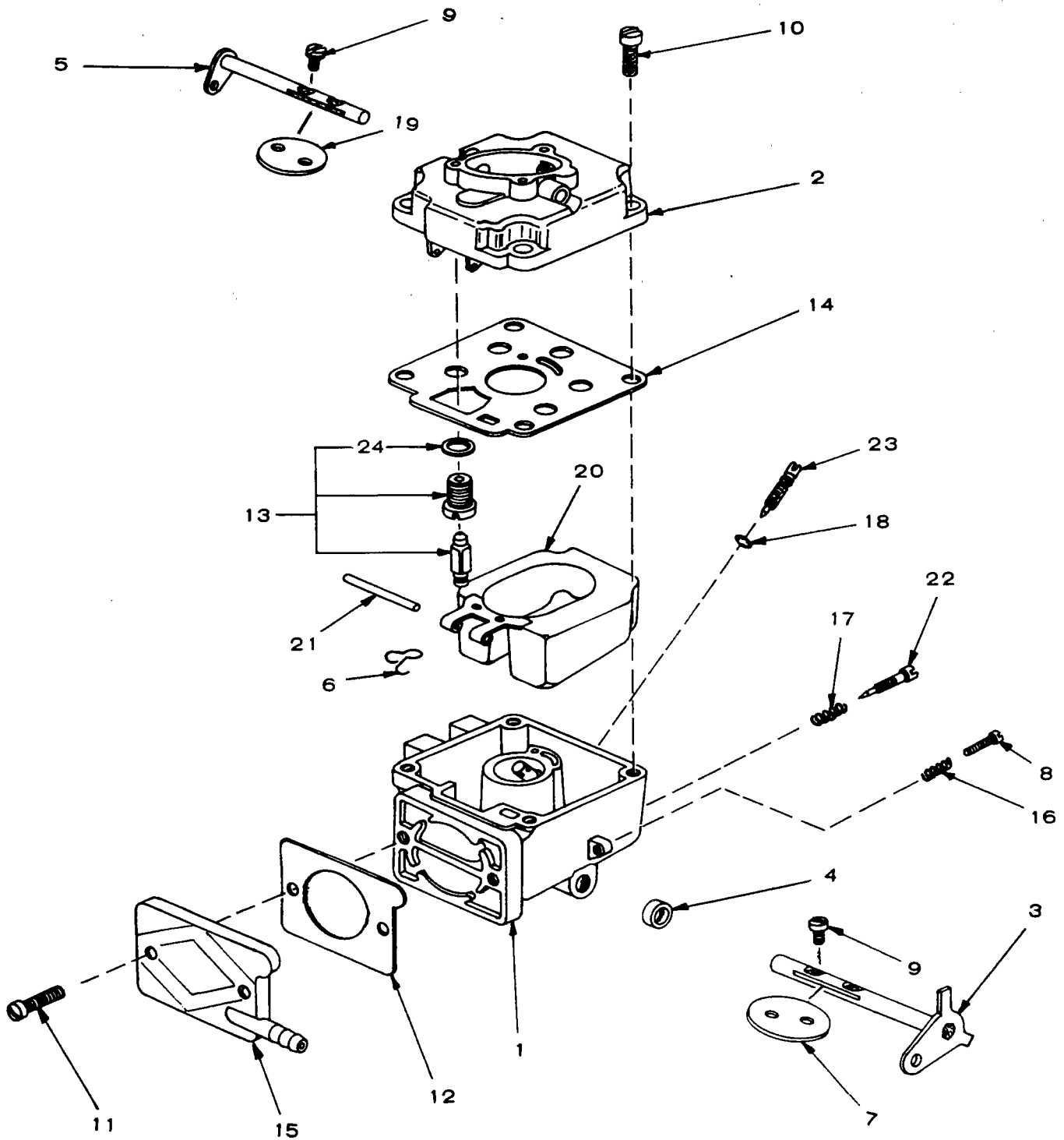


FUEL SYSTEM

REF. NO.	PART NO.	QTY. USED	PART DESCRIPTION	REF. NO.	PART NO.	QTY. USED	PART DESCRIPTION
1	140-1169	1	Tube, Air Intake	19	149-1321	1	Cap, Fuel Outlet
2	865-0020	1	Nut, Wing (1/4-20)	20	503-0664	1	Hose, Fuel - Pump to Carburetor
3	140-1168	1	Cover, Air Cleaner	21	503-0663	1	Hose, Vacuum - Pump to Gearcase Port
4	140-1218	1	Filter, Air - Polyurethane	22	503-0301	3	Clamp, Hose (7/16")
5	140-1216	1	Filter, Air - Paper	23	809-0045	2	Screw, Round Head (#10 x 5/8")
6	800-0003	1	Screw, Hex Head (1/4-20 x 1/2")	24	149-1322	1	*Pump, Fuel - Vacuum, Pulse
7	853-0013	1	Washer, Lock - Spring (1/4)	25	505-0755	2	Nipple, Pipe (1 x 3") - Exhaust
8	862-0001	1	Nut, Hex (1/4-20)	26	800-0034	4	Screw, Hex Head (5/16-18 x 2-1/4") Begin Spec D
9	140-1198	1	Support, Air Cleaner	27	850-0045	4	Washer, Lock - Spring (5/16)
10	815-0377	3	Screw, Round Head (10-32 x 3/8")	28	862-0015	4	Nut, Hex (5/16-18) Spec A through C
11	518-0328	2	Clip, Cable	29	520-0758	4	Stud (5/16-18 x 2-1/2") Spec A through C
12	140-1213	1	Housing, Air Cleaner	30	154-1446	2	Gasket - Manifold to Cylinder Block
13	140-1215	1	Gasket - Air Cleaner to Carburetor	31	154-1468	1	Manifold, Intake
14	123-1176	1	Tube - Crankcase Breather				
15	800-0023	2	Screw, Hex Head (1/4-20 x 1-3/8")				
16	850-0040	2	Washer, Lock - Spring (1/4)				
17	145-0438	1	Gasket - Carburetor to Manifold				
18	*CARBURETOR, COMPLETE (Includes Mounting Gasket)						
	142-0587	1	Begin Spec F				
	142-0558	1	Spec A through E (For Replacement order 142-0587)				

* - See Separate Group for Components

CARBURETOR PARTS

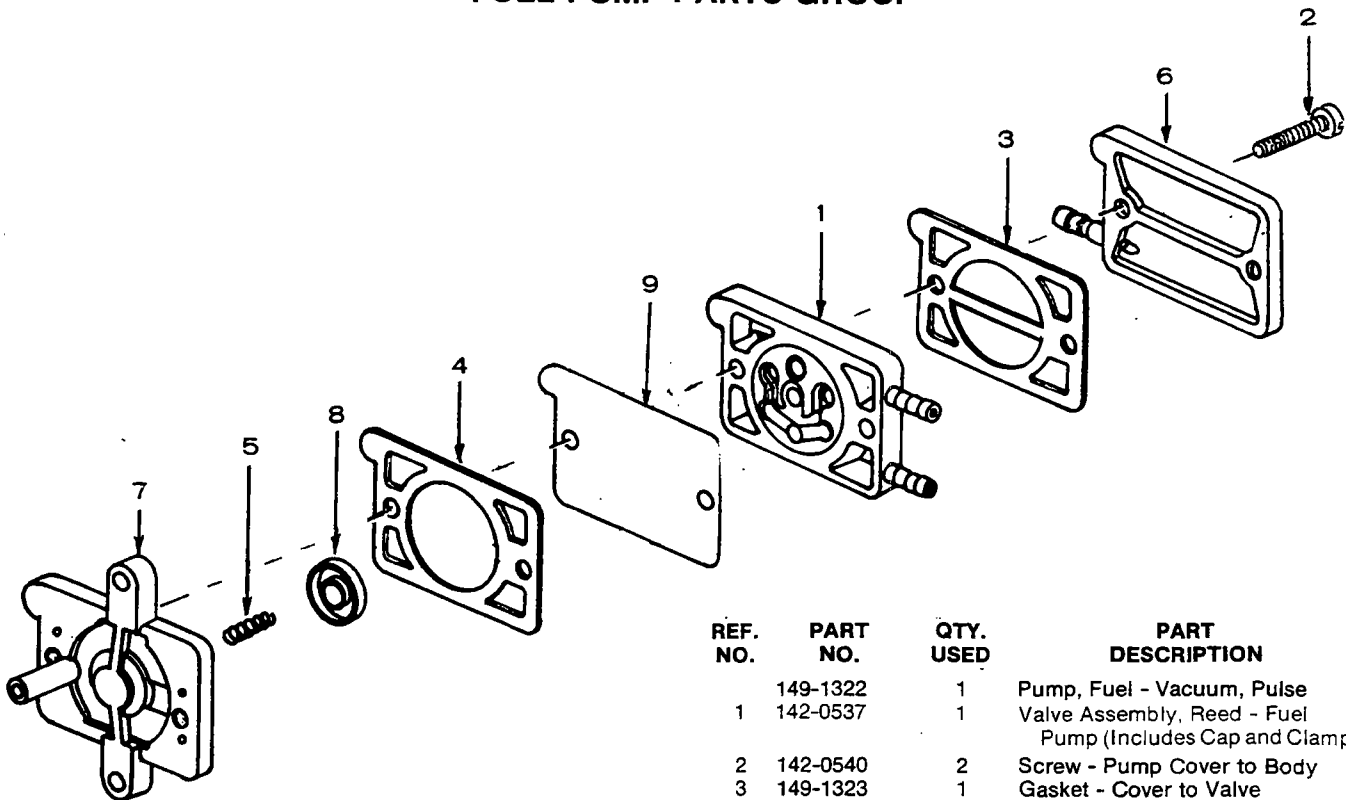


CARBURETOR PARTS

REF. NO.	PART NO.	QTY. USED	PART DESCRIPTION	REF. NO.	PART NO.	QTY. USED	PART DESCRIPTION
	CARBURETOR, COMPLETE (Includes Mounting Gasket)			8	142-0064	1	Screw, Throttle Stop
	142-0587	1	Begin Spec F	9	142-0334	4	†Screw, Fly to Shaft
	142-0558	1	Spec A through E (For Replacement Order 142-0587)	10	142-0539	4	Screw, Upper to Lower Body
	KIT, REPAIR (Includes Parts Marked †)			11	142-0539	2	Screw, Inlet Plate
	142-0592	1	Begin Spec F	12	142-0559	1	*Gasket, Inlet Plate
	142-0561	1	Spec A through E	13	142-0553	1	†Valve Assembly, Float
	†KIT, GASKET (Includes Parts Marked *)			14	*GASKET, CARBURETOR BODY		
	142-0591	1	Begin Spec F		142-0572	1	Begin Spec F
	142-0560	1	Spec A through E		142-0543	1	Spec A through E
1		1	Body Lower (Not Sold Separately)	15	149-1326	1	Plate, Inlet
2	BODY, UPPER			16	142-0544	1	Spring, Throttle Stop
	142-0573	1	Begin Spec F	17	142-0282	1	†Spring, Idle Needle
	142-0533	1	Spec A through E	18	142-0550	1	*O-Ring, Packing - Power Needle
3	142-0534	1	†Shaft, Throttle	19	142-0546	1	Fly, Choke
4	142-0535	1	*O-Ring, Packing - Throttle Shaft	20	142-0547	1	Float Assembly
5	142-0536	1	Shaft, Choke	21	142-0548	1	†Shaft, Float
6	142-0554	1	Clip, Retaining - Float Valve	22	142-0016	1	†Needle, Idle
7	FLY, THROTTLE			23	142-0549	1	Needle Assembly, Power
	142-0584	1	Begin Spec F	24	142-0523	1	*Gasket, Float Valve Seat
	142-0538	1	Spec A through E				

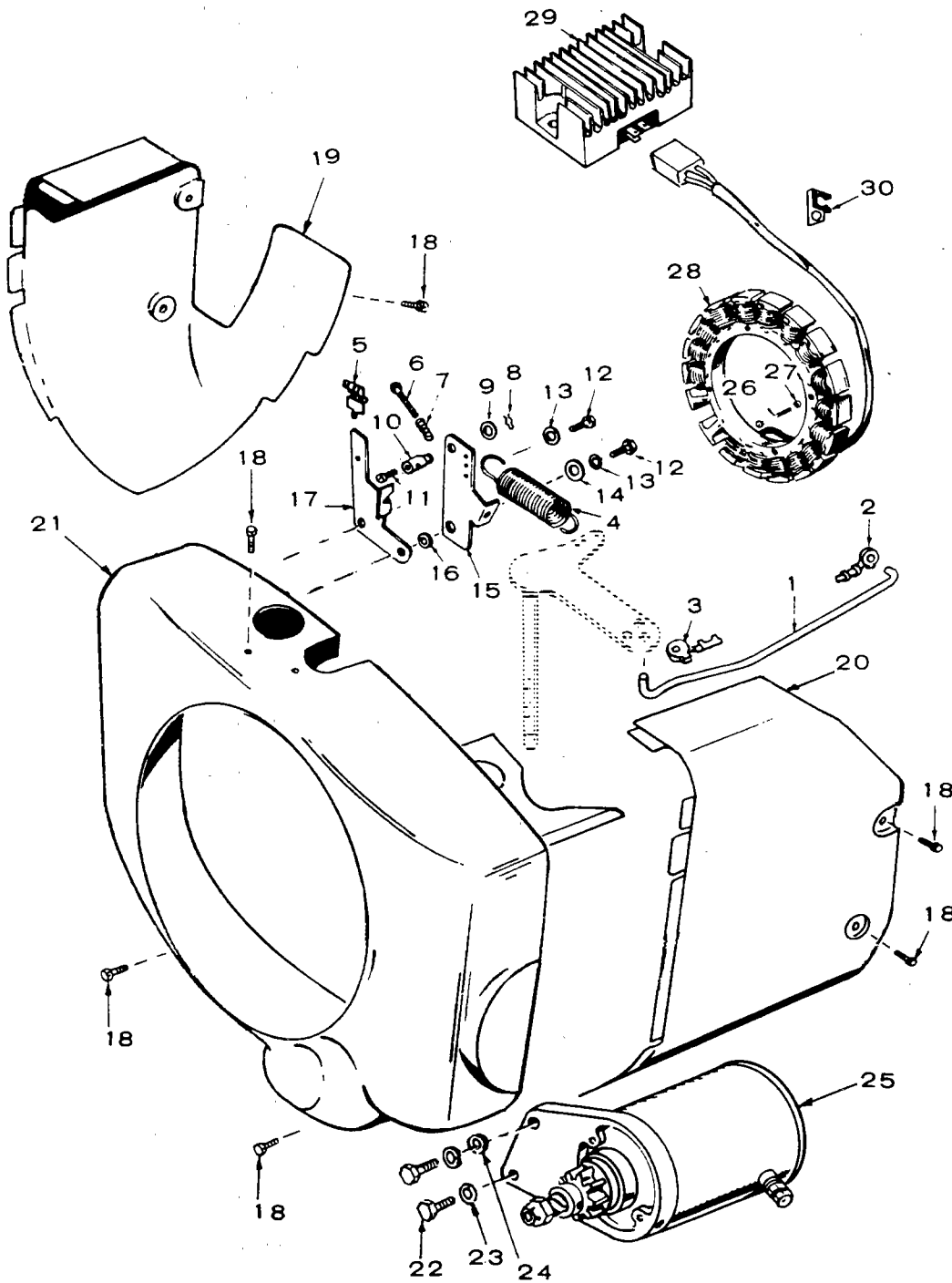
† - Included in Repair Kit
* - Included in Gasket Kit

FUEL PUMP PARTS GROUP



REF. NO.	PART NO.	QTY. USED	PART DESCRIPTION
	149-1322	1	Pump, Fuel - Vacuum, Pulse
1	142-0537	1	Valve Assembly, Reed - Fuel Pump (Includes Cap and Clamp)
2	142-0540	2	Screw - Pump Cover to Body
3	149-1323	1	Gasket - Cover to Valve Assembly
4	142-0541	1	Gasket - Pump Cover
5	142-0545	1	Spring - Fuel Pump
6	149-1326	1	Cover, Pump
7	149-1324	1	Base, Pump
8	142-0552	1	Plate, Drive - Fuel Pump
9	142-0555	1	Diaphragm - Fuel Pump

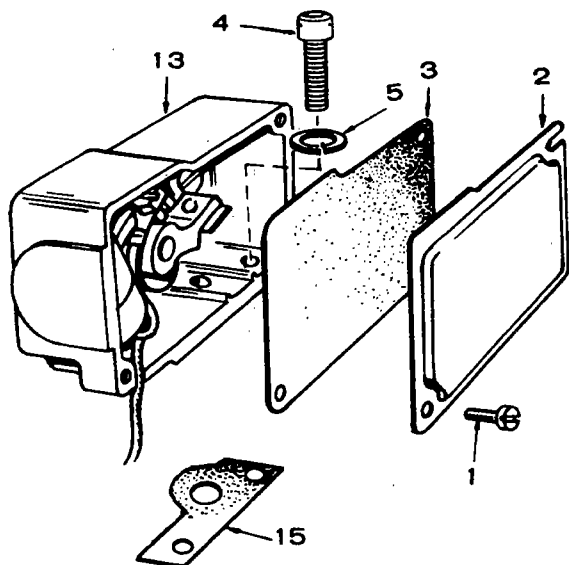
ALTERNATOR, AIR HOUSING, GOVERNOR AND STARTER



ALTERNATOR, AIR HOUSING, GOVERNOR AND STARTER

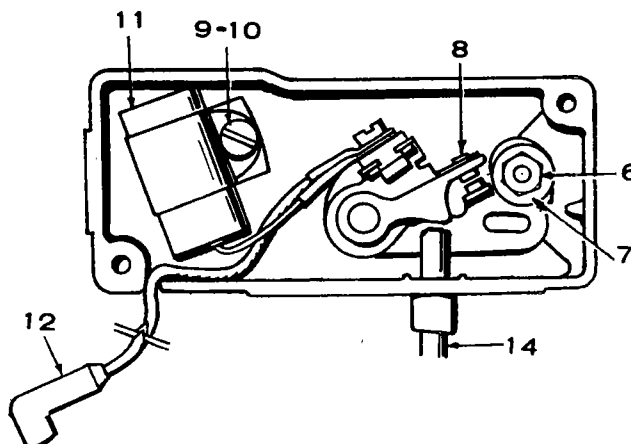
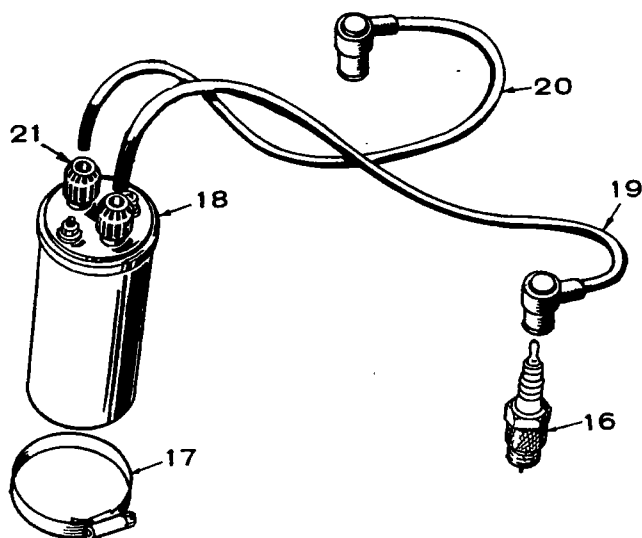
REF. NO.	PART NO.	QTY. USED	PART DESCRIPTION	REF. NO.	PART NO.	QTY. USED	PART DESCRIPTION
1	150-1350	1	Rod, Control - Governor	19	134-2382	1	Housing, Cylinder Air - Left
2	518-0004	1	Clip, Retaining - Control Rod	20	134-2383	1	Housing, Cylinder Air - Right
3	870-0278	1	Clip, Retaining - Control Rod	21	134-2393	1	Housing, Blower
4	150-1214	1	Spring, Governor	22	800-0028	2	Screw, Hex Head (5/16-18 x 1")
5	518-0176	1	Clip, Cable - Throttle	23	850-0045	2	Washer, Lock - Spring (5/16)
6	812-0068	1	Screw, Round Head (6-32 x 1")	24	526-0113	1	Washer, Flat (5/16)
7	150-1398	1	Spring, Throttle Screw	25	MOTOR, STARTER (See Separate Group for Components)		
8	516-0059	1	Pin, Cotter	191-0933	1	Begin Spec B	
9	526-0006	1	Washer, Flat (#4)	191-0883	1	Spec A (For Replacement Order 191-0933)	
10	152-0155	1	Swivel, Cable - Throttle	26	813-0108	3	Screw, Round Head (10-32 x 1-1/2")
11	815-0104	1	Screw, Round Head (8-32 x 5/16")	27	850-0030	3	Washer, Lock - Spring (#10)
12	821-0010	2	Screw, Hex Head (1/4-20 x 1/2")	28	191-0885	1	Stator, Alternator (Plugs into Regulator)
13	850-0040	2	Washer, Lock - Spring (1/4)	29	191-0886	1	Regulator, Voltage
14	526-0214	1	Washer, Flat (1/4)	30	167-0218	1	Support, Stator Lead
15	150-1345	1	Arm, Governor Control				
16	150-1269	1	Bushing, Governor Control				
17	150-1343	1	Bracket, Governor Control				
18	815-0261	7	Screw, Hex Head (1/4-20 x 7/16")				

IGNITION SYSTEM

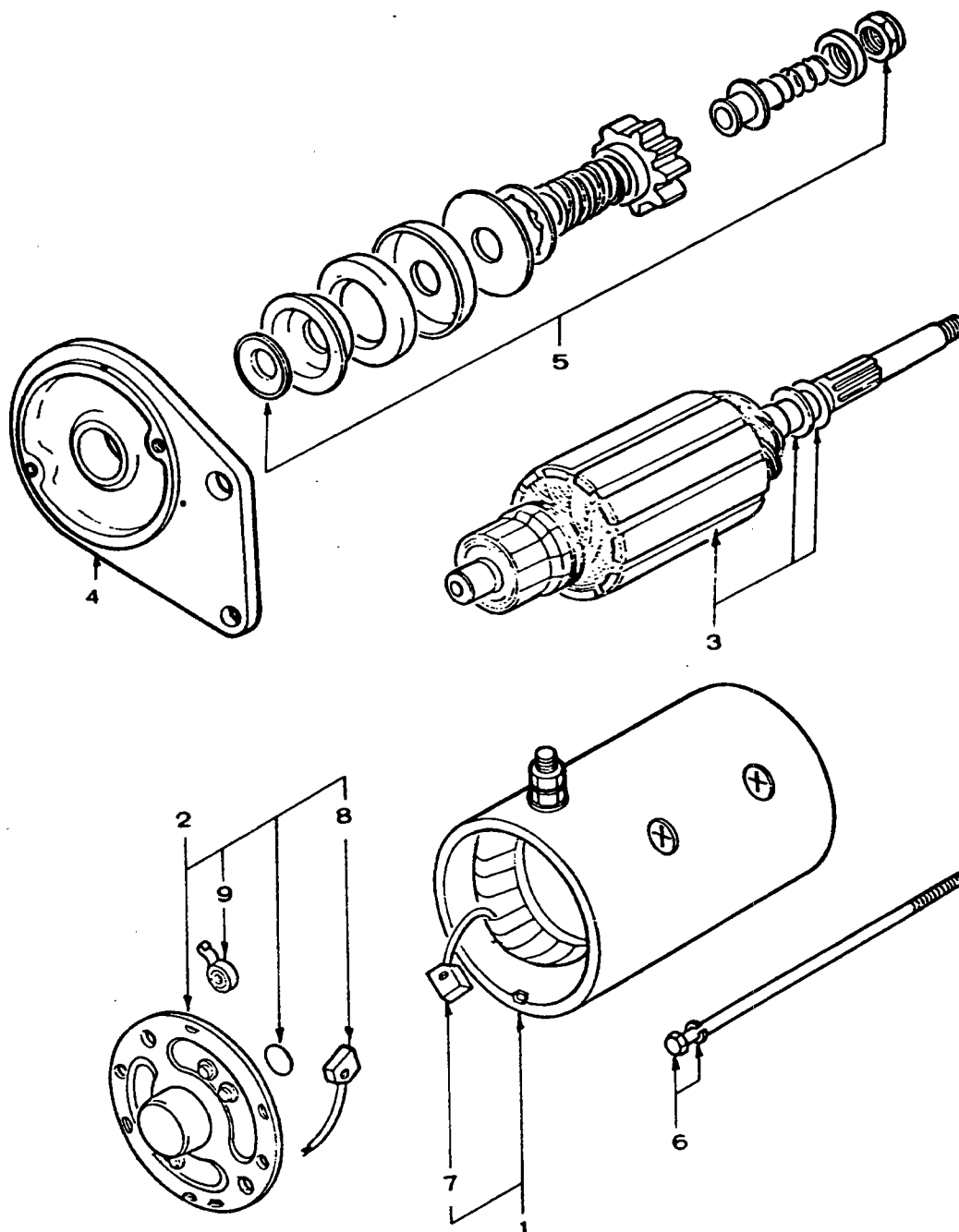


REF. NO.	PART NO.	QTY. USED	PART DESCRIPTION
	160-1161	1	Kit, Ignition Tune-Up (Includes Point Set and Condenser)
1	815-0358	2	*Screw, Pan Head (8-32 x 5/16")
2	160-1149	1	*Cover, Breaker Box
3	160-1148	1	*Gasket, Breaker Box
4	802-0034	2	*Screw, Socket Head (1/4-20 x 3/4")
5	850-0038	2	*Washer, Lock - Spring (1/4)
6	870-0221	1	*Nut, Hex (8-32)
7	815-0405	1	*Screw, Pan Head (8-32 x 1/2")
8	160-1154	1	*Point Set, Breaker
9	815-0403	1	*Screw, Pan Head (8-32 x 5/16")
10	850-0025	1	*Washer, Lock - Spring #8
11	312-0069	1	*Condenser
12	336-2132	1	Lead, Electrical
13	160-1158	1	Box Assembly, Breaker (Includes Parts Marked *)
14	160-1151	1	Plunger
15	160-1150	1	*Gasket, Mounting
16	PLUG, SPARK		
	167-0237	2	Resistor Type
	167-0241	2	Non-Resistor Type
17	503-0311	1	Clamp, Loop
18	166-0535	1	Coil, Ignition
	CABLE, SPARK PLUG		
			Resistor Type
19	167-1595	1	Spec A through F (27")
20	167-1596	1	Spec A through F (16")
			Non-Resistor Type
19	167-1593	1	Spec A through E (24")
20	167-1594	1	Spec A through E (16-3/4")
21	166-0604	2	Nut, Coil (Part of 166-0535 Coil)

* - Included in Breaker Box Assembly

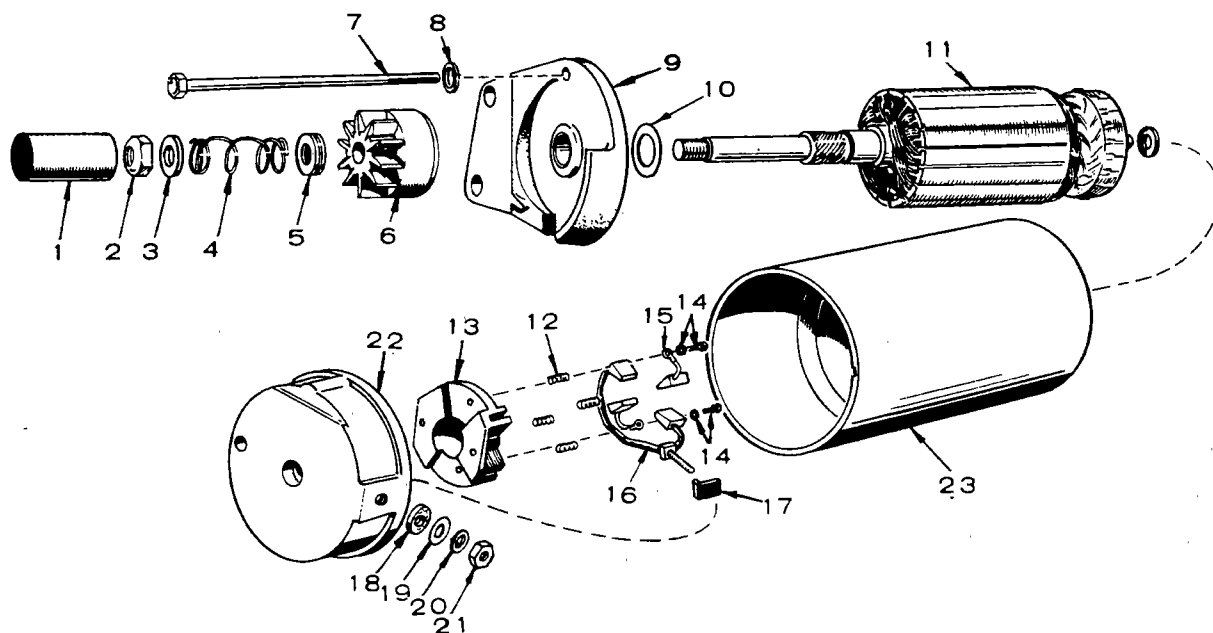


STARTER PARTS - SPEC A



REF. NO.	PART NO.	QTY. USED	PART DESCRIPTION
	191-0883	1	Motor, Starter (For Replacement Order #191-0933)
1	191-0906	1	Housing, Starter
2	191-0907	1	End Cap Assembly
3	191-0908	1	Armature, Starter
4	191-0909	1	Drive Plate Assembly
5	191-0910	1	Drive Gear Assembly
6	191-0911	2	Bolt, Through
7	191-0912	1	Brush, Field
8	191-0913	1	Brush, Ground
9	191-0917	2	Spring, Brush

S AFTER PARTS - BEGIN SPEC B



REF. NO.	PART NO.	QTY. USED	PART DESCRIPTION	REF. NO.	PART NO.	QTY. USED	PART DESCRIPTION
	191-0933	1	Starter	16	£	1	*†Stud and Brush Assembly
1	191-1034	1	Cover, Dust	17	£	2	†Insulator - Stud
2	191-1045	1	Nut	18	£	1	†Washer, Insulating - Stud
3	191-1046	1	Washer, Flat	19	£	1	†Washer, Flat
4	191-1035	1	Spring, Anti-drift	20	£	1	†Washer, Lock
5	191-1047	1	Spacer, Dust Cover	21	£	1	†Nut, Hex
6	191-1036	1	Drive Gear Assembly	22	191-1040	1	End Cap Assembly (Includes Parts Marked †)
7	191-1048	2	Screw, Hex Head	23	£	1	Housing, Starter
8	850-0040	2	Washer, Lock - Spring (1/4)		191-1041	1	Repair Kit (Includes Parts Marked *)
9	191-1037	1	Drive Plate Assembly				
10	191-1038	1	Washer, Thrust				
11	191-1039	1	Armature, Starter				
12	£	4	*†Spring, Brush				
13	£	1	†Brush Holder				
14	£	2	†Screw and Lockwasher				
15	£	2	*†Brush, Ground				

£ - Not Sold Separately - Order Applicable Assembly or Kit.
† - Included in the 191-1040 End Cap Assembly.
* - Included in the 191-1041 Repair Kit.

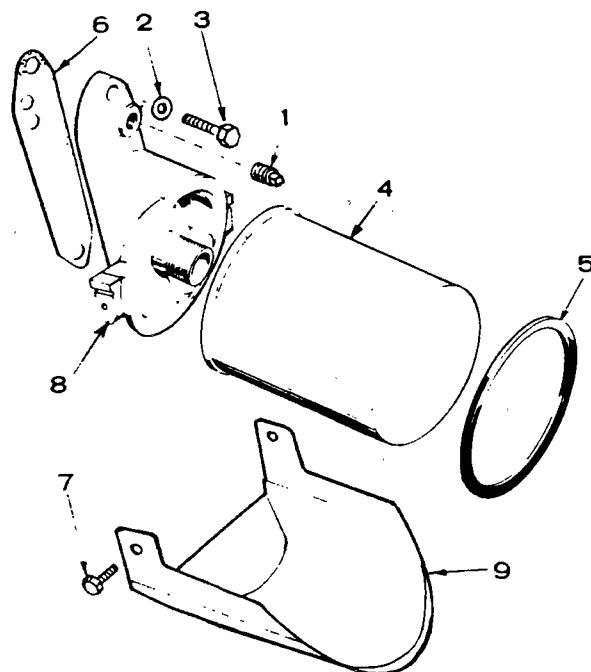
SERVICE KITS AND MISCELLANEOUS

PART NO.	QTY. USED	PART DESCRIPTION
168-0123	1	Gasket Kit, Carbon Removal
168-0124	1	Gasket Kit, Engine
522-0266	1	Overhaul Kit

OPTIONAL EQUIPMENT PARTS SECTION

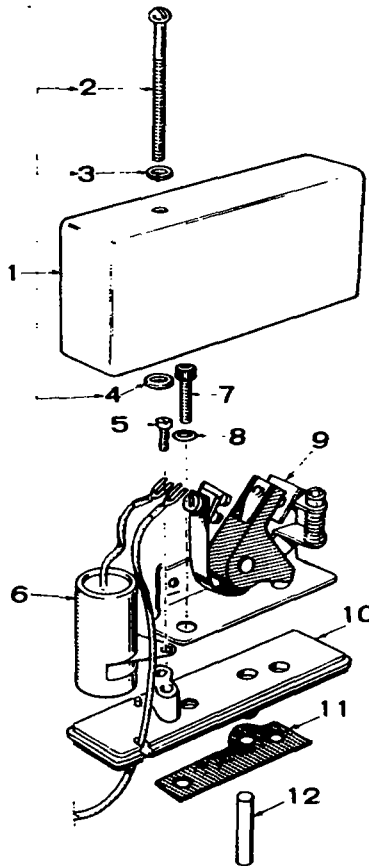
This section contains illustrated parts listing of factory installed options for these Industrial Engines. Options may not be applicable to all models; for field conversions additional parts are usually required. Optional parts listed in this section are in addition or in place of those shown in the standard engine parts section.

OPTIONAL GROUP NUMBER 1 SPIN-ON OIL FILTER



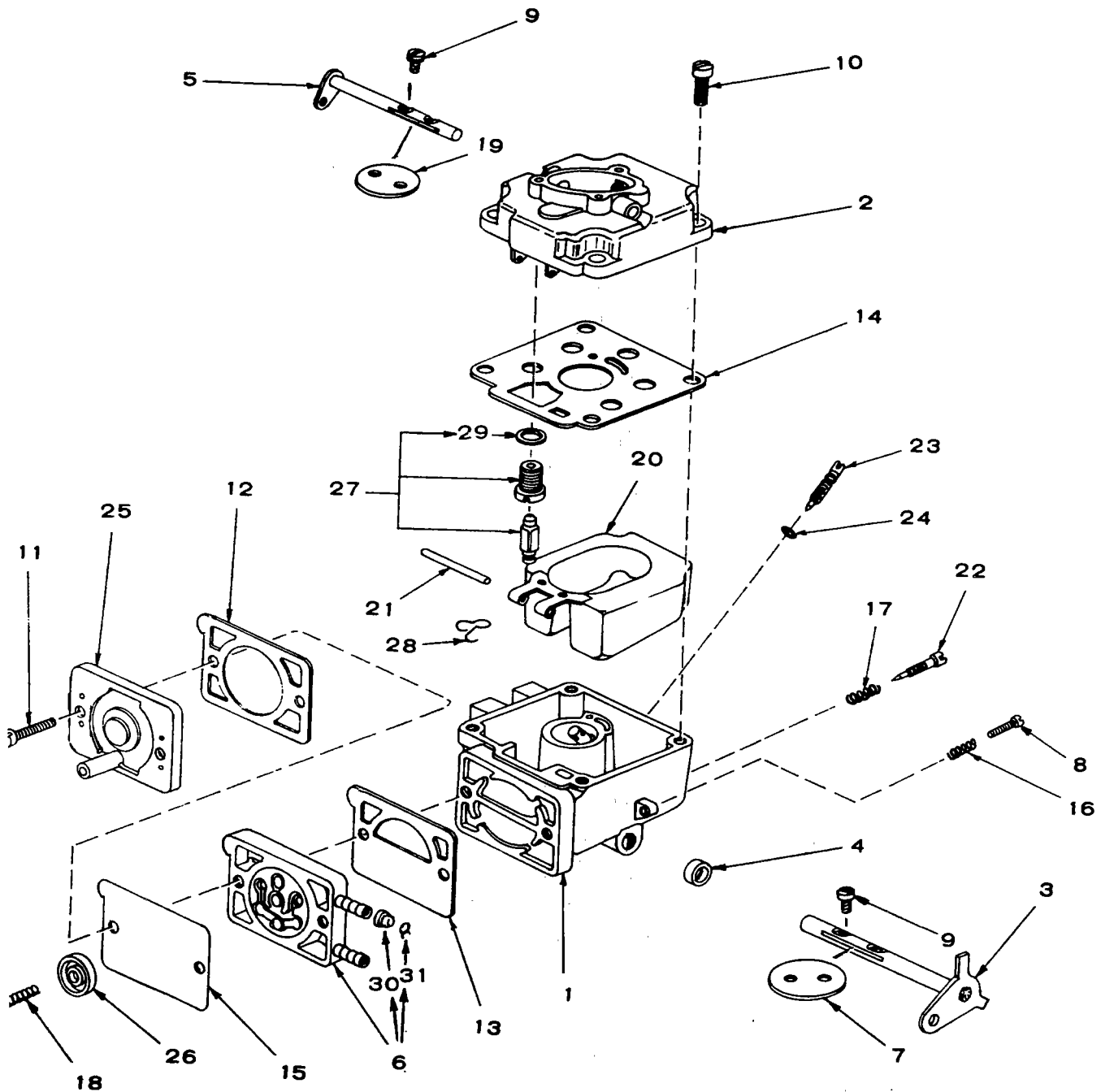
REF. NO.	PART NO.	QTY. USED	PART DESCRIPTION
1	502-0080	1	Plug, Adapter (1/8")
2	526-0065	2	Washer, Flat - Copper (5/16")
3	800-0028	2	Screw, Hex Head (5/16 x 1")
4	122-0338	1	Filter, Oil
5	122-0347	1	Seal, Air
6	122-0321	1	Gasket, Filter Adapter
7	815-0194	2	Screw, Hex Head W/ET Lockwasher (10-32 x 3/8")
8	122-0320	1	Adapter, Oil Filter
9	122-0360	1	Drain, Oil Filter

OPTIONAL GROUP NUMBER 2 TOP ADJUSTED BREAKER BOX



REF. NO.	PART NO.	QTY. USED	PART DESCRIPTION
	160-1210	1	Box Assembly, Breaker - Complete (Includes Mounting Gasket)
	160-1213	1	Kit, Ignition Tune-Up (Includes Point Set and Condenser)
1	160-1232	1	Cover Assembly (Includes parts marked *)
2	812-0108	1	*Screw, Machine - Round Head (10-24 x 1-1/2")
3	526-0008	1	*Washer, Flat (7/16")
4	509-0065	1	*"O" Ring
5	815-0358	1	Screw, Slotted - Hex Head (8-32 x 5/16")
6	312-0196	1	Condenser (30 Mfd)
7	802-0034	2	Screw, Cap - Socket Head (1/4 x 20 x 3/4")
8	850-0038	2	Washer, Lock - Spring (1/4")
9	160-1183	1	Point Assembly, Breaker
10	160-1219	1	Base, Breaker Box
11	160-1150	1	Gasket, Mounting
12	160-1151	1	Plunger

OPTIONAL GROUP NUMBER 3 **CARBURETOR WITH INTEGRAL FUEL PUMP**



OPTIONAL GROUP NUMBER 3 **CARBURETOR WITH INTEGRAL FUEL PUMP**

REF. NO.	PART NO.	QTY. USED	PART DESCRIPTION
	CARBURETOR, COMPLETE (Includes Integral Fuel Pump and Mounting Gasket)		
	142-0585	1	Begin Spec F
	142-0531	1	Spec A through E
	KIT, REPAIR (Includes Parts Marked †)		
	142-0570	1	Begin Spec F
	142-0557	1	Spec A through E
	†KIT, GASKET (Includes Parts Marked *)		
	142-0571	1	Begin Spec F
	142-0556	1	Spec A through E
1		1	Body, Lower (Not Sold Separately)
2	BODY, UPPER		
	142-0573	1	Begin Spec F
	142-0533	1	Spec A through E
3	142-0534	1	†Shaft, Throttle
4	142-0535	1	*O-Ring, Packing - Throttle Shaft
5	142-0536	1	Shaft, Choke
6	142-0537	1	†Valve Assembly, Reed - Fuel Pump (Includes Parts Marked #)
7	FLY, THROTTLE		
	142-0584	1	Begin Spec F
	142-0538	1	Spec A through E
8	142-0064	1	Screw, Throttle Stop
9	142-0334	4	†Screw, Fly to Shaft
10	142-0539	4	Screw, Upper to Lower Body
11	142-0540	2	Screw, Pump Cover to Body
12	142-0541	1	*Gasket, Pump Cover
13	142-0542	1	*Gasket, Inlet Plate

REF. NO.	PART NO.	QTY. USED	PART DESCRIPTION
14	*GASKET, CARBURETOR BODY		
	142-0572	1	Begin Spec F
	142-0543	1	Spec A through E
15	142-0555	1	*Diaphragm, Fuel Pump
16	142-0544	1	Spring, Throttle Stop
17	142-0282	1	†Spring, Idle Needle
18	142-0545	1	†Spring, Fuel Pump
19	142-0546	1	Fly, Choke
20	142-0547	1	Float Assembly
21	142-0548	1	†Shaft, Float
22	142-0016	1	†Needle, Idle
23	142-0549	1	Needle, Power
24	142-0550	1	*O-Ring, Packing - Power Needle
25	142-0551	1	Cover, Pump
26	142-0552	1	†Plate, Drive - Fuel Pump
27	142-0553	1	†Valve Assembly, Float
28	142-0554	1	Clip, Retaining - Float Valve
29	142-0523	1	*Gasket, Float Valve Seat
30	149-1321	1	#Cap, Fuel Outlet
31	503-0301	1	#Clamp, Hose (7/16")

† - Included in Repair Kit
 * - Included in Gasket Kit

<http://stores.ebay.com/UsefulCDs>

SPECIAL PARTS LIST FOR **MODEL** BF-MS **SPEC** 2270A
 FOR STANDARD PARTS REFER TO **CATALOG** 965-0250 **KEY NO.** -
OPTIONAL GROUPS IN CATALOG ARE LISTED BY GROUP NO. BELOW WHEN USED.

PART NO.	QTY.	DESCRIPTION	PART NO.	QTY.	DESCRIPTION
Group - 3		Carburetor With Fuel Pump			
110-1942	1	Block Assembly, Cylinder			
101-0436	1	Plate, Bearing			
104-0762	1	Crankshaft			
104-0783	1	Deflector, Crankshaft Oil			
105-0376	1	Camshaft (Includes CTR Pin)			
113-0188	2	Ring Set, Piston			
114-0224	2	Rod, Connecting (Includes Bolts, Nuts and Washers)			
102-0694	1	Base, Oil			
505-0056	1	Plug, Drain			
103-0011	1	Gasket, Gearcase			
503-0365	1	Clamp, Ignition Coil			
140-1159	1	Gasket-Air Cleaner to Carb.			
140-1214	1	Housing, Air Cleaner			
140-1055	1	Filter, Air-Paper			
503-0644	1	Hose, Vacuum-Pump to Crank-case Port			
149-1308	1	Spring, Vacuum Hose Support			
153-0449	1	Bracket, Choke Cable			
167-0188	1	Support, Stator Lead			
123-1179	1	Tube, Oil Fill			
123-1162	1	Cap And Indicator, Oil Fill			
123-0191	1	Gasket, Cap and Indicator - Oil Fill			
142-0495	1	Carburetor With Integral Fuel Pump (No Repair Kit Or Gasket Kit Available)			
142-0496	1	Body, Upper-Carburetor			
149-0499	1	Valve Assembly, Reed-Fuel Pump			
142-0504	1	Gasket, Inlet Plate-Fuel Pump			
142-0506	1	Gasket, Carburetor Body			
142-0529	1	Cover Assembly, Fuel Pump (Includes Plunger Spring, O-Ring Retainer, E-Ring Plunger Retainer, Cover Plunger Button, O-Ring And Plunger Pin)			

<http://stores.ebay.com/UsefulCDs>

Dated Nov. 1, 1977

Revised _____

Page 1 of 1

SPECIAL PARTS LIST FOR **MODEL** BF-MS **SPEC** 2270C
 FOR STANDARD PARTS REFER TO **CATALOG** 965-0250 **KEY NO.** -
 OPTIONAL GROUPS IN CATALOG ARE LISTED BY GROUP NO. BELOW WHEN USED.

PART NO.	QTY.	DESCRIPTION	PART NO.	QTY.	DESCRIPTION
Group - 3		Carburetor With Fuel Pump			
110-1942	1	Block Assembly, Cylinder			
101-0436	1	Plate, Bearing			
104-0762	1	Crankshaft			
104-0783	1	Deflector, Crankshaft Oil			
113-0183	2	Ring Set, Piston			
114-0224	2	Rod, Connecting (Includes Bolts, Nuts and Washers)			
102-0724	1	Base, Oil - Includes Plug			
167-0188	1	Support, Stator Lead			
140-1055	1	Filter, Air-Paper			
518-0328	1	Clip, Cable			
503-0644	1	Hose, Vacuum-Pump to Crank-case Port			
149-1308	1	Spring, Vacuum Hose Support			

SPECIAL PARTS LIST FOR **MODEL** BF-MS **SPEC** 2271A
FOR STANDARD PARTS REFER TO **CATALOG** 965-0250 **KEY NO.** -
OPTIONAL GROUPS IN CATALOG ARE LISTED BY GROUP NO. BELOW WHEN USED.

PART NO.	QTY.	DESCRIPTION	PART NO.	QTY.	DESCRIPTION
Group - 1		Spin-On Oil Filter			
102-0724	1	Base, Oil - Includes Plug			
167-0188	1	Support, Stator Lead			
134-2605	1	Housing, Blower			
120-0709	1	Cup, Oil Pump Intake			
140-1055	1	Filter, Air-Paper			
503-0644	1	Hose, Vacuum-Pump To Crank- case Port			
149-1308	1	Spring, Vacuum Hose Support			
134-2386	1	Housing, Cylinder Air - RH			

<http://stores.ebay.com/UsefulCDs>

SPECIAL PARTS LIST FOR MODEL BF-MS SPEC 2271E
 FOR STANDARD PARTS REFER TO CATALOG 965-0250 KEY NO. -
 OPTIONAL GROUPS IN CATALOG ARE LISTED BY GROUP NO. BELOW WHEN USED.

PART NO.	QTY.	DESCRIPTION	PART NO.	QTY.	DESCRIPTION
Group - 1		Spin-On Oil Filter			
Group - 3		Carburetor With Fuel Pump			
110-1943	1	Block Assembly, Cylinder			
102-0724	1	Base, Oil - Includes Plug			
134-2605	1	Housing, Blower			
142-0585	1	Carburetor - With Integral Fuel Pump			
140-1055	1	Filter, Air-Paper			
503-0740	1	Hose, Vacuum - Pump To Crankcase Port			
134-2386	1	Housing, Cylinder Air - RH			

<http://stores.ebay.com/UsefulCDs>

SPECIAL PARTS LIST FOR **MODEL** BF-MS **SPEC** 2290A
 FOR STANDARD PARTS REFER TO **CATALOG** 965-0250 **KEY NO.** -
 OPTIONAL GROUPS IN CATALOG ARE LISTED BY GROUP NO. BELOW WHEN USED.

PART NO.	QTY.	DESCRIPTION	PART NO.	QTY.	DESCRIPTION
Group - 3		Carburetor With Fuel Pump			
101-0436	1	Plate, Bearing			
110-1942	1	Block Assembly, Cylinder			
104-0795	1	Crankshaft			
104-0783	1	Deflector, Crankshaft Oil			
105-0376	1	Camshaft - Includes Pin			
113-0188	2	Ring Set, Piston			
114-0224	2	Rod, Connecting (Includes Bolts, Nuts and Washers)			
102-0694	1	Base, Oil			
505-0056	1	Plug, Drain			
123-1179	1	Tube, Oil Fill			
123-1162	1	Cap and Indicator, Oil Fill			
123-0191	1	Gasket, Cap and Indicator - Oil Fill			
103-0011	1	Gasket, Gearcase			
167-0188	1	Support, Stator Lead			
503-0365	1	Clamp, Ignition Coil			
140-1159	1	Gasket-Air Cleaner to Carb.			
140-1214	1	Housing, Air Cleaner			
140-1055	1	Filter, Air-Paper			
503-0644	1	Hose, Vacuum-Pump to Crank-case Port			
149-1308	1	Spring, Vacuum Hose Support			
153-0449	1	Bracket, Choke Cable			
515-0146	1	Key, Stub Shaft			
142-0495	1	Carburetor With Integral Fuel Pump (No Repair Kit or Gasket Kit Available)			
142-0496	1	Body, Upper - Carburetor			
142-0499	1	Valve Assembly, Reed - Fuel Pump			
142-0504	1	Gasket, Inlet Plate - Fuel Pump			
142-0506	1	Gasket, Carburetor Body			
142-0529	1	Cover Assembly, Fuel Pump (Includes Plunger Spring, O-Ring Retainer, E-Ring Plunger Retainer, Cover, Plunger Button, O-Ring And Plunger Pin)			

<http://stores.ebay.com/UsefulCDs>

Dated Nov. 1, 1977

Revised _____

Page 1 of 1

SPECIAL PARTS LIST FOR **MODEL** BF-MS **SPEC** 2291A
 FOR STANDARD PARTS REFER TO **CATALOG** 965-0250 **KEY NO.**
 OPTIONAL GROUPS IN CATALOG ARE LISTED BY GROUP NO. BELOW WHEN USED.

PART NO.	QTY.	DESCRIPTION	PART NO.	QTY.	DESCRIPTION
Group - 1		Spin-On Oil Filter			
Group - 3		Carburetor With Fuel Pump			
104-0794	1	Crankshaft			
105-0376	1	Camshaft - Includes Pin			
120-0413	1	Cup, Oil Pump Intake			
102-0694	1	Base, Oil			
505-0056	1	Plug, Oil Drain			
103-0011	1	Gasket, Gearcase			
167-0188	1	Support, Stator Lead			
503-0365	1	Clamp, Ignition Coil			
140-1159	1	Gasket-Air Cleaner to Carb.			
140-1214	1	Housing, Air Cleaner			
140-1055	1	Filter, Air-Paper			
503-0644	1	Hose, Vacuum-Pump to Crank- case Port			
149-1308	1	Spring, Vacuum Hose Support			
153-0449	1	Bracket, Choke Cable			
134-2453	1	Housing, Cylinder Air-RH			
515-0146	1	Key, Stub Shaft			
110-2356	1	Block Assembly, Cylinder			
123-1179	1	Tube, Oil Fill			
123-1162	1	Cap and Indicator, Oil Fill			
142-0495	1	Carburetor With Integral Fuel Pump (No Repair Kit or Gasket Kit Available)			
142-0496	1	Body, Upper - Carburetor			
142-0499	1	Valve Assembly, Reed - Fuel Pump			
142-0504	1	Gasket, Inlet Plate - Fuel Pump			
142-0506	1	Gasket, Carburetor Body			
142-0529	1	Cover Assembly, Fuel Pump (Includes Plunger Spring, O- Ring Retainer, E-Ring Plunger Retainer, Cover, Plunger Button, O-Ring And Plunger Pin)			

SPECIAL PARTS LIST FOR **MODEL** BF-MS **SPEC** 2379A
FOR STANDARD PARTS REFER TO **CATALOG** 965-0250 **KEY NO.** -
OPTIONAL GROUPS IN CATALOG ARE LISTED BY GROUP NO. BELOW WHEN USED.

PART NO.	QTY.	DESCRIPTION	PART NO.	QTY.	DESCRIPTION
Group - 3		Carburetor With Fuel Pump			
520-0820	1	Stud, Wet Hole			
120-0709	1	Cup, Oil Pump Intake			
167-0188	1	Support, Stator Lead			
102-0741	1	Base, Oil			
505-0158	1	Cap, Oil Drain			
505-0176	1	Nipple, Oil Drain			
505-0056	1	Plug, Oil Drain			
140-1259	1	Filter, Air-Polyurethane			
503-0644	1	Hose, Vacuum-Pump to Crank- case Port			
149-1308	1	Spring, Vacuum Hose Support			
134-2606	1	Guard, Flywheel			
403-1021	2	Bracket, Lifting			

Parts not furnished by Onan
Voltage Regulator

SPECIAL PARTS LIST FOR **MODEL** BF-MS **SPEC** 2379B
 FOR STANDARD PARTS REFER TO **CATALOG** 965-0250 **KEY NO.** -
 OPTIONAL GROUPS IN CATALOG ARE LISTED BY GROUP NO. BELOW WHEN USED.

PART NO.	QTY.	DESCRIPTION	PART NO.	QTY.	DESCRIPTION
Group - 3		Carburetor With Fuel Pump			
520-0820	1	Stud, Wet Hole			
120-0709	1	Cup, Oil Pump Intake			
102-0741	1	Base, Oil			
505-0158	1	Cap, Oil Drain			
505-0176	1	Nipple, Oil Drain			
505-0056	1	Plug, Oil Drain			
167-0188	1	Support, Stator Lead			
134-2606	1	Guard, Flywheel			
140-1259	1	Filter, Air-Polyurethane			
503-0644	1	Hose, Vacuum-Pump to Crank- case Port			
149-1308	1	Spring, Vacuum Hose Support			
403-1021	2	Bracket, Lifting			
Parts not furnished by Onan					
Stator Leads					
Voltage regulator					

<http://stores.ebay.com/UsefulCDs>

Dated Nov. 1, 1977

Revised _____

Page 1 of 1

SPECIAL PARTS LIST FOR **MODEL** BF-MS **SPEC** 2379C
 FOR STANDARD PARTS REFER TO **CATALOG** 965-0250 **KEY NO.** -
 OPTIONAL GROUPS IN CATALOG ARE LISTED BY GROUP NO. BELOW WHEN USED.

PART NO.	QTY.	DESCRIPTION	PART NO.	QTY.	DESCRIPTION
Group - 3		Carburetor With Fuel Pump			
520-0820	1	Stud, Wet Hole			
120-0709	1	Cup, Oil Pump Intake			
102-0741	1	Base, Oil			
505-0158	1	Cap, Oil Drain			
505-0176	1	Nipple, Oil Drain			
505-0056	1	Plug, Oil Drain			
167-0188	1	Support, Stator Lead			
134-2606	1	Guard, Flywheel			
140-1259	1	Filter, Air-Polyurethane			
503-0644	1	Hose, Vacuum-Pump To Crank- case Port			
149-1308	1	Spring, Vacuum Hose Support			
403-1021	2	Bracket, Lifting			

Parts not furnished by Onan
 Voltage Regulator

SPECIAL PARTS LIST FOR **MODEL** BF-MS **SPEC** 2425A
FOR STANDARD PARTS REFER TO **CATALOG** 965-0250 **KEY NO.** -
OPTIONAL GROUPS IN CATALOG ARE LISTED BY GROUP NO. BELOW WHEN USED.

PART NO.	QTY.	DESCRIPTION	PART NO.	QTY.	DESCRIPTION
----------	------	-------------	----------	------	-------------

120-0709	1	Cup, Oil Pump Intake			
191-0935	1	Stator, Alternator			
167-0188	1	Support, Stator Lead			
505-0086	2	Nipple, Half - Exhaust			

Parts not furnished by Onan
Voltage Regulator

SPECIAL PARTS LIST FOR **MODEL** BF-MS **SPEC** 2425B
 FOR STANDARD PARTS REFER TO **CATALOG** 965-0250 **KEY NO.** -
 OPTIONAL GROUPS IN CATALOG ARE LISTED BY GROUP NO. BELOW WHEN USED.

PART NO.	QTY.	DESCRIPTION	PART NO.	QTY.	DESCRIPTION
120-0709	1	Cup, Oil Pump Intake			
191-0935	1	Stator, Alternator			
167-0188	1	Support, Stator Lead			
332-0051	1	Clip, Wire-Top Blower Hsg.			
505-0086	2	Nipple, Half - Exhaust			
Parts not furnished by Onan Voltage Regulator					

<http://stores.ebay.com/UsefulCDs>

SPECIAL PARTS LIST FOR MODEL BF-MS SPEC 2425C
FOR STANDARD PARTS REFER TO CATALOG 965-0250 KEY NO. -
OPTIONAL GROUPS IN CATALOG ARE LISTED BY GROUP NO. BELOW WHEN USED.

PART NO.	QTY.	DESCRIPTION	PART NO.	QTY.	DESCRIPTION
191-0935	1	Stator, Alternator			
167-0188	1	Support, Stator Lead			
332-0051	1	Clip, Wire-Top Blower Hsg.			
505-0086	2	Nipple, Half - Exhaust			

Parts not furnished by Onan
Voltage Regulator

SPECIAL PARTS LIST FOR **MODEL** BF-MS **SPEC** 2434A
 FOR STANDARD PARTS REFER TO **CATALOG** 965-0250 **KEY NO.** -
 OPTIONAL GROUPS IN CATALOG ARE LISTED BY GROUP NO. BELOW WHEN USED.

PART NO.	QTY.	DESCRIPTION	PART NO.	QTY.	DESCRIPTION
Group - 3		Carburetor With Fuel Pump			
104-0897	1	Crankshaft			
120-0709	1	Cup, Oil Pump Intake			
102-0744	1	Base, Oil - Includes Plugs			
505-0056	1	Plug, Oil Base - Square Head			
505-0247	1	Plug, Oil Base - Socket Head			
191-0935	1	Stator, Alternator			
167-0188	1	Support, Stator Lead			
505-0775	2	Nipple, Half - Exhaust			
503-0644	1	Hose, Vacuum-Pump to Crank- case Port			
149-1308	1	Spring, Vacuum Hose Support			
Parts not furnished by Onan Voltage Regulator					

<http://stores.ebay.com/UsefulCDs>

Dated Nov. 1, 1977

Revised _____

Page 1 of 1

SPECIAL PARTS LIST FOR MODEL BF-MS SPEC 2434B
 FOR STANDARD PARTS REFER TO CATALOG 965-0250 KEY NO. -
 OPTIONAL GROUPS IN CATALOG ARE LISTED BY GROUP NO. BELOW WHEN USED.

PART NO.	QTY.	DESCRIPTION	PART NO.	QTY.	DESCRIPTION
Group - 3		Carburetor With Fuel Pump			
104-0897	1	Crankshaft			
120-0709	1	Cup, Oil Pump Intake			
102-0744	1	Base, Oil - Includes Plugs			
505-0056	1	Plug, Oil Base-Square Head			
505-0247	1	Plug, Oil Base-Socket Head			
191-0935	1	Stator, Alternator			
167-0188	1	Support, Stator Lead			
505-0775	2	Nipple, Half-Exhaust			
503-0644	1	Hose, Vacuum-Pump To Crank- case Port			
149-1308	1	Spring, Vacuum Hose Support			
Parts not furnished by Onan Voltage Regulator					

SPECIAL PARTS LIST FOR **MODEL** BF-MS **SPEC** 2434C
 FOR STANDARD PARTS REFER TO **CATALOG** 965-0250 **KEY NO.** -
 OPTIONAL GROUPS IN CATALOG ARE LISTED BY GROUP NO. BELOW WHEN USED.

PART NO.	QTY.	DESCRIPTION	PART NO.	QTY.	DESCRIPTION
Group - 3		Carburetor With Fuel Pump			
104-0897	1	Crankshaft			
120-0709	1	Cup, Oil Pump Intake			
102-0744	1	Base, Oil - Includes Plugs			
505-0056	1	Plug, Oil Base-Square Head			
505-0247	1	Plug, Oil Base-Socket Head			
191-0935	1	Stator, Alternator			
167-0188	1	Support, Stator Lead			
505-0775	2	Nipple, Half-Exhaust			
503-0644	1	Hose, Vacuum-Pump To Crank- case Port			
149-1308	1	Spring, Vacuum Hose Support			
Parts not furnished by Onan Voltage Regulator					

<http://stores.ebay.com/UsefulCDs>

Dated Nov. 1, 1977

Revised _____

Page 1 of 1

SPECIAL PARTS LIST FOR **MODEL** BF-MS **SPEC** 2449A
 FOR STANDARD PARTS REFER TO **CATALOG** 965-0250 **KEY NO.** -
 OPTIONAL GROUPS IN CATALOG ARE LISTED BY GROUP NO. BELOW WHEN USED.

PART NO.	QTY.	DESCRIPTION	PART NO.	QTY.	DESCRIPTION
Group - 1		Spin-On Oil Filter			
Group - 3		Carburetor With Fuel Pump			
120-0709	1	Cup, Oil Pump Intake			
167-0188	1	Support, Stator Lead			
134-2605	1	Housing, Blower			
140-1055	1	Filter, Air-Paper			
503-0644	1	Hose, Vacuum-Pump To Crank- case Port			
149-1308	1	Spring, Vacuum Hose Support			
134-2386	1	Housing, Cylinder Air - RH			
Parts not furnished by Onan					
Flywheel Guard					

<http://stores.ebay.com/UsefulCDs>

Dated Nov. 1, 1977

Revised _____

Page 1 of 1

SPECIAL PARTS LIST FOR **MODEL** BF-MS **SPEC** 2493A
 FOR STANDARD PARTS REFER TO **CATALOG** 965-0250 **KEY NO.** -
 OPTIONAL GROUPS IN CATALOG ARE LISTED BY GROUP NO. BELOW WHEN USED.

PART NO.	QTY.	DESCRIPTION	PART NO.	QTY.	DESCRIPTION
Group - 3		Carburetor With Fuel Pump			
520-0820	1	Stud, Wet Hole			
120-0709	1	Cup, Oil Pump Intake			
167-0188	1	Support, Stator Lead			
102-0741	1	Base, Oil			
505-0158	1	Cap, Oil Drain			
505-0176	1	Nipple, Oil Drain			
505-0056	1	Plug, Oil Drain			
503-0644	1	Hose, Vacuum-Pump to Crank case Port			
149-1308	1	Spring, Vacuum Hose Support			
134-2606	1	Guard, Flywheel			
403-1021	2	Bracket, Lifting			
Parts not furnished by Onan					
Voltage Regulator					

<http://stores.ebay.com/UsefulCDs>

Dated Nov. 1, 1977

Revised Nov. 1, 1977

Page 1 of 1

SPECIAL PARTS LIST FOR **MODEL** BF-MS **SPEC** 2493B
 FOR STANDARD PARTS REFER TO **CATALOG** 965-0250 **KEY NO.** -
 OPTIONAL GROUPS IN CATALOG ARE LISTED BY GROUP NO. BELOW WHEN USED.

PART NO.	QTY.	DESCRIPTION	PART NO.	QTY.	DESCRIPTION
Group - 3		Carburetor With Fuel Pump			
520-0820	1	Stud, Wet Hole			
120-0709	1	Cup, Oil Pump Intake			
102-0741	1	Base, Oil			
505-0158	1	Cap, Oil Drain			
505-0176	1	Nipple, Oil Drain			
505-0056	1	Plug, Oil Drain			
167-0188	1	Support, Stator Lead			
134-2606	1	Guard, Flywheel			
140-1259	1	Filter, Air-Polyurethane			
503-0644	1	Hose, Vacuum-Pump To Crank case Port			
149-1308	1	Spring, Vacuum Hose Support			
403-1021	2	Bracket, Lifting			
Parts not furnished by Onan Voltage Regulator					

<http://stores.ebay.com/UsefulCDs>

SPECIAL PARTS LIST FOR **MODEL** BF-MS **SPEC** 2493C
 FOR STANDARD PARTS REFER TO **CATALOG** 965-0250 **KEY NO.** -
 OPTIONAL GROUPS IN CATALOG ARE LISTED BY GROUP NO. BELOW WHEN USED.

PART NO.	QTY.	DESCRIPTION	PART NO.	QTY.	DESCRIPTION
Group - 3		Carburetor With Fuel Pump			
520-0820	1	Stud, Wet Hole			
120-0709	1	Cup, Oil Pump Intake			
102-0741	1	Base, Oil			
505-0158	1	Cap, Oil Drain			
505-0176	1	Nipple, Oil Drain			
505-0056	1	Plug, Oil Drain			
167-0188	1	Support, Stator Lead			
134-2606	1	Guard, Flywheel			
140-1259	1	Filter, Air-Polyurethane			
503-0644	1	Hose, Vacuum-Pump To Crank- case Port			
149-1308	1	Spring, Vacuum Hose Support			
403-1021	2	Bracket, Lifting			
Parts not furnished by Onan Voltage Regulator					

<http://stores.ebay.com/UsefulCDs>

SPECIAL PARTS LIST FOR **MODEL**

BF-MS

SPEC

2596B

FOR STANDARD PARTS REFER TO **CATALOG**

965-0250

KEY NO. -

OPTIONAL GROUPS IN CATALOG ARE LISTED BY GROUP NO. BELOW WHEN USED.

PART NO.	QTY.	DESCRIPTION	PART NO.	QTY.	DESCRIPTION
Group - 1		Spin-On Oil Filter			
Group - 3		Carburetor With Fuel Pump			
120-0709	1	Cup, Oil Pump Intake			
102-0741	1	Base, Oil			
505-0158	1	Cap, Oil Drain			
505-0176	1	Nipple, Oil Drain			
505-0056	1	Plug, Oil Drain			
167-0188	1	Support, Stator Lead			
134-2605	1	Housing, Blower			
140-1259	1	Filter, Air-Polyurethane			
503-0644	1	Hose, Vacuum-Pump To Crank case Port			
149-1308	1	Spring, Vacuum Hose Support			
134-2386	1	Housing, Cylinder Air - RH			

<http://stores.ebay.com/UsefulCDs>Dated Nov. 1, 1977

Revised _____

Page 1 of 1

SPECIAL PARTS LIST FOR **MODEL** BF-MS **SPEC** 2665C
FOR STANDARD PARTS REFER TO **CATALOG** 965-0250 **KEY NO.** -
OPTIONAL GROUPS IN CATALOG ARE LISTED BY GROUP NO. BELOW WHEN USED.

PART NO.	QTY.	DESCRIPTION	PART NO.	QTY.	DESCRIPTION
Group - 1		Spin-On Oil Filter			
110-2356	1	Block Assembly, Cylinder			
104-0794	1	Crankshaft			
120-0709	1	Cup, Oil Pump Intake			
102-0724	1	Base, Oil - Includes Plug			
191-1083	1	Stator, Alternator			
167-0188	1	Support, Stator Lead			
134-2605	1	Housing, Blower			
515-0146	1	Key, Stub Shaft			
134-2386	1	Housing, Cylinder Air - RH			
Parts not furnished by Onan Voltage Regulator					

SPECIAL PARTS LIST FOR MODEL BF-MS SPEC 2666C
 FOR STANDARD PARTS REFER TO CATALOG 965-0250 KEY NO. -
 OPTIONAL GROUPS IN CATALOG ARE LISTED BY GROUP NO. BELOW WHEN USED.

PART NO.	QTY.	DESCRIPTION	PART NO.	QTY.	DESCRIPTION
Group - 3		Carburetor With Fuel Pump			
520-0820	1	Stud, Wet Hole			
102-0741	1	Base, Oil			
505-0158	1	Cap, Oil Drain			
505-0176	1	Nipple, Oil Drain			
505-0056	1	Plug, Oil Drain			
167-0188	1	Support, Stator Lead			
134-2606	1	Guard, Flywheel			
140-1259	1	Filter, Air-Polyurethane			
503-0644	1	Hose, Vacuum-Pump To Crank- case Port			
149-1308	1	Spring, Vacuum Hose Support			
403-1021	2	Bracket, Lifting			
134-2938	1	Housing, Cylinder Air-RH			
134-2939	1	Housing, Cylinder Air-LH			

Parts not furnished by Onan
 Voltage Regulator

SPECIAL PARTS LIST FOR **MODEL** BF-MS **SPEC** 2675C
 FOR STANDARD PARTS REFER TO **CATALOG** 965-0250 **KEY NO.**
 OPTIONAL GROUPS IN CATALOG ARE LISTED BY GROUP NO. BELOW WHEN USED.

PART NO.	QTY.	DESCRIPTION	PART NO.	QTY.	DESCRIPTION
Group - 3		Carburetor With Fuel Pump			
520-0820	1	Stud, Wet Hole			
102-0741	1	Base, Oil			
505-0158	1	Cap, Oil Drain			
505-0176	1	Nipple, Oil Drain			
505-0056	1	Plug, Oil Drain			
167-0188	1	Support, Stator Lead			
134-2606	1	Guard, Flywheel			
140-1259	1	Filter, Air-Polyurethane			
503-0644	1	Hose, Vacuum-Pump To Crank- case Port			
149-1308	1	Spring, Vacuum Hose Support			
403-1021	2	Bracket, Lifting			
134-2938	1	Housing, Cylinder Air-RH			
134-2939	1	Housing, Cylinder Air-LH			
Parts not furnished by Onan Voltage Regulator					

SPECIAL PARTS LIST FOR **MODEL** BF-MS **SPEC** 2728D
 FOR STANDARD PARTS REFER TO **CATALOG** 965-0250 **KEY NO.** -
 OPTIONAL GROUPS IN CATALOG ARE LISTED BY GROUP NO. BELOW WHEN USED.

PART NO.	QTY.	DESCRIPTION	PART NO.	QTY.	DESCRIPTION
Group - 1		Spin-On Oil Filter			
Group - 3		Carburetor With Fuel Pump			
102-0741	1	Base, Oil			
167-0188	1	Support, Stator Lead			
134-2605	1	Housing, Blower			
140-1259	1	Filter, Air-Polyurethane			
503-0644	1	Hose, Vacuum-Pump To Crank- case Port			
149-1308	1	Spring, Vacuum Hose Support			
403-1021	2	Bracket, Lifting			
134-2386	1	Housing, Cylinder Air - RH			
Parts not furnished by Onan Voltage Regulator					

<http://stores.ebay.com/UsefulCDs>

SPECIAL PARTS LIST FOR MODEL BF-MS SPEC 2833D
 FOR STANDARD PARTS REFER TO CATALOG 965-0250 KEY NO. -
 OPTIONAL GROUPS IN CATALOG ARE LISTED BY GROUP NO. BELOW WHEN USED.

PART NO.	QTY.	DESCRIPTION	PART NO.	QTY.	DESCRIPTION
Group - 3		Carburetor With Fuel Pump			
520-0820	1	Stud, Wet Hole			
102-0741	1	Base, Oil			
505-0158	1	Cap, Oil Drain			
505-0176	1	Nipple, Oil Drain			
505-0056	1	Plug, Oil Drain			
191-1102	1	Stator, Alternator			
167-0188	1	Support, Stator Lead			
134-2606	1	Guard, Flywheel			
503-0644	1	Hose, Vacuum-Pump To Crank- case Port			
149-1308	1	Spring, Vacuum Hose Support			
403-1021	2	Bracket, Lifting			
134-2889	1	Housing, Cylinder Air - RH			
140-1259	1	Filter, Air-Polyurethane			
134-2890	1	Housing, Cylinder Air - LH			

Parts not furnished by Onan
 Voltage Regulator

SPECIAL PARTS LIST FOR **MODEL** BF-MS **SPEC** 2833E
 FOR STANDARD PARTS REFER TO **CATALOG** 965-0250 **KEY NO.** -
 OPTIONAL GROUPS IN CATALOG ARE LISTED BY GROUP NO. BELOW WHEN USED.

PART NO.	QTY.	DESCRIPTION	PART NO.	QTY.	DESCRIPTION
Group - 2		Top Adjusted Breaker Box			
Group - 3		Carburetor With Fuel Pump			
520-0820	1	Stud, Wet Hole			
102-0741	1	Base, Oil			
505-0158	1	Cap, Oil Drain			
505-0176	1	Nipple, Oil Drain			
505-0056	1	Plug, Oil Drain			
502-0080	1	Plug, Pipe-Oil Filter Port			
191-1102	1	Stator, Alternator			
167-0188	1	Support, Stator Lead			
134-2606	1	Guard, Flywheel			
140-1259	1	Filter, Air-polyurethane			
503-0740	1	Hose, Vacuum-Pump To Crank- case Port			
403-1021	2	Bracket, Lifting			
134-2889	1	Housing, Cylinder Air-RH			
134-2890	1	Housing, Cylinder Air-LH			

<http://stores.ebay.com/UsefulCDs>

Dated Nov. 1, 1977

Revised _____

Page 1 of 1

SPECIAL PARTS LIST FOR MODEL BF-MS SPEC 2851D
 FOR STANDARD PARTS REFER TO CATALOG 965-0250 KEY NO. -
 OPTIONAL GROUPS IN CATALOG ARE LISTED BY GROUP NO. BELOW WHEN USED.

PART NO.	QTY.	DESCRIPTION	PART NO.	QTY.	DESCRIPTION
Group - 3		Carburetor With Fuel Pump			
520-0820	1	Stud, Wet Hole			
102-0741	1	Base, Oil			
505-0158	1	Cap, Oil Drain			
505-0176	1	Nipple, Oil Drain			
191-1102	1	Stator, Alternator			
167-0188	1	Support, Stator Lead			
134-2606	1	Guard, Flywheel			
140-1259	1	Filter, Air-Polyurethane			
503-0644	1	Hose, Vacuum-Pump To Crank- case Port			
149-1308	1	Spring, Vacuum Hose Support			
403-1021	2	Bracket, Lifting			
134-2839	1	Housing, Cylinder Air-RH			
134-2890	1	Housing, Cylinder Air-LH			
505-0056	1	Plug, Oil Drain			

Parts not furnished by Onan
 Voltage Regulator

SPECIAL PARTS LIST FOR **MODEL** BF-MS **SPEC** 2851E
 FOR STANDARD PARTS REFER TO **CATALOG** 965-0250 **KEY NO.** -
 OPTIONAL GROUPS IN CATALOG ARE LISTED BY GROUP NO. BELOW WHEN USED.

PART NO.	QTY.	DESCRIPTION	PART NO.	QTY.	DESCRIPTION
Group - 2		Top Adjusted Breaker Box			
Group - 3		Carburetor With Fuel Pump			
520-0820	1	Stud, Wet Hole			
102-0741	1	Base, Oil			
505-0158	1	Cap, Oil Drain			
505-0176	1	Nipple, Oil Drain			
505-0056	1	Plug, Oil Drain			
502-0080	1	Plug, Pipe-Oil Filter Port			
191-1102	1	Stator, Alternator			
167-0188	1	Support, Stator Lead			
134-2606	1	Guard, Flywheel			
140-1259	1	Filter, Air-Polyurethane			
503-0740	1	Hose, Vacuum-Pump To Crank- case Port			
403-1021	2	Bracket, Lifting			
134-2889	1	Housing, Cylinder Air-RH			
134-2890	1	Housing, Cylinder Air-LH			

<http://stores.ebay.com/UsefulCDs>

Dated Nov. 1, 1977

Revised

Page 1 of 1

SPECIAL PARTS LIST FOR **MODEL** BF-MS **SPEC** 2891D
 FOR STANDARD PARTS REFER TO **CATALOG** 965-0250 **KEY NO.** -
 OPTIONAL GROUPS IN CATALOG ARE LISTED BY GROUP NO. BELOW WHEN USED.

PART NO.	QTY.	DESCRIPTION	PART NO.	QTY.	DESCRIPTION
Group - 3		Carburetor With Fuel Pump			
104-0897	1	Crankshaft			
102-0744	1	Base, Oil-Includes Plugs			
505-0056	1	Plug, Oil Base-Square Head			
505-0247	1	Plug, Oil Base-Socket Head			
191-0935	1	Stator, Alternator			
167-0188	1	Support, Stator Lead			
505-0775	2	Nipple, Half-Exhaust			
503-0644	1	Hose, Vacuum-Pump To Crank- case Port			
149-1308	1	Spring, Vacuum Hose Support			

Parts not furnished by Onan
 Voltage Regulator

SPECIAL PARTS LIST FOR **MODEL** BF-MS **SPEC** 2891E
 FOR STANDARD PARTS REFER TO **CATALOG** 965-0250 **KEY NO.** -
 OPTIONAL GROUPS IN CATALOG ARE LISTED BY GROUP NO. BELOW WHEN USED.

PART NO.	QTY.	DESCRIPTION	PART NO.	QTY.	DESCRIPTION
Group - 3		Carburetor With Fuel Pump			
104-0897	1	Crankshaft			
102-0744	1	Base, Oil - Includes Plugs			
505-0056	1	Plug, Oil Base - Square Head			
505-0247	1	Plug, Oil Base - Socket Head			
502-0080	1	Plug, Pipe-Oil Filter Port			
191-0935	1	Stator, Alternator			
167-0188	1	Support, Stator Lead			
505-0775	2	Nipple, Half-Exhaust			
503-0740	1	Hose, Vacuum-Pump To Crank-case Port			
Parts not furnished by Onan					
Voltage Regulator					

<http://stores.ebay.com/UsefulCDs>

Dated Nov. 1, 1977

Revised

Page 1 of 1

SPECIAL PARTS LIST FOR **MODEL** BF-MS **SPEC** 2927D
 FOR STANDARD PARTS REFER TO **CATALOG** 965-0250 **KEY NO.** -
 OPTIONAL GROUPS IN CATALOG ARE LISTED BY GROUP NO. BELOW WHEN USED.

PART NO.	QTY.	DESCRIPTION	PART NO.	QTY.	DESCRIPTION
Group - 1		Spin-On Oil Filter			
Group - 3		Carburetor With Fuel Pump			
110-0904	4	Rotocap, Valve Spring Retr.			
102-0724	1	Base, Oil - Includes Plug			
309-0064	1	Switch, Oil Pressure			
502-0020	1	Elbow, Oil Pressure Switch			
191-1116	1	Stator, Alternator			
167-0188	1	Support, Stator Lead			
134-2605	1	Housing, Blower			
140-1214	1	Housing, Air Cleaner			
140-1217	1	Filter, Air-Polyurethane			
140-1055	1	Filter, Air-Paper			
503-0644	1	Hose, Vacuum-Pump To Crank- case Port			
149-1308	1	Spring, Vacuum Hose Support			
403-1021	2	Bracket, Lifting			
134-3064	1	Housing, Cylinder Air-RH			
134-2890	1	Housing, Cylinder Air-LH			

<http://stores.ebay.com/UsefulCDs>

Dated _____

Revised June 9, 1977

Page 1 of 1

SPECIAL PARTS LIST FOR **MODEL** BF-MS **SPEC** 2929D
 FOR STANDARD PARTS REFER TO **CATALOG** 965-0250 **KEY NO.** -
 OPTIONAL GROUPS IN CATALOG ARE LISTED BY GROUP NO. BELOW WHEN USED.

PART NO.	QTY.	DESCRIPTION	PART NO.	QTY.	DESCRIPTION
Group - 1		Spin-On Oil Filter			
102-0783	1	Base, Oil - Includes Plug			
167-0188	1	Support, Stator Lead			
134-2605	1	Housing, Blower			
150-1368	1	Bracket, Governor Control			
150-1366	1	Link, Governor Control			
150-1367	1	Adapter, Governor Arm			
150-1369	1	Spring, Governor Return			
800-0034	2	Screw, Manifold Mounting			
520-0852	2	Stud, Manifold Mounting			
134-3064	1	Housing, Cylinder Air-RH			
134-2890	1	Housing, Cylinder Air-LH			
505-0086	2	Nipple, Half-Exhaust			
Parts not furnished by Onan					
Choke Cable Clips					
Voltage Regulator					

<http://stores.ebay.com/UsefulCDs>

SPECIAL PARTS LIST FOR **MODEL** BF-MS **SPEC** 2929E
 FOR STANDARD PARTS REFER TO **CATALOG** 965-0250 **KEY NO.** -
 OPTIONAL GROUPS IN CATALOG ARE LISTED BY GROUP NO. BELOW WHEN USED.

PART NO.	QTY.	DESCRIPTION	PART NO.	QTY.	DESCRIPTION
Group - 1		Spin-On Oil Filter			
110-1943	1	Block Assembly, Cylinder			
102-0783	1	Base, Oil - Includes Plug			
167-0188	1	Support, Stator Lead			
134-2605	1	Housing, Blower			
150-1368	1	Bracket, Governor Control			
150-1366	1	Link, Governor Control			
150-1367	1	Adapter, Governor Arm			
150-1369	1	Spring, Governor Return			
800-0053	2	Screw, Manifold Mounting			
520-0852	2	Stud, Manifold Mounting			
134-3064	1	Housing, Cylinder Air-RH			
134-2890	1	Housing, Cylinder Air-LH			
505-0086	2	Nipple, Half-Exhaust			
Parts not furnished by Onan					
Choke Cable Clips					
Voltage Regulator					

SPECIAL PARTS LIST FOR **MODEL** EE-MS **SPEC** 2938D
 FOR STANDARD PARTS REFER TO **CATALOG** 965-0250 **KEY NO.** -
OPTIONAL GROUPS IN CATALOG ARE LISTED BY GROUP NO. BELOW WHEN USED.

PART NO.	QTY.	DESCRIPTION	PART NO.	QTY.	DESCRIPTION
191-0935	1	Stator, Alternator			
167-0188	1	Support, Stator Lead			
332-0051	1	Clip, Wire-Top Blower Hsg.			
505-0086	2	Nipple, Half - Exhaust			
Parts not furnished by Onan Voltage Regulator					

<http://stores.ebay.com/UsefulCDs>

Dated Nov. 1, 1977

Revised _____

Page 1 of 1

SPECIAL PARTS LIST FOR **MODEL** BF-MS **SPEC** 2968D
 FOR STANDARD PARTS REFER TO **CATALOG** 965-0250 **KEY NO.** -
 OPTIONAL GROUPS IN CATALOG ARE LISTED BY GROUP NO. BELOW WHEN USED.

PART NO.	QTY.	DESCRIPTION	PART NO.	QTY.	DESCRIPTION
Group - 1		Spin-On Oil Filter			
Group - 3		Carburetor With Fuel Pump			
104-0921	1	Crankshaft			
520-0820	1	Stud, Wet Hole			
110-0904	4	Rotocap, Valve Spring Retr.			
102-0741	1	Base, Oil			
505-0158	1	Cap, Oil Drain			
505-0176	1	Nipple, Oil Drain			
191-1102	1	Stator, Alternator			
167-0188	1	Support, Stator Lead			
134-2605	1	Housing, Blower			
134-2606	1	Guard, Flywheel			
140-1259	1	Filter, Air-Polyurethane			
503-0644	1	Hose, Vacuum-Pump To Crank- case Port			
149-1308	1	Spring, Vacuum Hose Support			
403-1021	2	Bracket, Lifting			
134-3064	1	Housing, Cylinder Air-RH			
134-2890	1	Housing, Cylinder Air-LH			
505-0056	1	Plug, Oil Drain			

Parts not furnished by Onan
 Voltage Regulator

SPECIAL PARTS LIST FOR **MODEL** BE-MS **SPEC** 3128E
 FOR STANDARD PARTS REFER TO **CATALOG** 965-0250 **KEY NO.** -
 OPTIONAL GROUPS IN CATALOG ARE LISTED BY GROUP NO. BELOW WHEN USED.

PART NO.	QTY.	DESCRIPTION	PART NO.	QTY.	DESCRIPTION
Group - 1		Spin-On Oil Filter			
Group - 3		Carburetor With Fuel Pump			
110-1943	1	Block Assembly, Cylinder			
104-0921	1	Crankshaft			
110-0904	1	Rotocap, Valve Spring Retr.			
102-0724	1	Base, Oil - Includes Plug			
502-0020	1	Elbow, Oil Line			
501-0208	1	Line, Oil-Adapter To Tee			
167-0188	1	Support, Stator Lead			
134-2858	1	Housing, Blower			
503-0365	1	Clamp, Coil Mounting			
301-4041	1	Panel, Control			
308-0385	1	Switch, Key			
153-0097	1	Rod, Choke - Manual			
152-0041	2	Washer, Tension - Governor Control Mounting			
302-0060	1	Ammeter (20-0-20)			
193-0068	1	Gauge, Oil Pressure			
501-0004	1	Line, Oil-Adapter To Gauge			
502-0051	1	Coupling, Pipe-Oil Gauge To Oil Line			
150-0098	1	Spring, Governor			
150-0096	1	Stud, Governor Adjusting			
150-0621	1	Nut, Governor Adjusting			
150-1544	1	Adapter, Governor Arm			
134-2606	1	Guard, Flywheel			
800-0033	2	Screw, Manifold MTG-LH Side			
140-1259	1	Filter, Air-Polyurethane			
503-0740	1	Hose, Vacuum-Pump To Crank case Port			
332-1873	1	Bracket Assy-Terminal Blk.			
332-0604	1	Terminal Block			
505-0057	1	Plug, Oil Line Tee			
502-0003	2	Connector, Oil Line Tee			
332-1273	1	Strip, Marker			
338-0990	1	Harness, Wiring			
134-3288	1	Housing, Cylinder Air-RH			
134-3277	1	Housing, Cylinder Air-LH			
515-0052	1	Key, Stub Shaft			
152-0198	1	Arm, Governor Cont. - Vari.			

SPECIAL PARTS LIST FOR **MODEL** BF-MS **SPEC** 3157E
 FOR STANDARD PARTS REFER TO **CATALOG** 965-0250 **KEY NO.** -
 OPTIONAL GROUPS IN CATALOG ARE LISTED BY GROUP NO. BELOW WHEN USED.

PART NO.	QTY.	DESCRIPTION	PART NO.	QTY.	DESCRIPTION
Group - 1		Spin- On Oil Filter			
Group - 2		Top Adjusted Breaker Box			
Group - 3		Carburetor With Fuel Pump			
110-1943	1	Block Assembly, Cylinder			
110-0904	4	Rotocap, Valve Spring Retr.			
102-0724	1	Base, Oil - Includes Plug			
167-0188	1	Support, Stator Lead			
134-2605	1	Housing, Blower			
140-1259	1	Filter, Air-Polyurethane			
503-0740	1	Hose, Vacuum-Pump To Crank- case Port			
134-3064	1	Housing, Cylinder Air-RH			
134-2890	1	Housing, Cylinder Air-LH			

SPECIAL PARTS LIST FOR MODEL BF-MS SPEC 3221E
 FOR STANDARD PARTS REFER TO CATALOG 965-0250 KEY NO.
 OPTIONAL GROUPS IN CATALOG ARE LISTED BY GROUP NO. BELOW WHEN USED.

PART NO.	QTY.	DESCRIPTION	PART NO.	QTY.	DESCRIPTION
Group - 1		Spin-On Oil Filter			
Group - 2		Top Adjusted Breaker Box			
110-1943	1	Block Assembly, Cylinder			
110-0904	2	Rotocap, Exhaust Valve			
102-0744	1	Base, Oil - Includes Plugs			
505-0056	1	Plug, Oil Base-Square Head			
505-0247	1	Plug, Oil Base-Socket Head			
123-1292	1	Cap and Indicator, Oil Fill			
191-1102	1	Stator, Alternator			
167-0237	2	Plug, Spark - Resistor			
134-2605	1	Housing, Blower			
150-1366	1	Link, Governor Control			
150-1368	1	Bracket, Governor Control			
815-0104	1	Screw, Choke Lever Swivel #8-32 X 5/16 - Gov. Cont.			
516-0059	1	Pin, Cotter - Gov. Cont.			
152-0155	1	Swivel, Choke Lever			
167-1581	1	Cable, Spark Plug - 15" Res.			
167-1557	1	Cable, Spark Plug - 17" Res.			
150-1367	1	Adapter, Governor Arm			
800-0033	4	Screw, Manifold Mounting			
140-1430	1	Filter, Air-Polyurethane			
134-3064	1	Housing, Cylinder Air-RH			
134-2890	1	Housing, Cylinder Air-LH			
150-1369	1	Spring, Governor Return			

SPECIAL PARTS LIST FOR MODEL BF-MS SPEC 3250F
 FOR STANDARD PARTS REFER TO CATALOG 965-0250 KEY NO.
 OPTIONAL GROUPS IN CATALOG ARE LISTED BY GROUP NO. BELOW WHEN USED.

PART NO.	QTY.	DESCRIPTION	PART NO.	QTY.	DESCRIPTION
Group - 1		Spin-On Oil Filter			
Group - 3		Carburetor With Fuel Pump			
110-2357	1	Block Assembly, Cylinder			
110-1824	2	Insert, Exhaust Valve Seat			
112-0150	2	Piston And Pin			
110-2438	2	Valve, Exhaust			
110-2368	2	Valve, Intake			
110-0904	4	Rotocap, Valve Spring Retr.			
102-0724	1	Base, Oil - Includes Plug			
134-3209	1	Flywheel - Includes Ring Gear			
134-2858	1	Housing, Blower			
503-0365	1	Clamp, Coil Mounting			
301-3998	1	Panel, Control			
308-0140	1	Switch, Toggle-Cont. Panel			
332-0592	1	Jumper (Ground)-Control Panel Switch			
153-0097	1	Rod, Choke - Manual			
152-0198	1	Arm, Governor Cont. - Vari.			
152-0041	2	Washer, Tension-Governor Control Mounting			
150-1544	1	Adapter, Governor Arm			
150-0098	1	Spring, Governor			
150-0096	1	Stud, Governor Adjusting			
150-0621	1	Nut, Governor Adjusting			
134-3212	1	Guard, Flywheel			
134-3213	1	Guard - Stationary			
800-0033	4	Screw, Manifold Mounting			
140-1055	1	Filter, Air-Paper			
503-0740	1	Hose, Vacuum-Pump To Crank-case Port			
134-3327	1	Housing, Cylinder Air-RH			
134-3263	1	Housing, Cylinder Air-LH			

Parts not furnished by Onan
 Voltage Regulator

SPECIAL PARTS LIST FOR **MODEL** BF-MS **SPEC** 3264F
 FOR STANDARD PARTS REFER TO **CATALOG** 965-0250 **KEY NO.**
 OPTIONAL GROUPS IN CATALOG ARE LISTED BY GROUP NO. BELOW WHEN USED.

PART NO.	QTY.	DESCRIPTION	PART NO.	QTY.	DESCRIPTION
Group - 2		Top Adjusted Breaker Box			
Group - 3		Carburetor With Fuel Pump			
104-0897	1	Crankshaft			
102-0744	1	Base, Oil - Includes Plugs			
505-0056	1	Plug, Oil Base-Square Head			
505-0247	1	Plug, Oil Base-Socket Head			
502-0080	1	Plug, Pipe-Oil Filter Port			
191-0935	1	Stator, Alternator			
505-0775	2	Nipple, Half - Exhaust			
800-0033	4	Screw, Manifold Mounting			
503-0740	1	Hose, Vacuum-Pump To Crank- case Port			

<http://stores.ebay.com/UsefulCDs>

Dated Nov. 1, 1977

Revised

Page 1 of

SPECIAL PARTS LIST FOR MODEL

BF-MS

SPEC

3265F

FOR STANDARD PARTS REFER TO CATALOG 965-0250

KEY NO. -

OPTIONAL GROUPS IN CATALOG ARE LISTED BY GROUP NO. BELOW WHEN USED.

PART NO.	QTY.	DESCRIPTION	PART NO.	QTY.	DESCRIPTION
Group - 2		Top Adjusted Breaker Box			
Group - 3		Carburetor With Fuel Pump			
520-0820	1	Stud, Wet Hole			
102-0741	1	Base, Oil			
505-0158	1	Cap, Oil Drain			
505-0176	1	Nipple, Oil Drain			
505-0056	1	Plug, Oil Drain			
505-0057	1	Plug, Pipe-Oil Filter Port			
191-1102	1	Stator, Alternator			
150-1576	1	Arm, Governor Control			
134-2606	1	Guard, Flywheel			
800-0033	4	Screw, Manifold Mounting			
140-1259	1	Filter, Air-Polyurethane			
503-0740	1	Hose, Vacuum-Pump To Crank- case Port			
403-1021	1	Bracket, Lifting			
134-2889	1	Housing, Cylinder Air-RH			
134-2890	1	Housing, Cylinder Air-LH			

Parts not furnished by Onan

Governor Low Speed Stop And Swivel

SPECIAL PARTS LIST FOR **MODEL** BF-MS **SPEC** 3271E
 FOR STANDARD PARTS REFER TO **CATALOG** 965-0250 **KEY NO.** -
 OPTIONAL GROUPS IN CATALOG ARE LISTED BY GROUP NO. BELOW WHEN USED.

PART NO.	QTY.	DESCRIPTION	PART NO.	QTY.	DESCRIPTION
Group - 2		Top Adjusted Breaker Box			
Group - 3		Carburetor With Fuel Pump			
520-0820	1	Stud, Wet Hole			
102-0741	1	Base, Oil			
505-0158	1	Cap, Oil Drain			
505-0176	1	Nipple, Oil Drain			
505-0056	1	Plug, Oil Drain			
502-0080	1	Plug, Pipe-Oil Filter Port			
191-1102	1	Stator, Alternator			
167-0188	1	Support, Stator Lead			
134-2606	1	Guard, Flywheel			
140-1259	1	Filter, Air-Polyurethane			
503-0740	1	Hose, Vacuum-Pump To Crank-case Port			
403-1021	2	Bracket, Lifting			
134-2889	1	Housing, Cylinder Air-RH			
134-2890	1	Housing, Cylinder Air-LH			

Parts not furnished by Onan
 Governor Low Speed Stop

SPECIAL PARTS LIST FOR **MODEL** BF-MS **SPEC** 3283F
FOR STANDARD PARTS REFER TO **CATALOG** 965-0250 **KEY NO.** -
OPTIONAL GROUPS IN CATALOG ARE LISTED BY GROUP NO. BELOW WHEN USED.

PART NO.	QTY.	DESCRIPTION	PART NO.	QTY.	DESCRIPTION
505-0057	1	Plug, Pipe-Oil Filter Port			
191-0935	1	Stator, Alternator			
332-0051	1	Clip, Wire-Top Blower Hsg.			
800-0033	4	Screw, Manifold Mounting			
505-0086	2	Nipple, Half-Exhaust			

SPECIAL PARTS LIST FOR **MODEL** BF-MS **SPEC** 5294F
 FOR STANDARD PARTS REFER TO **CATALOG** 965-0250 **KEY NO.** -
OPTIONAL GROUPS IN CATALOG ARE LISTED BY GROUP NO. BELOW WHEN USED.

PART NO.	QTY.	DESCRIPTION	PART NO.	QTY.	DESCRIPTION
Group - 1		Spin-On Oil Filter			
Group - 2		Top Adjusted Breaker Box			
Group - 3		Carburetor With Fuel Pump			
110-1943	1	Block Assembly, Cylinder			
110-0904	4	Rotocap, Valve Spring Retr.			
102-0724	1	Base, Oil - Includes Plug			
134-2605	1	Housing, Blower			
800-0033	4	Screw, Manifold Mounting			
140-1259	1	Filter, Air-Polyurethane			
503-0740	1	Hose, Vacuum-Pump To Crank- case Port			
134-3064	1	Housing, Cylinder Air - RH			
134-2890	1	Housing, Cylinder Air - LH			

<http://stores.ebay.com/UsefulCDs>

SPECIAL PARTS LIST FOR MODEL BF-MS SPEC 3347F
 FOR STANDARD PARTS REFER TO CATALOG 965-0250 KEY NO.
 OPTIONAL GROUPS IN CATALOG ARE LISTED BY GROUP NO. BELOW WHEN USED.

PART NO.	QTY.	DESCRIPTION	PART NO.	QTY.	DESCRIPTION
Group - 2		Top Adjusted Breaker Box			
Group - 3		Carburetor With Fuel Pump			
520-0820	1	Stud, Wet Hole			
102-0741	1	Base, Oil			
505-0158	1	Cap, Oil Drain			
505-0176	1	Nipple, Oil Drain			
505-0056	1	Plug, Oil Drain			
505-0057	1	Plug, Pipe-Oil Filter Port			
191-1102	1	Stator, Alternator			
150-1576	1	Arm, Governor Control			
134-2606	1	Guard, Flywheel			
800-0033	4	Screw, Manifold Mounting			
140-1259	1	Filter, Air-Polyurethane			
503-0740	1	Hose, Vacuum-Pump To Crank- case Port			
403-1021	1	Bracket, Lifting			
134-2889	1	Housing, Cylinder Air-RH			
134-2890	1	Housing, Cylinder Air-LH			

Parts not furnished by Onan
 Governor Low Speed Stop and Swivel

SPECIAL PARTS LIST FOR **MODEL** BF-MS **SPEC** 3398F
FOR STANDARD PARTS REFER TO **CATALOG** 965-0250 **KEY NO.** -
OPTIONAL GROUPS IN CATALOG ARE LISTED BY GROUP NO. BELOW WHEN USED.

PART NO.	QTY.	DESCRIPTION	PART NO.	QTY.	DESCRIPTION
----------	------	-------------	----------	------	-------------

505-0057	1	Plug, Pipe-Oil Filter Port			
191-0935	1	Stator, Alternator			
332-0051	1	Clip, Wire-Top Blower Hsg.			
800-0033	4	Screw, Manifold Mounting			
505-0086	2	Nipple, Half - Exhaust			

SPECIAL PARTS LIST FOR **MODEL** BF-MS **SPEC** 3414F
 FOR STANDARD PARTS REFER TO **CATALOG** 965-0250 **KEY NO.** -
 OPTIONAL GROUPS IN CATALOG ARE LISTED BY GROUP NO. BELOW WHEN USED.

PART NO.	QTY.	DESCRIPTION	PART NO.	QTY.	DESCRIPTION
Group - 1		Spin-On Oil Filter			
Group - 3		Carburetor With Fuel Pump			
110-1943	1	Block Assembly, Cylinder			
102-0724	1	Base, Oil-Includes Plug			
134-2605	1	Housing, Blower			
800-0033	4	Screw, Manifold Mounting			
140-1055	1	Filter, Air-Paper			
503-0740	1	Hose, Vacuum-Pump To Crank- case Port			
134-2386	1	Housing, Cylinder Air - RH			

SPECIAL PARTS LIST FOR **MODEL** BF-MS **SPEC** 3437F
 FOR STANDARD PARTS REFER TO **CATALOG** 965-0250 **KEY NO.** -
 OPTIONAL GROUPS IN CATALOG ARE LISTED BY GROUP NO. BELOW WHEN USED.

PART NO.	QTY.	DESCRIPTION	PART NO.	QTY.	DESCRIPTION
Group - 1		Spin-On Oil Filter			
Group - 2		Top Adjusted Breaker Box			
Group - 3		Carburetor With Fuel Pump			
110-2453	1	Block Assembly, Cylinder			
110-1824	2	Insert, Exhaust Valve Seat			
112-0150	2	Piston and Pin			
110-2438	2	Valve, Exhaust			
110-2368	2	Valve, Intake			
110-0904	4	Rotocap, Valve Spring Retr.			
102-0724	1	Base, Oil - Includes Plug			
134-3209	1	Flywheel - Includes Ring Gear			
134-2858	1	Housing, Blower			
503-0365	1	Clamp, Coil Mounting			
152-0086	1	Bracket, Speed Cont. MTG.			
152-0083	1	Arm, Speed Cont. Adjusting			
152-0041	1	Washer, Tension-Speed Cont. Arm			
150-1544	1	Adapter, Governor Arm			
150-0098	1	Spring, Governor			
150-0147	1	Stud, Governor Adjusting			
150-0621	1	Nut, Governor Adjusting			
134-3212	1	Guard, Flywheel			
800-0033	4	Screw, Manifold Mounting			
140-1055	1	Filter, Air - Paper			
503-0740	1	Hose, Vacuum-Pump To Crank-case Port			
134-3327	1	Housing, Cylinder Air - RH			
134-3263	1	Housing, Cylinder Air - LH			
154-1669	1	Manifold, Exhaust			
155-1257	2	Clamp, Exhaust Manifold			

SPECIAL PARTS LIST FOR MODEL

BF-MS

SPEC

3446F

FOR STANDARD PARTS REFER TO CATALOG 965-0250

KEY NO.

OPTIONAL GROUPS IN CATALOG ARE LISTED BY GROUP NO. BELOW WHEN USED.

PART NO.	QTY.	DESCRIPTION	PART NO.	QTY.	DESCRIPTION
Group - 1		Spin-On Oil Filter			
Group - 3		Carburetor With Fuel Pump			
104-0992	1	Crankshaft			
112-0150	2	Piston and Pin			
110-2438	2	Valve, Exhaust			
110-2368	2	Valve, Intake			
110-0904	4	Rotocap, Valve Spring Retr.			
102-0724	1	Base, Oil - Includes Plug			
134-3209	1	Flywheel-Includes Ring Gear			
134-2858	1	Housing, Blower			
503-0365	1	Clamp, Coil Mounting			
301-3998	1	Panel, Control			
308-0140	1	Switch, Toggle-Cont. Panel			
332-0592	1	Jumper (Ground)-Control Panel Switch			
153-0097	1	Rod, Choke - Manual			
152-0198	1	Arm, Governor Cont. - Vari.			
152-0041	2	Washer, Tension - Governor Control Mounting			
150-1544	1	Adapter, Governor Arm			
150-0098	1	Spring, Governor			
150-0096	1	Stud, Governor Adjusting			
150-0621	1	Nut, Governor Adjusting			
134-3212	1	Guard, Flywheel			
134-3213	1	Guard - Stationary			
800-0033	4	Screw, Manifold Mounting			
140-1055	1	Filter, Air - Paper			
503-0740	1	Hose, Vacuum-Pump To Crank- case Port			
134-3327	1	Housing, Cylinder Air - RH			
134-3263	1	Housing, Cylinder Air - LH			
110-2618	1	Block Assembly, Cylinder			
110-1824	2	Insert, Exhaust Valve Seat			

Parts not furnished by Onan
Voltage Regulator