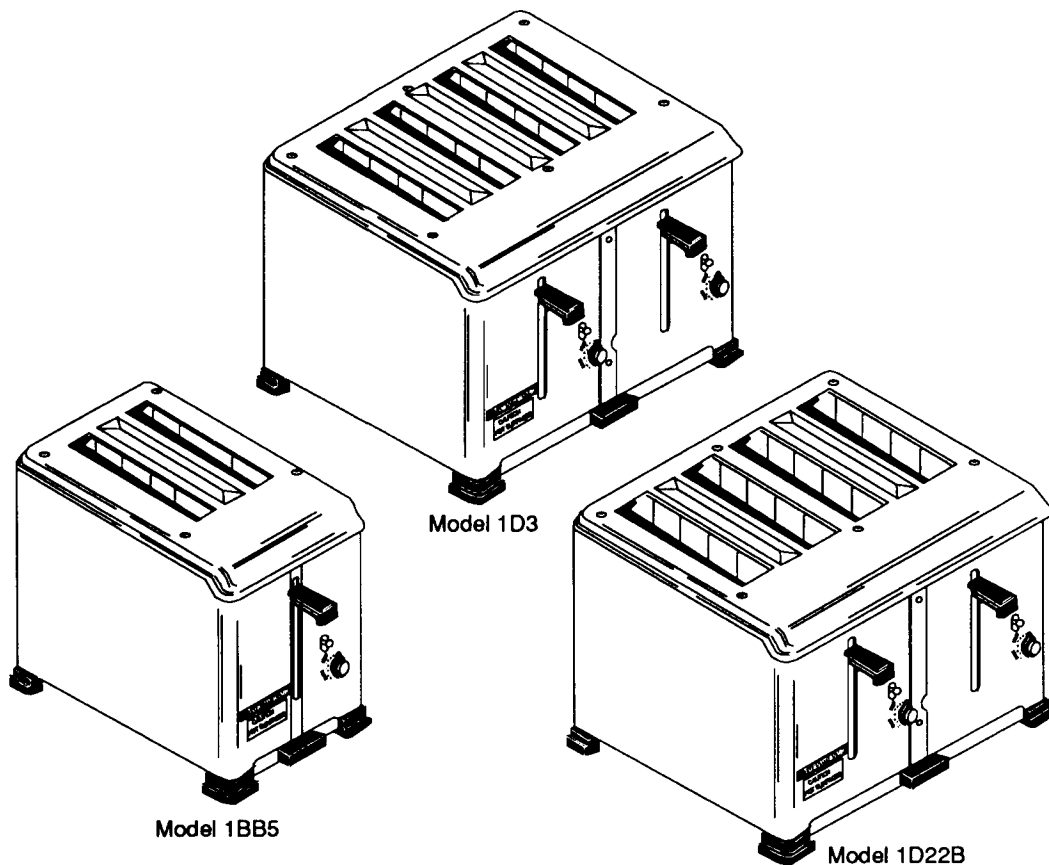


Toastmaster®

A Middleby Company

OWNER'S OPERATING & INSTALLATION MANUAL

**MECHANICAL SLOT TOASTERS
Models 1D3, 1D22B & 1BB5**



Toastmaster® • 1400 Toastmaster Drive • Elgin, IL 60120 • (708)741-3300
A Middleby Company

Middleby Corp 24 Hour Service Hotline 1-800-238-8444

Part No. 3102564

P3/93

Toastmaster®

NO QUIBBLE LIMITED WARRANTY

TOASTMASTER, HEREINAFTER REFERRED TO AS THE SELLER, WARRANTS EQUIPMENT MANUFACTURED BY IT TO BE FREE FROM DEFECTS IN MATERIAL AND WORKMANSHIP WHICH IT IS RESPONSIBLE. THE SELLER'S OBLIGATION UNDER THIS WARRANTY SHALL BE LIMITED TO REPLACING OR REPAIRING AT SELLER'S OPTION, WITHOUT CHARGE, ANY FOUND TO BE DEFECTIVE AND ANY LABOR AND MATERIAL EXPENSE INCURRED BY IN REPLACING OR REPAIRING SUCH PART. SUCH WARRANTY SHALL BE LIMITED TO THE ORIGINAL PURCHASER ONLY AND SHALL BE EFFECTIVE FOR A PERIOD OF ONE YEAR DATE OF ORIGINAL INSTALLATION, OR 18 MONTHS FROM DATE OF PURCHASE, IS EARLIER; PROVIDED THAT TERMS OF PAYMENT HAVE BEEN FULLY MET.

The warranty period for Accu-Miser griddles shall be 24 months from the date of installation or 30 months from the date of purchase, whichever is earlier.

Normal maintenance functions and customer abuse are not covered by this no quibble warranty.

Seller shall be responsible only for repairs or replacements of defective parts performed by Seller's authorized service personnel. Authorized service agencies are located in principal cities throughout the contiguous United States, Alaska and Hawaii. This no quibble warranty is only valid in the 50 United States. Outside of the United States, warranty labor will only be performed during normal working hours. Overtime and/or premium labor charges are the responsibility of the Buyer.

The foregoing warranty is exclusive and in lieu of all other warranties, expressed or implied. There are no implied warranties of merchantability or of fitness for a particular purpose.

The foregoing shall be Seller's sole and exclusive obligation and Buyer's sole and exclusive remedy for any action including breach of contract or negligence. In no event shall Seller be liable for a sum in excess of the purchase price of the item. Seller shall not be liable for any prospective or lost profits of Buyer.

This warranty is effective on Toastmaster equipment sold on, or after August 1, 1995.

© 1993 Toastmaster

Toastmaster • 1400 Toastmaster Dr. • Elgin, IL 60120-9272 • (708) 741 -3300 • FAX (708) 741 -0015

Middleby Corp 24 Hour Service Hotline 1-800-238-8444

IN CASE OF FIRE

De-energize toaster at disconnect switch. This will cut off power to the heating elements allowing toaster to cool. This reduces the flash point temperature making it easier to stop the fire.

CAUTION:

Do not attempt to fight a grease fire by playing the nozzle of the fire extinguisher directly on the burning grease. The force will cause the burning grease to be sprayed to adjoining equipment making it difficult to contain the fire. Only use a fire extinguisher filled with CO₂, which is for liquids and oils and suitable for electric powered equipment.

WARNING

DO NOT pick up the toaster by sticking fingers into toaster slots and grasping the heating elements. Damage to the heating elements and electrical shock can result.

RETAIN THIS MANUAL FOR FUTURE REFERENCE

This manual provides detailed information for installation and operation of your new Simplicity Toaster. It also contains some information to assist the operator in diagnosing problems in the event of a malfunction. This manual is an important tool for the operator and should be kept readily available.

FOR YOUR SAFETY

**DO NOT STORE OR USE GASOLINE OR OTHER
FLAMMABLE VAPORS OR LIQUIDS IN THE VICINITY OF
THIS OR ANY OTHER APPLIANCE**

NOTICE

**Using any parts other than
genuine Toastmaster factory
supplied parts relieves the
manufacturer of all liability.**

NOTICE

**Toastmaster (Manufacturer) reserves the
right to change specifications and product
design without notice. Such revisions do
not entitle the buyer to corresponding
changes, improvements, additions or
replacements for previously purchased
equipment.**

TABLE OF CONTENTS

SECTION 1	
DESCRIPTION	1
A Component Location	2
B Component Function	3
C Toaster Specifications	4
D Toaster Dimension Drawings	5-6
SECTION 2	
INSTALLATION	7
A Inspect For Shipping Damage	7
B Unpacking Toaster	7
C Electrical Connection	7
D Checking the Installation	7
SECTION 3	
OPERATION	9
A Location and Function of Controls	9
B Operating Procedure	10
C Operating Hints and Cautions	11
D Operating Capacity	11
E Cleaning	11
SECTION 4	
PARTS LIST	13
Model 1D3 & 1 D2-2 Exploded Drawing	14-15
Model 1D22B& 1D3B Exploded Drawing	16-17
Model 1BB5 Exploded Drawing	18-19
SECTION 5	
ELECTRICAL SCHEMATIC	21
Model 1D3 Schematic	21
Model 1D22B Schematic	22
Model 1BB5 Schematic	23

SECTION 1

DESCRIPTION

Toastmaster Model 1D3, 1D22B and 1BB5 Toasters are:

- Equipped with heating elements to provide uniform heat for even toasting.
- Automatic pop-up type toasters
- Equipped with an operating lever, color selection knob and manual release lever for each pair of toaster
- Equipped with wide slots. The Model 1 D22B bun toaster is equipped with extra wide slots.
- Timer controlled.
- Equipped with a crumb tray.

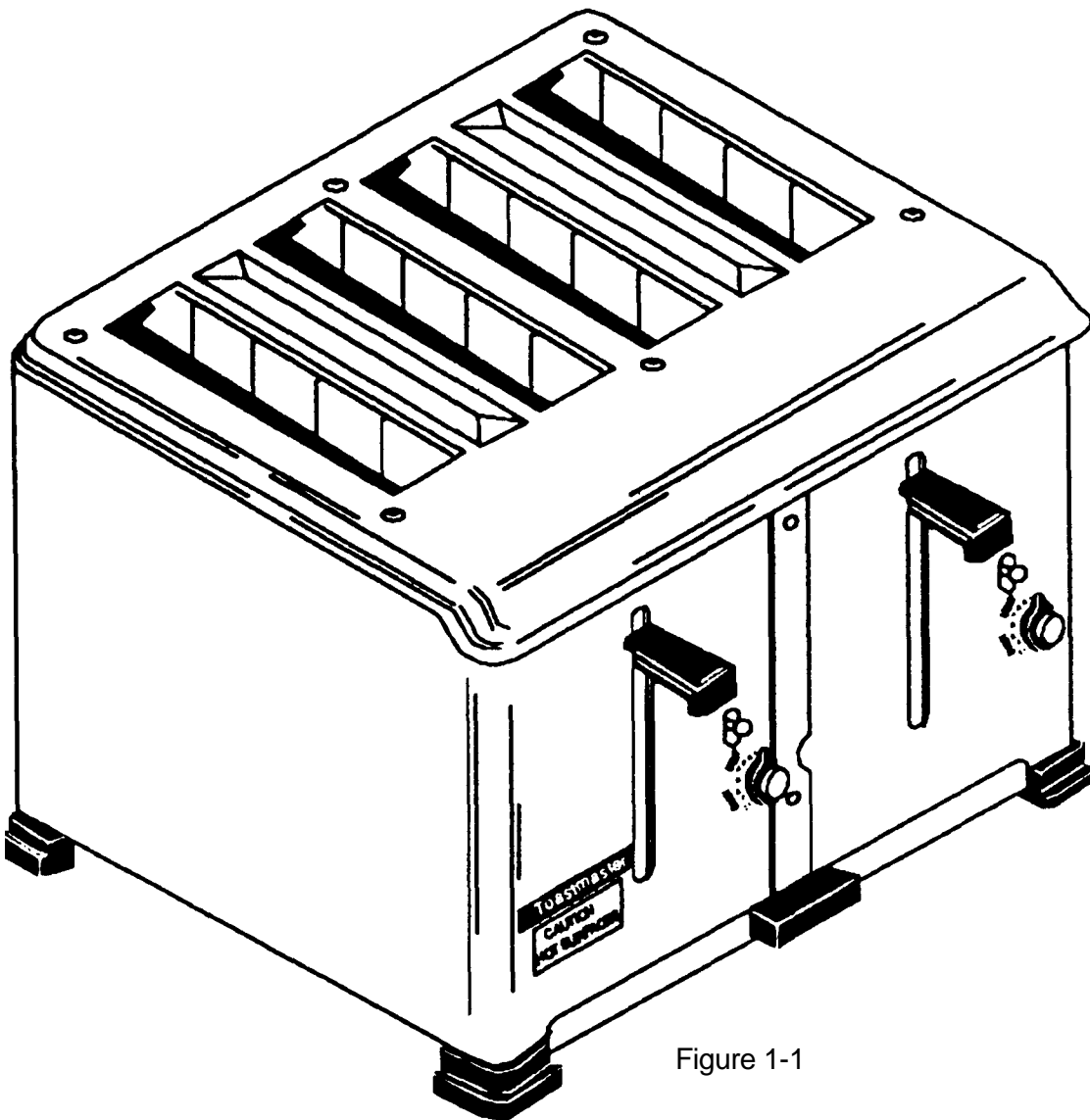


Figure 1-1

SECTION 1 - DESCRIPTION

A. Component Location

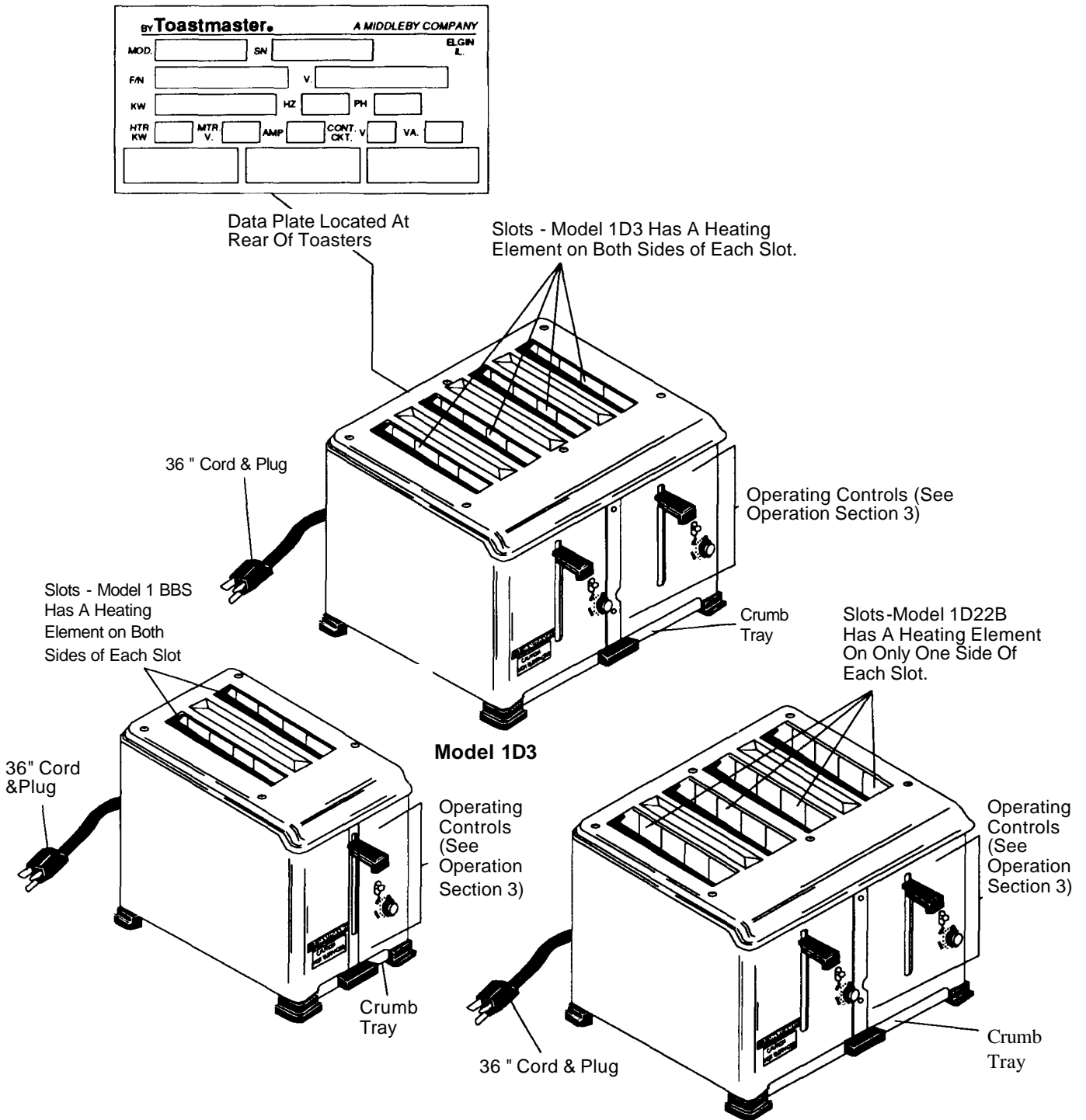


Figure 1-2
Component Location

B. Component Function

1. Slots

- a. Model 1D3 Toaster has four slots for toasting one to four slices of bread. The width of the toasting slots will accommodate "Texas Size" bread, frozen waffles, English muffins and many other food items. A heating element is located on both sides of each slot for a total of 8 elements.
- b. Model 1 BBS Toaster has two slots for toasting one or two slices of bread. The width of the toasting slots will accommodate "Texas Size" bread, frozen waffles, English muffins and many other food items. A heating element is located on both sides of each slot for a total of 4 elements.
- c. Model 1 D22B is a bun toaster which has four extra wide slots for toasting one to four buns. The toaster is equipped with an element on only one side of each of four slots for a total of four elements. This allows toasting of buns on one side only.

2. Operating Controls

(Refer to Operation Section 3)

3. Crumb Tray

The crumb tray is located in the bottom of the toaster under all slots. The crumb tray is removed for cleaning by pulling straight out from the front of the toaster.

SECTION 1 - DESCRIPTION

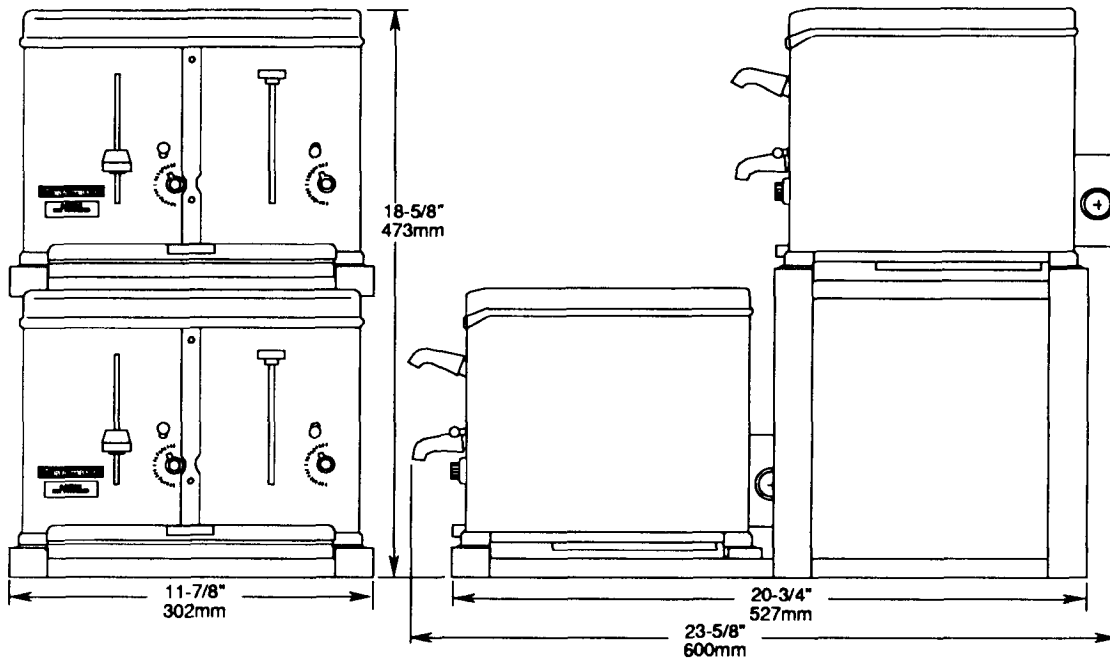
NOTICE

Toastmaster (Manufacturer) reserves the right to change specifications and product design without notice. Such revisions do not entitle the buyer to corresponding changes, improvements, additions or replacements for previously purchased equipment.

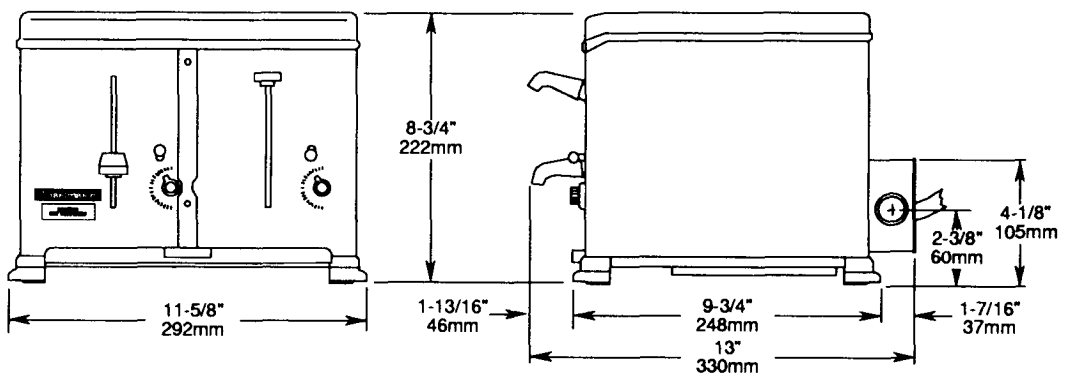
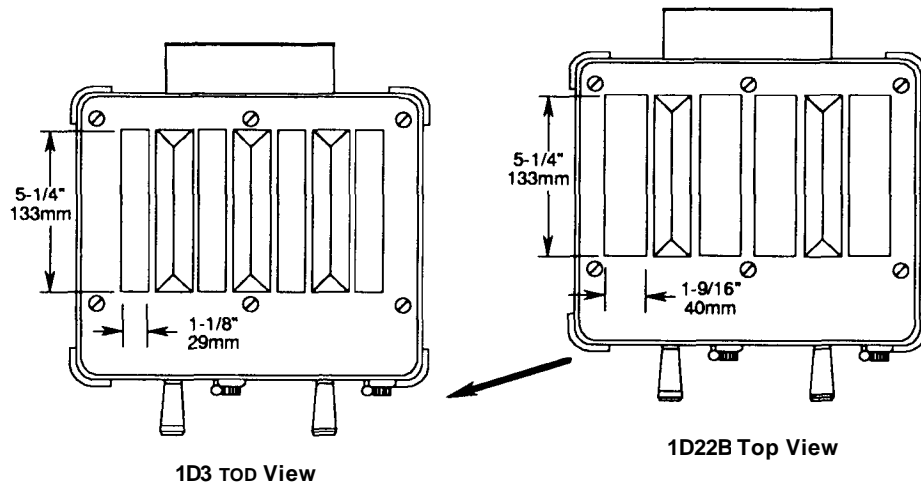
C. Toaster Specifications:

	SPECIFICATION CHART		
	Model1D3	Model 1BB5	Model 1D22B
Overall Dimensions			
Width	11-5/8" (292mm)	6-1/2" (165mm)	11-5/8" (292mm)
x	x	x	x
Depth	13" (330mm)	12-9/16" (319mm)	13" (330mm)
x	x	x	x
Height	8-3/4" (222mm)	8-3/4" (222mm)	8-3/4" (222mm)
Toasting Slot Dimensions			
Width	1-1/8" (29mm) wide	1-1/8" (29mm) wide	1-9/16" (40mm) wide
x	x	x	x
Length	5-1/4" (133mm) long	5-1/4" (133mm) long	5-1/4" (133mm) long
Approximate Net Weight	20 lbs (9.1 kg)	13 lbs (5.9 kg)	20 lbs (9.1 kg)
Approximate Shipping Weight	25 lbs (11.3 kg)	15 lbs (6.8 kg)	25 lbs (11.3 kg)
Construction	Formed & Welded Sheet Steel		
Finish	Chrome Steel		
Capacity	4 slices/load, 250 slices/hour	2 slices/ load 125 slices/hour	4 bun halves/load 250/hour
Cord	36" (914mm)	36" (914mm)	36" (914mm)
Plug:	Current	NEMA6-15P (208V & 240V)	NEMA5-15P (120V)
	Non-Current	NEMA14-20P (120/208 V, 115/230 V & 120/240V)	NEMA5-20P (120V) NEMA6-15P (208V,230V & 240V) NEMA 14-20P (120V, 120/208V, 115/230 V&120/240V)
Electrical:	Current	208V(12.5Amp) 240V (10.83 Amp), 2 Pole, 3 Wire	120V, 10.83 Amp 2 Pole, 3 Wire
	Non-Current	120/208 V, 120/240V, 10.83Amp/line, 3 Pole, 4 Wire	120/208V, 120/240V, 8.0 Amp/line 208V, 4.62 Amp 240V, 4.0 Amp 2 Pole, 3 Wire

D. Model 1D3 and 1D22B Toaster Dimension Drawings



1D3 and/or 1D22B mounted on 1D3CS Stand



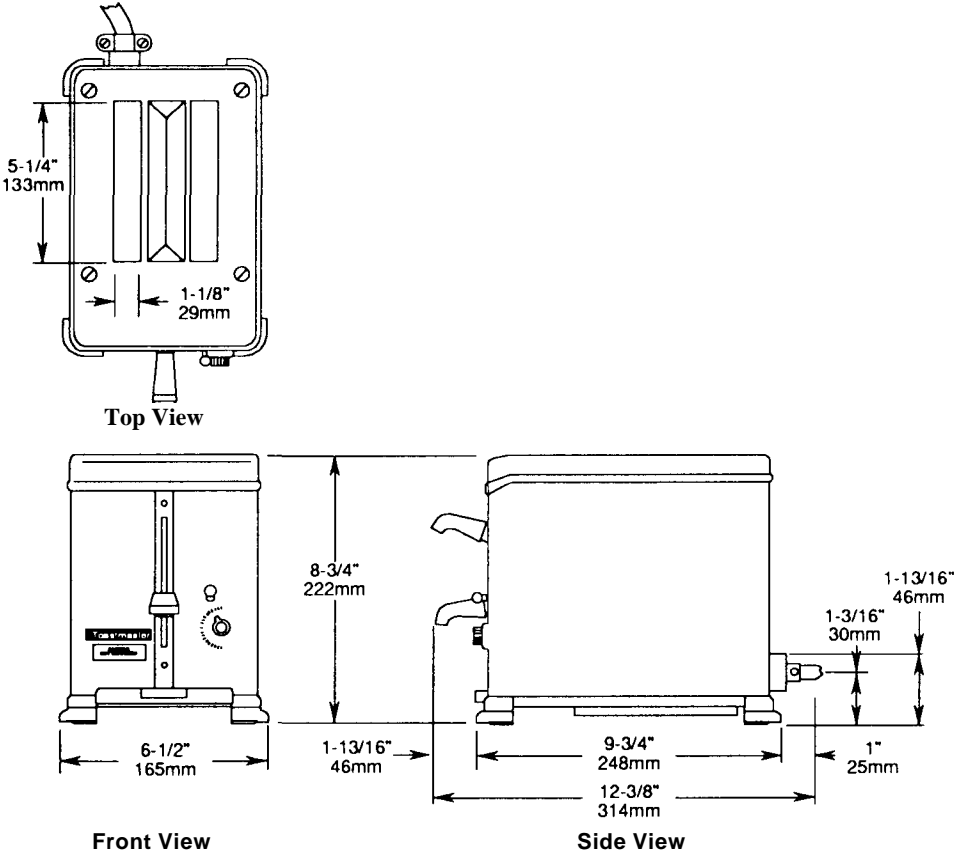
1D3 or 1D22B Front View

1D3 or 1D22B Side View

1D3 and/or 1D22B Dimension Drawings

SECTION 1 - DESCRIPTION

D (continued). Model 1BB5 Toaster Dimension Drawing



1BB5 Dimension Drawing

SECTION 2

INSTALLATION

A. Inspect for Shipping Damage

All shipping containers should be examined for damage before and during unloading. This equipment was carefully inspected and packaged at the factory. The freight carrier has assumed responsibility for its safe transit and delivery. If equipment is received in damaged condition, either apparent or concealed, a claim must be made with the delivering carrier.

1. Apparent Damage or Loss - If damage or loss is apparent it must be noted on the freight bill or express receipt at the time of delivery, and it must be signed by the earner's agent (driver). If this is not done, the carrier may refuse the claim. The carrier will supply the necessary claim forms.

2. Concealed Damage or Loss - If damage or loss is NOT apparent until after equipment is unpacked, a request for inspection of concealed damage must be made with carrier within 15 days. The carrier will make an inspection and will supply necessary claim forms. Be certain to retain all contents plus external and internal packaging materials for inspection.

B. Unpacking Toaster

1. Remove staples from carton.
2. Lift out foam packing and poly bag from around toaster.

WARNING:

When handling toaster DO NOT stick your fingers into slots as damage to heating elements may result.

3. Lift toaster out of carton and set in place on counter.

CAUTION:

Before making any electrical connection be sure the main electrical supply source is turned "OFF".

C. Electrical Connection

All 1D3, 1BB5 and 1D22B toasters are factory equipped with cord and plug. **Do not** change cord and plug to fit existing receptacle. Proper receptacle must be in place in accordance with local electrical codes.

Refer to Specification Chart in Section 1 for plug numbers.

D. Checking the Installation

1. Turn main electrical supply source "ON".
2. Move Color Selector Knob to 9 o'clock position.
3. Lower operating lever.
4. Check if all toaster slots are heating. Check that all heating elements are heating.
5. Lift manual release lever.
6. Check that all heating elements are no longer heating.

SECTION 3

OPERATION

A. Location and Function of Controls

The following information provides a basic description of the toaster controls, their location and the function they perform. The operator must be familiar with the controls.

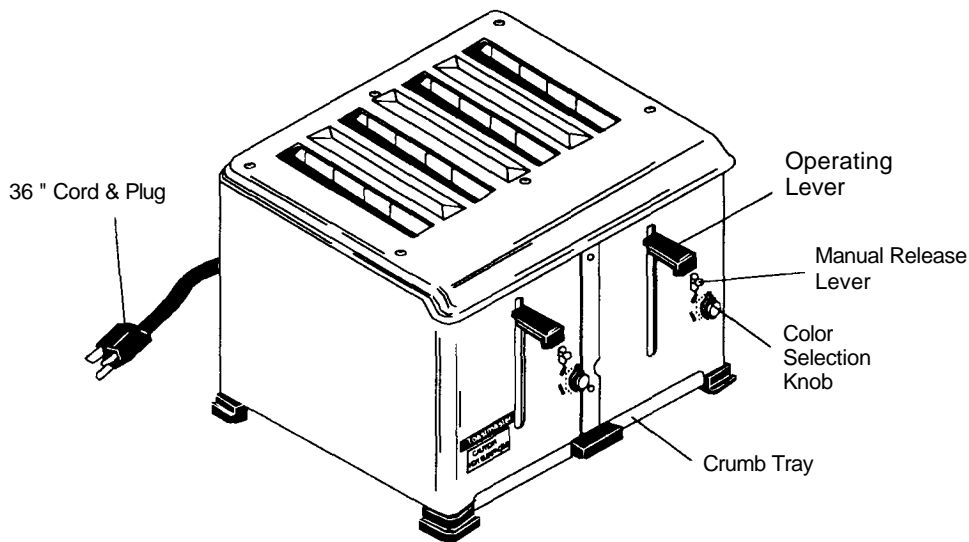


Figure 3-1
Operation Controls

(Model 1D3 shown. Models 1 BBS and 1 D22B operation control are basically the same as the Model 1 D3)

1. Operating Lever

Lowering the operating lever lowers the bread into the toasting chambers. When the toast has reached its set darkness the operating lever and the toast will automatically be raised.

2. Color Selection Knob

Color selection knob is used to set the desired darkness of the toast.

3. Manual Release Lever

Manual release lever is used to manually raise the toast during the toasting cycle.

B.

Operation Procedure

1. Insert bread into toaster slots.
IMPORTANT: On Model 1D22B bun toasters the buns must be inserted so the side to be toasted faces the heating elements. The heating elements are located as shown in Figure 3-2.

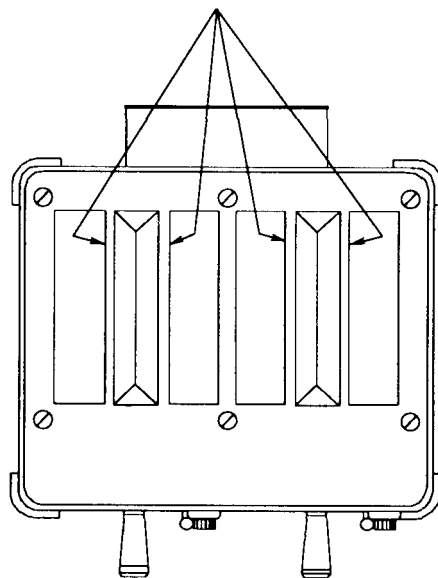
2. Position color selection knob at desired darkness. A medium color setting is 9 o'clock. Turn left for lighter toast and right for darker toast.

NOTE: It will be necessary to determine the color setting for each different product you toast. Test a single piece at a 9 o'clock setting and then increase or decrease as necessary.

3. Lower the operating lever to lower the bread into the toasting chambers.

4. Wait for the completion of the cycle, and toast will automatically be raised.

Side of bun to be toasted must face the heating element. Heating elements are on the side of the slots as shown.



1D22B Top View
Figure 3-2

C. Operating Hints and Cautions**1. Toast Color**

Experiment with the color selection knob so you can find the proper setting for the color you desire in your toasted product.

2. Moisture In Bread

When toasting bread it is advisable to use one or two day old bread. Fresh bread contains more moisture and is apt to toast unevenly.

3. Products to Toast

Use your Models 1 D3 and 1 BBS toasters for bread, texas toast, frozen waffles, English muffins and similar items.

Use your Model 1 D22B toaster to toast buns (Toasts on one side only).

4. Clearing Jams

CAUTION! Disconnect electric power or unplug toaster before attempting to remove a toast jam.

CAUTION! DO NOT stick knives and forks into the toasting chambers as you may damage the heating elements, and cause electrical shock.

Use extreme caution to remove a toast jam. It is always better to wait for toaster to cool, if time permits, before removing jammed toast. Unplug toaster before removing a toast jam.

5. Lifting Toaster

WARNING! DO NOT pick up the toaster by sticking fingers into toaster slots and grasping the heating elements. Damage to the heating elements and electrical shock can result.

CAUTION! Always disconnect electrical power or unplug toaster before cleaning or performing any service.

6. Service

Service MUST BE performed only by an authorized Toastmaster Service Agent.

D. Operation Capacity

The **Model 1D3** will toast up to 250 slices/hour.

The **Model 1BB5** will toast up to 125 slices/hour.

The **Model 1D22B** will toast up to 250 buns/hour.

E. Cleaning

CAUTION! Always disconnect electrical power or unplug toaster before cleaning or performing any service.

1. Exterior

The exterior of your toaster may be kept clean by wiping with a sponge or cloth squeezed from hot or warm detergent water. Wipe with clean, damp cloth to remove detergent and then wipe dry. DO NOT use an abrasive cleaner or abrasive pads as it will scratch and dull the finish.

2. Crumb tray

The crumb tray should be removed and emptied daily. Wash crumb tray with warm detergent water and rinse with clear water.

SECTION 4 - PARTS LIST

MODEL 1 D3 with cord & 1 D2-2 without cord
Four Slice Bread Toasters

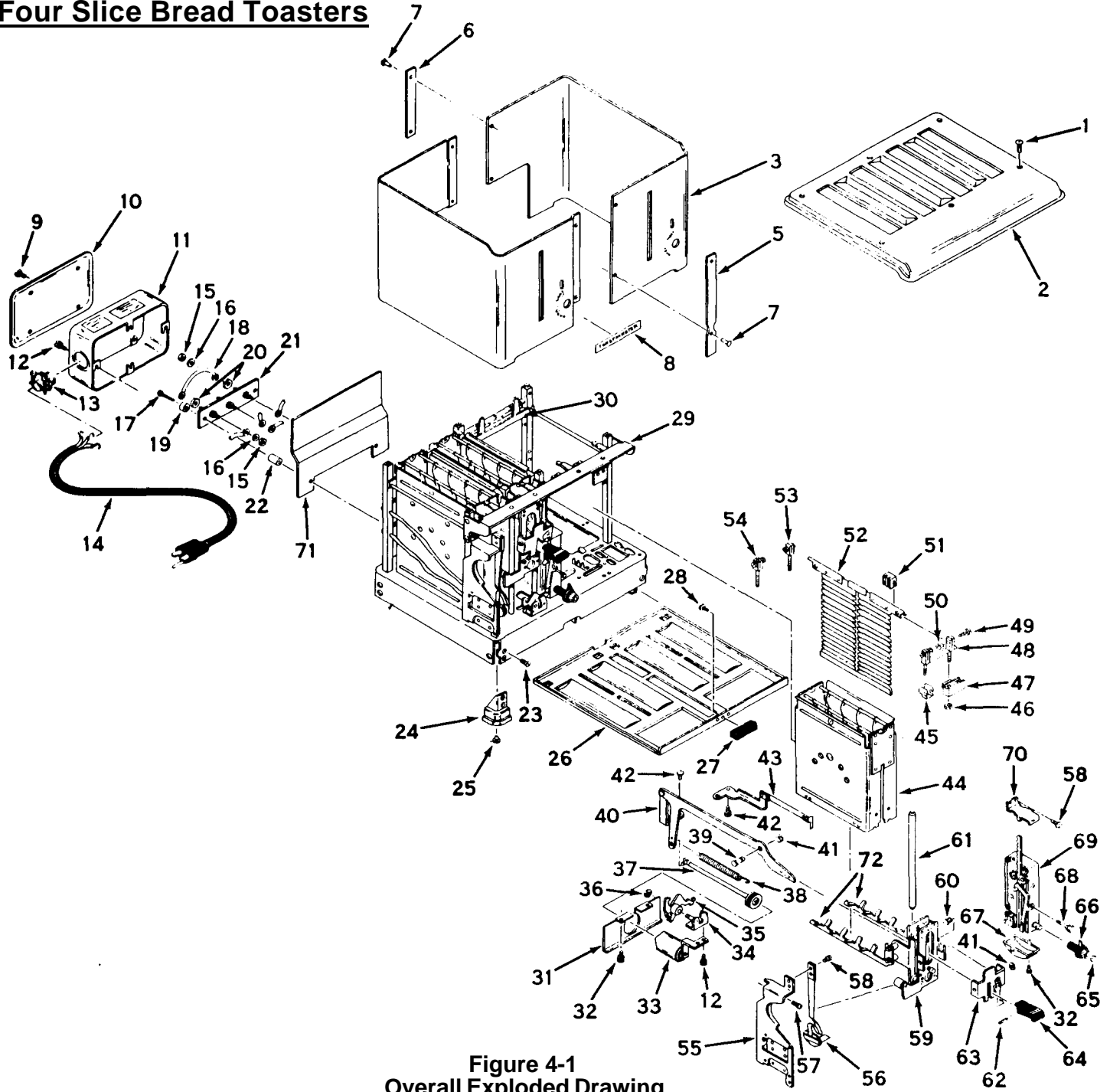


Figure 4-1
Overall Exploded Drawing

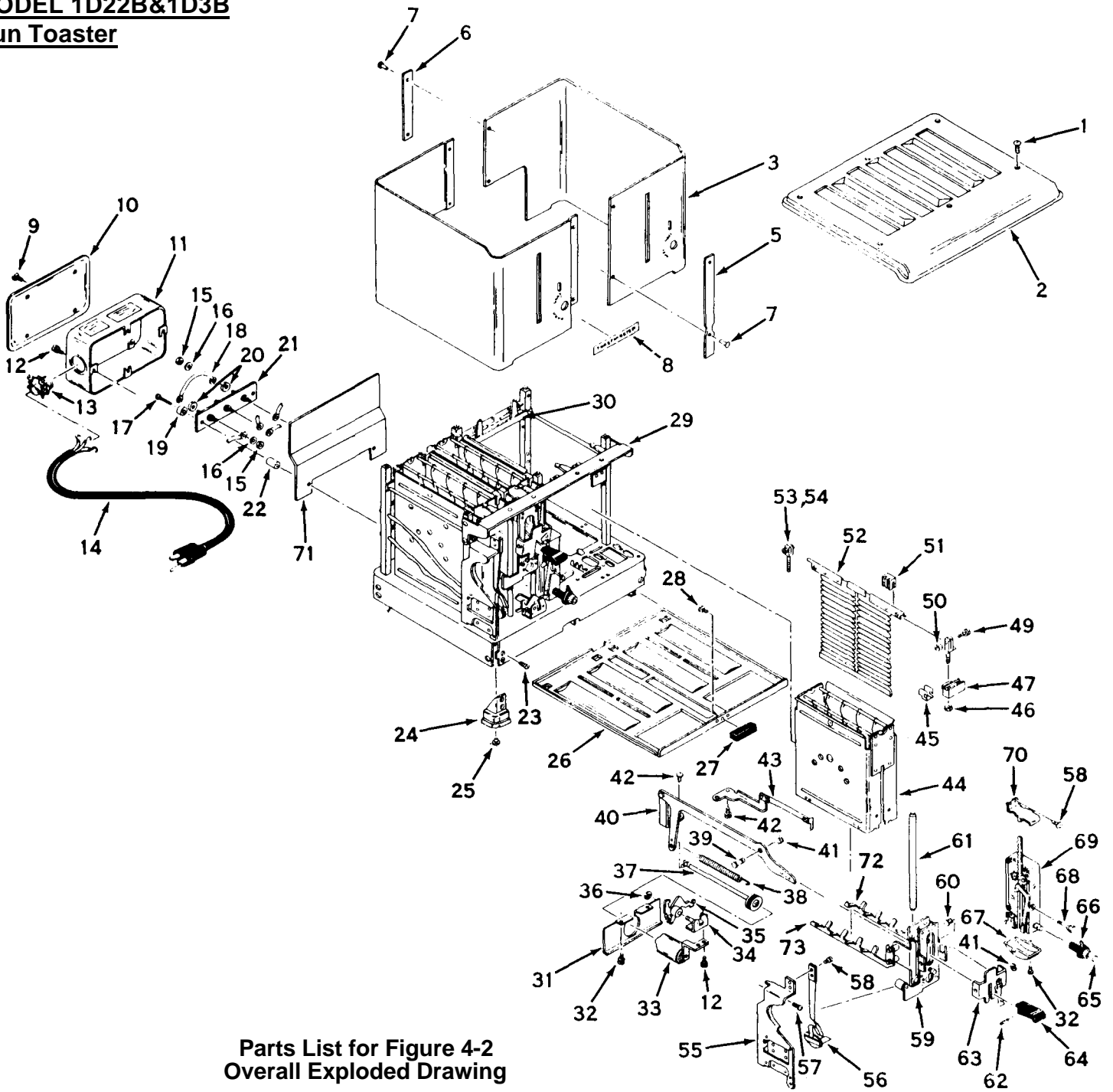
ITEM#	QTY	PART#	DESCRIPTION
1	6	K1DS136	MACHINE SCREW, #10-32 x 1/4", TRUSS HEAD
2	1	K1DC42	CASE TOP
3	1	K1D85A	CASE ASSEMBLY, COMPLETE
5	1	K1DC10	FRONT CASE BINDER
6	1	K1DC11	REAR CASE BINDER
7	4	K1 DS201	RIVET, 0.141x1/4"
8	1	2400075	TOASTMASTER NAME PLATE
9	4	1B6S61	MACHINE SCREW, #8-32 x 1/4", TRUSS HEAD

SECTION 4 - PARTS LIST

10	1	K1DC32	TERMINAL BOX COVER
11	1	K1DC39	TERMINAL BOX
12	8	1DS6	MACHINE SCREW, #8-32 x 1/4", ROUND HEAD
13	1	3882D8735	1/2" CABLE CONNECTOR
14	1	1D3S5	CORD & PLUG, 250V (CURRENT)
14	1	1D3S4	CORD & PLUG, 125V/250V (4 WIRE, NON-CURRENT)
14		3001059	CORD & PLUG, 125V (3 WIRE, NON-CURRENT)
15	6	1DS29	HEX NUT, BRASS, #8-32 x 11/32"
16	6	K1DF140	BRASS WASHER, 1/2" O.D. x 0.195 I.D.
17	2	141108821	MACHINE SCREW, #8-32 x 1", ROUND HEAD
18	1	K1DC40	JUMPER WIRE (208V, 230V & 240V TOASTERS ONLY)
19	2	K1DS101	CUP BUSHING
20	2	3B82D8755	BRASS CUP WASHER, #8
21	1	K1D43	TERMINAL PLATE ASSEMBLY
22	2	K1DF143	SPACER
23	4	K1DS185	THREAD CUTTING SCREW, #8-18 x 1/2", FLAT HEAD
24	4	K1DS198	ZYTEL FOOT
25	4	K1DS268	RUBBER FOOT INSERT
26	1	K1D92A	CRUMB PAN ASSEMBLY
27	1	K1DS182	DRAWER PULL CRUMB PAN HANDLE, ZYTEL
28	1	K1DS186	THREAD CUTTING SCREW, #5-40 x 3/8", PAN HEAD
29	1	K1DF202	GUIDE SHAFT RETAINER
30	2	K1DF20	OVEN RETAINER ASSEMBLY, FRONT OR REAR
*	2	K1D47	SHOCK ABSORBER BRACKET & PISTON ASSEMBLY
31	2	K1DB46	BAFFLE PLATE
32	4	K1AS20	MACHINE SCREW, #5-40 x 1/8", ROUND HEAD
33	2	K1D42	SHOCK ABSORBER CYLINDER & BRACKET ASSEMBLY
34	2	K1D40A1	TRIP RELEASE BRACKET ASSEMBLY
35	2	K1D41	TRIP RELEASE LEVER & SPRING ASSEMBLY
36	2	3B82D8809	SMALL HORSESHOE WASHER
37	2	K1 D46A	SHOCK ABSORBER PISTON & LINK ASSEMBLY
38	2	K1DS27	OPERATING SPRING LEVER
39	2	K1DF121	OPERATING LEVER ROLLER STUD
40	2	K1D52	OPERATING LEVER ASSEMBLY
41	2	B102851	"E" RETAINING RING, 0.126"
42	4	1429A8817	MACHINE SCREW, #8-32 x 3/8", ROUNDHEAD
43	2	K1D48	THERMOSTAT, HOOK & BRACKET ASSEMBLY
44	4	K1D18010	OVEN & GUARD WIRE ASSEMBLY, RIGHT OR LEFT
45	4	K1DF102	CHANGE-OVER LINK, SHORT
46	16	E336A8803	STEEL HEX NUT, #5-40 x 1/4"
47	12	K1DS48	ELEMENT POST INSULATOR
48	8	K1D116	TERMINAL POST & STRAP ASSEMBLY
49	16	K1DS111	BINDING POST SCREW, #5-40 x 7/16", PAN HEAD
50	16	K1DF165	BINDING POST NUT
51	16	K1DS47	ELEMENT CLIP INSULATOR
52	8	K1D3917	ELEMENT ASSEMBLY 104V/325W FOR 208V TOASTERS (CURRENT)
52	8	K1D3922	ELEMENT ASSEMBLY 120V/325W FOR 240V TOASTERS (CURRENT)
52	8	K1D3922	ELEMENT ASSEMBLY 120V/325W FOR 120/208V and 120/240V TOASTERS (NON-CURRENT)
53	8	K1D159	REAR BINDING POST, UNKEYED
54	8	K1D158	REAR BINDING POST, KEYED
*	2	K1D77B	SWITCH ASSEMBLY, COMPLETE, TWO POLE
55	2	K1C42B	STATIONARY SWITCH ASSEMBLY, TWO POLE
56	2	1D3F25	MOVEABLE SWITCH ASSEMBLY, TWO POLE
57	2	K1DS209	MACHINE SCREW, #5-40 x 5/16", S.S., ROUND HEAD, PRE-ASSEMBLED
58	8	K1DS195	MACHINE SCREW, #5-40 x 3/16", ROUND HEAD
59	2	K1D14610	VERTICAL ROLLER ASSEMBLY
60	2	K1DF116	HANDLE BRACKET STUD, SHORT
61	4	K1DF175	VERTICAL SHAFT
62	2	K1DS213	FRONT HANDLE SCREW, #6-32 x 1/4", PAN HEAD
63	2	K1D147	HANDLE BRACKET ASSEMBLY
*	2	K1DF114	HANDLE BRACKET RELEASE CLIP
*	2	K1DS114	HANDLE BRACKET RELEASE CLIP STUD
64	2	3562A15	OPERATING HANDLE, ZYTEL
65	2	8140804	TIMING BUTTON INSERT
66	2	K1DS181	TIMING BUTTON, ZYTEL
67	2	K1DM4	TIMER UNDERCOVER GUARD
68	2	K1DC30	MANUAL RELEASE STUD
*	2	K1DS206	TRIP RELEASE LEVER SPRING
69	2	K1D201	TIMER ASSEMBLY
70	2	K1DF88	TIMER RETAINER BRACKET
71	1	1D5B15	TERMINAL BAFFLE
72	4	7002192	BREAD RACK, RIGHT OR LEFT (BREAD)

*PARTS NOT IDENTIFIED BY KEY NUMBERS

**MODEL 1D22B&1D3B
Bun Toaster**



**Parts List for Figure 4-2
Overall Exploded Drawing**

ITEM	QTY	PART NO.	DESCRIPTION
1	6	K1DS136	MACHINE SCREW, #10-32 x 1/4", TRUSS HEAD
2	1	K1DC34	CASE TOP, BUN
3	1	K1D85A	CASE ASSEMBLY, COMPLETE
5	1	K1DC10	FRONT CASE BINDER
6	1	K1DC11	REAR CASE BINDER
7	4	K1DS201	RIVET, 0.141 x 1/4"
8	1	2400075	TOASTMASTER NAMEPLATE
9	4	1B6S61	MACHINE SCREW, #8-32 x 1/4", TRUSS HEAD

SECTION 4 - PARTS LIST

10	1	K1 DC32	TERMINAL BOX COVER
11	1	K1DC39	TERMINAL BOX
12	8	1DS6	MACHINE SCREW, #8-32 x 1/4", ROUND HEAD
13	1	3882D8735	1/2" CABLE CONNECTOR
14	1	1D3S5	CORD & PLUG, 250V (CURRENT)
14	1	1D3S4	CORD & PLUG, 125V/250V (4 WIRE, NON-CURRENT)
14	1	3001059	CORD & PLUG, 125V (3 WIRE (NON-CURRENT)
15	6	1DS29	HEX NUT, BRASS, #8-32 x 11/32"
16	6	K1DF140	BRASS WASH ER, 1/2" O.D. x 0.195 I.D.
17	2	1411D8821	MACHINE SCREW, #8-32 x 1", ROUND HEAD
18	1	K1DC40	JUMPER WIRE (208V, 230V & 240V TOASTERS ONLY)
19	2	K1DS101	CUP BUSHING
20	2	3B82D8755	BRASS CUP WASHER, #8
21	1	K1D43	TERMINAL PLATE ASSEMBLY
22	2	K1DF143	SPACER
23	4	K1DS185	THREAD CUTTING SCREW, #8-18 x 1/2", FLAT HEAD
24	4	K1DS198	ZYTEL FOOT
25	4	K1DS268	RUBBER FOOT INSERT
26	1	K1D92A	CRUMB PAN ASSEMBLY
27	1	K1DS182	DRAWER PULL CRUMB PAN HANDLE, ZYTEL
28	1	K1DS186	THREAD CUTTING SCREW, #5-40 x 3/8", PAN HEAD
29	1	K1DF202	GUIDE SHAFT RETAINER
30	2	K1DF20	OVEN RETAINER ASSEMBLY, FRONT OR REAR
*	2	K1D47	SHOCK ABSORBER BRACKET & PISTON ASSEMBLY
31	2	K1 DB46	BAFFLE PLATE
32	4	K1AS20	MACHINE SCREW, #5-40 x 1/8", ROUND HEAD
33	2	K1D42	SHOCK ABSORBER CYLINDER & BRACKET ASSEMBLY
34	2	K1D40A1	TRIP RELEASE BRACKET ASSEMBLY
35	2	K1D41	TRIP RELEASE LEVER & SPRING ASSEMBLY
36	2	3B82D8809	SMALL HORSESHOE WASHER
37	2	K1 D46A	SHOCK ABSORBER PISTON & LINK ASSEMBLY
38	2	K1DS27	OPERATING SPRING LEVER
39	2	K1DF121	OPERATING LEVER ROLLER STUD
40	2	K1D52	OPERATING LEVER ASSEMBLY
41	2	B102851	"E" RETAINING RING, 0.126"
42	4	1429A8817	MACHINE SCREW, #8-32 x 3/8", ROUND HEAD
43	2	K1D48	THERMOSTAT, HOOK & BRACKET ASSEMBLY
44	2	K1D180	OVEN & GUARD WIRE ASSEMBLY (RIGHT)
44	2	K1D181	OVEN & GUARD WIRE ASSEMBLY (LEFT)
45	4	K1DF102	CHANGE-OVER LINK, SHORT
46	8	E336A8803	STEEL HEX NUT, #5-40 x 1/4"
47	4	K1 DS48	ELEMENT POST INSULATOR
49	8	K1DS111	BINDING POST SCREW, #5-40 x 7/16", PAN HEAD
50	8	K1DF165	BINDING POST NUT
51	8	K1DS47	ELEMENT CLIP INSULATOR
52	4	K1D3923	ELEMENT ASSEMBLY 120V, 480W FOR 120V TOASTERS (CURRENT)
52	4	K1D3918	ELEMENT ASSEMBLY 104V, 480W FOR 208V TOASTERS (NON-CURRENT)
52	4	K1D3923	ELEMENT ASSEMBLY 120V, 480W FOR 240V, 120/208V and 120/240V TOASTERS (NON-CURRENT)
53	4	K1D159	REAR BINDING POST, UNKEYED
54	4	K1D158	REAR BINDING POST, KEYED
*	2	K1D77B	SWITCH ASSEMBLY, COMPLETE, TWO POLE
55	2	K1C42B	STATIONARY SWITCH ASSEMBLY, TWO POLE
56	2	1D3F25	MOVEABLE SWITCH ASSEMBLY, TWO POLE
57	2	K1DS209	MACHINE SCREW, #5-40 x 5/16", S.S., ROUND HEAD PRE-ASSEMBLED
58	8	K1DS195	MACHINE SCREW, #5-40 x 3/16", ROUND HEAD
59	2	1D3B146	VERTICAL ROLLER ASSEMBLY
60	2	K1DF116	HANDLE BRACKET STUD, SHORT
61	4	K1DF175	VERTICAL SHAFT
62	2	K1DS213	FRONT HANDLE SCREW, #6-32 x 1/4", PAN HEAD
63	2	1D3B147	HANDLE BRACKET ASSEMBLY
*	2	K1DF114	HANDLE BRACKET RELEASE CLIP
*	2	K1DS114	HANDLE BRACKET RELEASE CLIP STUD
64	2	3562A15	OPERATING HANDLE, ZYTEL
65	2	B 140804	TIMING BUTTON INSERT
66	2	K1DS181	TIMING BUTTON, ZYTEL
67	2	K1DM4	TIMER UNDERCOVER GUARD
68	2	K1DC30	MANUAL RELEASE STUD
*	2	K1DS206	TRIP RELEASE LEVER SPRING
69	2	K1D201	TIMER ASSEMBLY
70	2	K1DF88	TIMER RETAINER BRACKET
71	1	1D5B15	TERMINAL BAFFLE
72	2	K1D170	BREAD RACK, RIGHT (BUN)
73	2	K1D171	BREAD RACK, LEFT (BUN)

*PARTS NOT IDENTIFIED BY KEY NUMBERS

MODEL 1BB5
Two Slice Bread Toaster

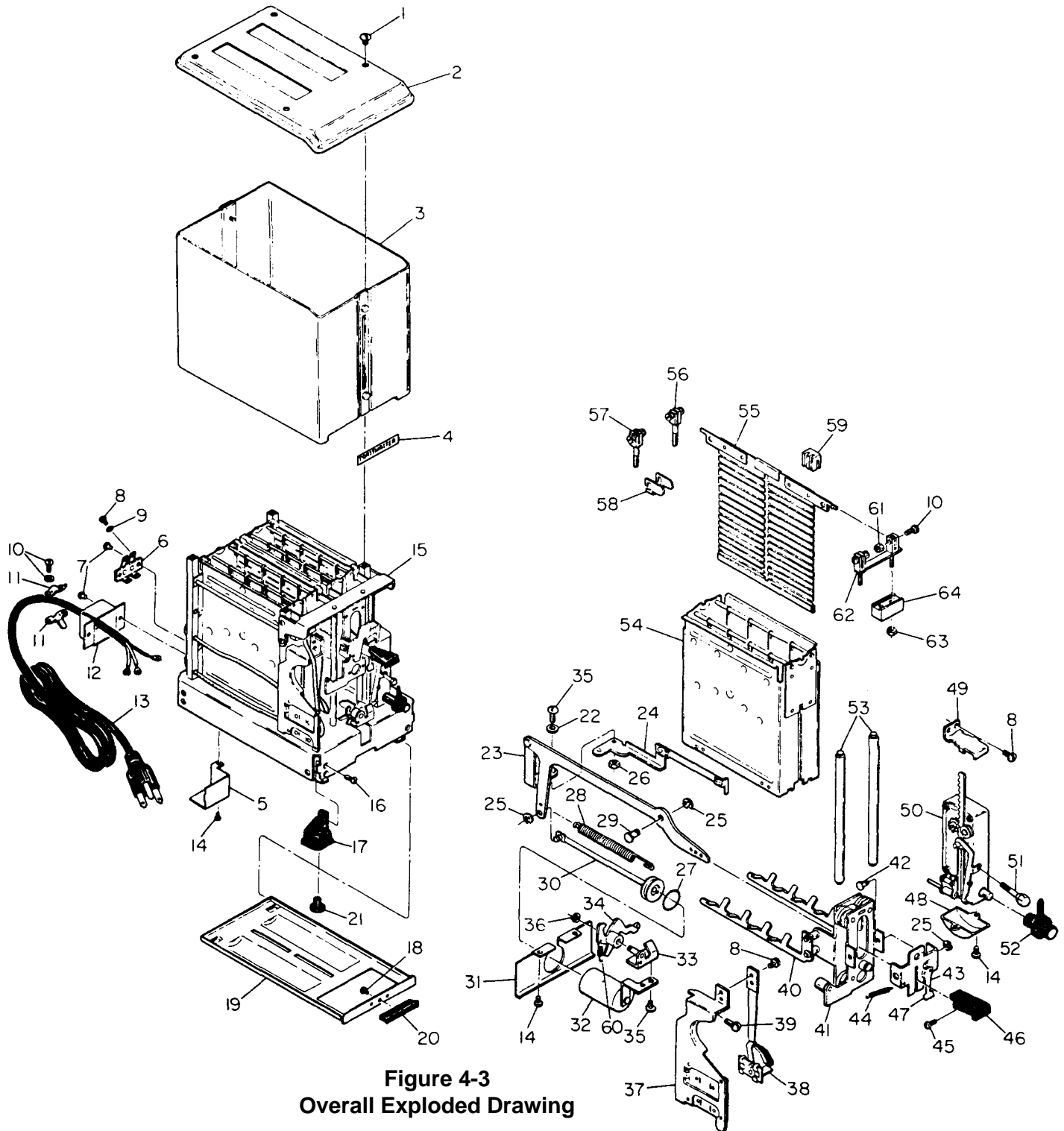


Figure 4-3
Overall Exploded Drawing

ITEM	QTY	PART NO.	DESCRIPTION
1	6	K1DS136	MACHINE SCREW, #10-32 x 1/4", TRUSS HEAD
2	1	S1BC2	CASE TOP, BREAD
3	1	1BB510	CASE ASSEMBLY
4	1	1523B3029	TOASTMASTER NAMEPLATE
5	1	1BB5B3	TERMINAL BAFFLE
6	1	1BB526	CORD TERMINAL & INSULATOR ASSEMBLY
7	2	1B12S60	TUBULAR STEEL RIVET, .118/.123 x 5/32-
8	2	K1DS195	SCREW, #5-40 x 1/4", PAN HEAD, STAINLESS STEEL

SECTION 4 - PARTS LIST

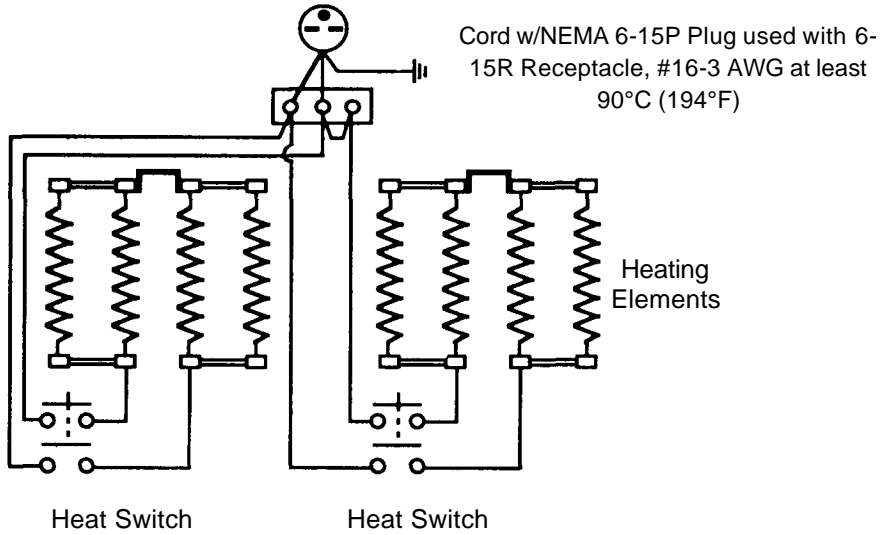
9	2	K1AF17	BRASS WASHER. .128 I.D. x .308 O.D. x 1/32"
10	1	K1DS111	SEMS SCREW, PRE-ASSEMBLED, #5-40 x 1/2-, PAN HEAD
11	2	S1BC8	CABLE STRAIN RELIEF
12	1	1BB5C4	STRAIN RELIEF BOX
13	1	1511E8705	CORD & PLUG, 125V (CURRENT)
13	1	1BB5S4	CORD & PLUG, 250V (NON-CURRENT)
14	4	K1AS20	SCREW. #5-40 x 1/8-, ROUND HEAD
15	1	S1BF22	GUIDE SHAFT BRACKET
16	2	K1DS185	THREAD CUTTING SCREW, #8-18 x 1/2". FLAT HEAD
17	4	K1DS198	ZYTEL FOOT
18	1	K1DS186	THREAD CUTTING SCREW, #5-40 x 3/8", PAN HEAD
19	1	S1B3A	CRUMB PAN
20	1	K1DS182	DRAWER PULL HANDLE, ZYTEL
21	4	K1DS228	RUBBER FOOT INSERT
22	1	K1DS12	#8 LOCKWASHER
23	1	K1D52	OPERATING LEVER ASSEMBLY
24	1	K1D48	THERMOSTAT HOOK & BRACKET ASSEMBLY
25	1	B102851	"E" RETAINING RING, #5144-9
26	1	1429A8827	HEX STEEL NUT, #8-32
27	1	K1DS115	PISTON RING
28	1	K1 DS27	OPERATING LEVER SPRING
29	1	K1DF121	OPERATING LEVER ROLLER STUD
30	1	K1D46A	SHOCK ABSORBER PISTON & LINK ASSEMBLY
31	1	K1 DB54	BAFFLE PLATE
32	1	K1D42	SHOCK ABSORBER CYLINDER & BRACKET ASSEMBLY
33	1	K1D40A1	TRIP RELEASE BRACKET ASSEMBLY
34	1	K1D41	TRIP RELEASE LEVER & SPRING ASSEMBLY
35	2	1429A8817	SCREW, #8-32 x 3/8", ROUND HEAD
36	1	B112811	•E" RETAINING RING, #5144-18
*	1	K1D77B	SWITCH ASSEMBLY, TWO POLE
37	1	K1C42B	STATIONARY SWITCH ASSEMBLY, TWO POLE
38	1	1D3F25	MOVEABLE SWITCH ASSEMBLY, TWO POLE
39	1	K1DS209	MACHINE SCREW, PRE-ASSEMBLED, #5-40 x 5/16", ROUND HEAD, S.S.
40	2	7002192	BREAD RACK, RIGHT OR LEFT
41	1	K1D146A	VERTICAL ROLLER ASSEMBLY WITH BREAD RACKS
42	1	K1DF116	HANDLE BRACKET STUD, SHORT
43	1	K1D147	HANDLE BRACKET ASSEMBLY (Refer to Item 47 for RELEASE CLIP)
44	1	K1DS206	SWITCH TENSION SPRING
45	1	K1DS213	SCREW, #6-32 x 1/4", PAN HEAD
46	1	3562A15	ZYTEL HANDLE
47	1	K1DF114	HANDLE BRACKET RELEASE CLIP
*	1	K1DS114	HANDLE BRACKET RELEASE CLIP STUD
48	1	K1DM4	TIMER UNDERCOVER GUARD
49	1	K1DF88	TIMER RETAINER BRACKET
50	1	K1D201	TIMER ASSEMBLY
51	1	K1DC30	MANUAL RELEASE STUD
52	1	K1DS181	TIMING BUTTON, ZYTEL
53	2	K1DF175	VERTICAL SHAFT
54	2	K1D18010	OVEN & GUARD WIRE ASSEMBLY (RIGHT OR LEFT)
55	4	K1D3922	ELEMENT ASSEMBLY 120V, 325W FOR 120V TOASTERS (CURRENT)
55	4	K1D3922	ELEMENT ASSEMBLY 120V, 325W FOR 240V TOASTERS (NON-CURRENT)
55	4	K1D3917	ELEMENT ASSEMBLY 104V, 325W FOR 208V TOASTERS (NON-CURRENT)
56	4	K1D158	REAR BINDING POST, UNKEYED
57	4	K1D159	REAR BINDING POST, KEYED
58	2	K1DF102	CHANGEVER LINK, SHORT
59	8	K1DS47	ELEMENT CLIP INSULATOR
60	1	K1DS206	TRIP RELEASE LEVER SPRING
61	8	K1DF165	BINDING POST NUT
62	4	K1D116	TERMINAL POST & STRAP ASSEMBLY
63	8	E336A8803	STEEL HEX NUT, #5-40x1/4"
64	4	K1DS48	ELEMENT POST INSULATOR
*	2	K1DF200	OVEN RETAINER, FRONT OR REAR

*PARTS NOT IDENTIFIED BY KEY NUMBERS

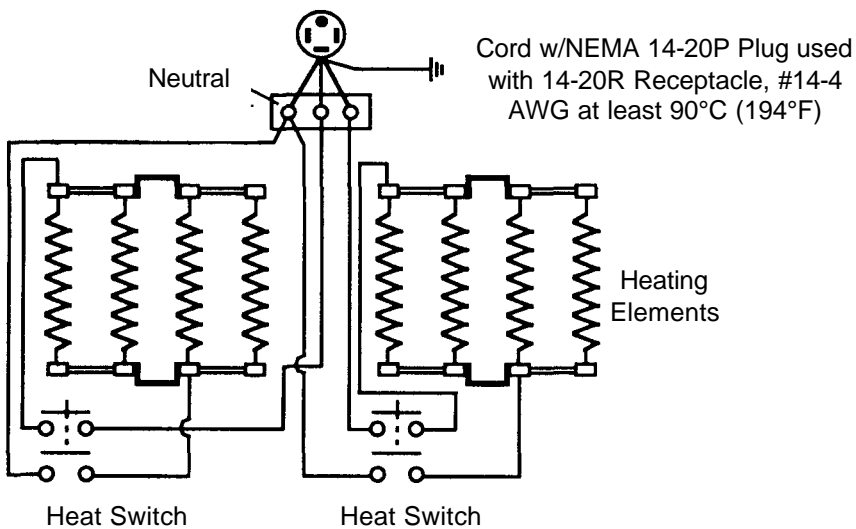
SECTION 5

SCHEMATICS

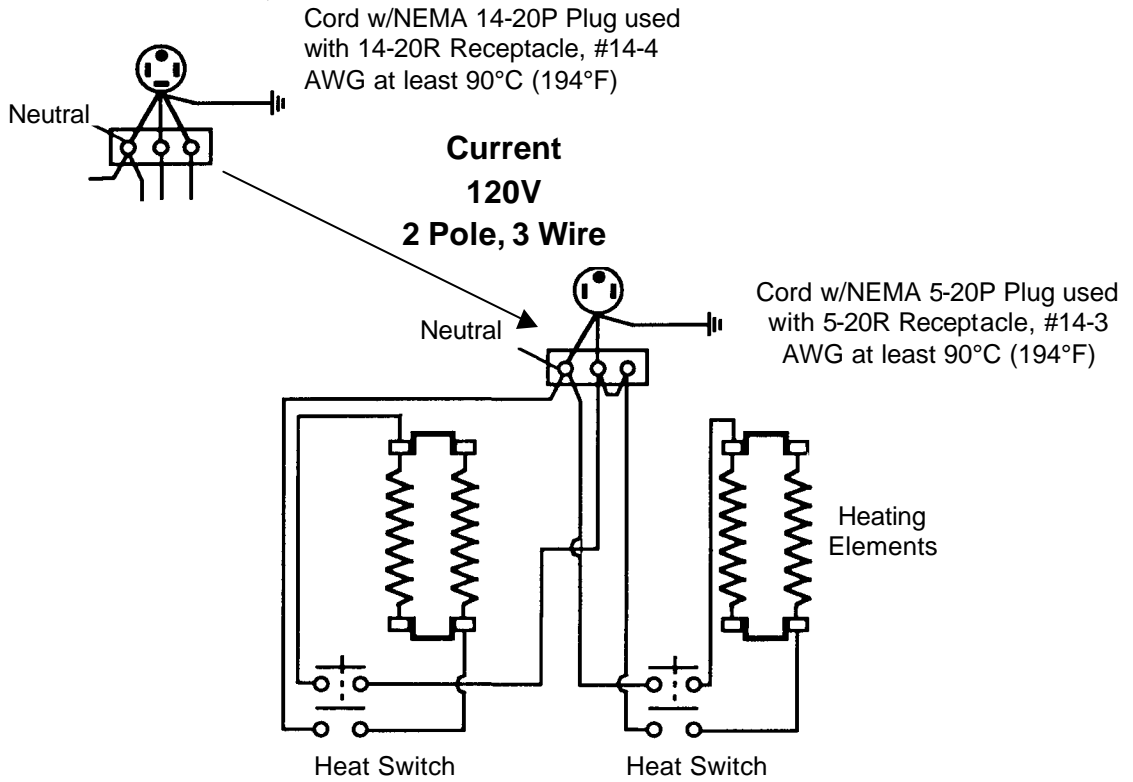
Current
208V and 240V
2 Pole, 3 Wire



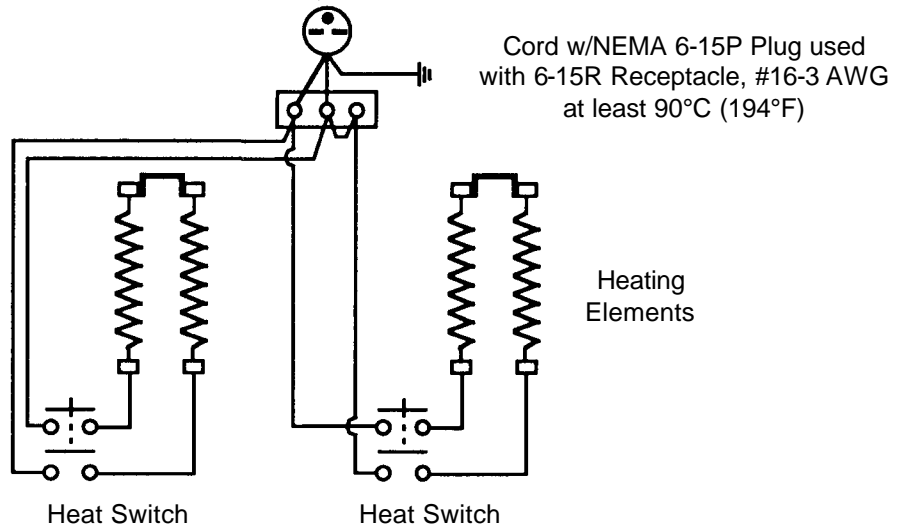
Non-Current 1
20/208V, 115/230V and 120/240V
3 Pole, 4 Wire



**Non-Current 120/208V, 115/230V
and 120/240V 3 Pole, 4 Wire**

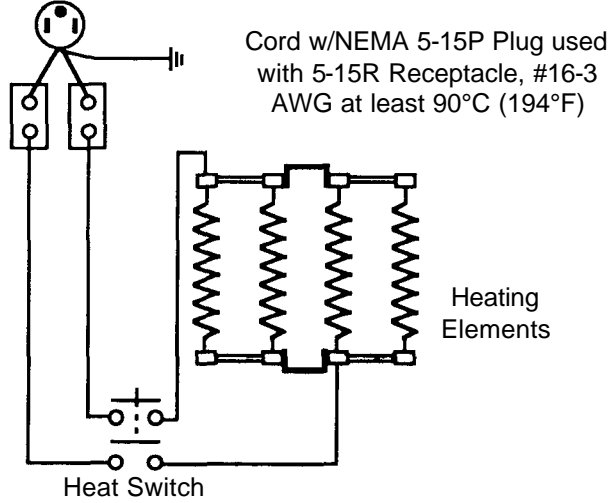


**Non-Current
208V and 240V
2 Pole, 3 Wire**

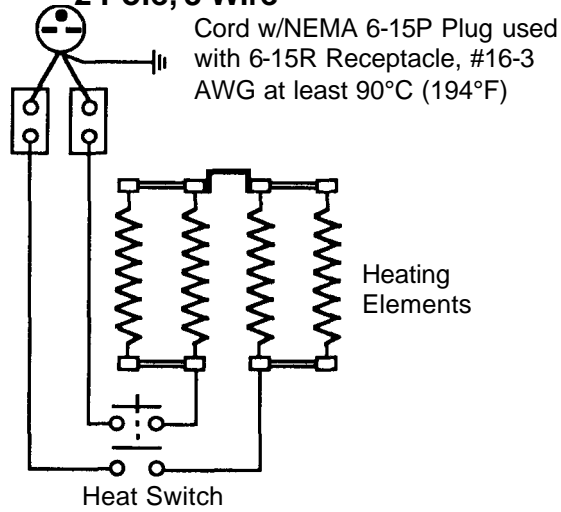


Model 1D22B Schematics

**Current
120V
2 Pole, 3 Wire**



**Non-Current
208V and 240V
2 Pole, 3 Wire**



Model 1BB5 Schematics