

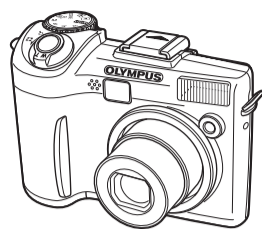
# Quick Start Guide SP-310/SP-350 Start Here

For more information, please refer to the Basic & Advanced Manuals or visit: [www.olympusamerica.com/support](http://www.olympusamerica.com/support)

OLYMPUS IMAGING AMERICA INC.

## BEFORE YOU BEGIN

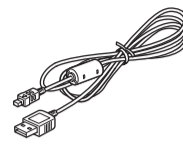
### Gather these items (box contents)



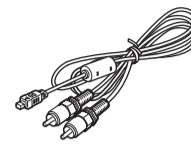
Digital Camera



Lithium Battery Pack (CR-V3)



USB Cable



AV Cable



OLYMPUS Master Software CD-ROM

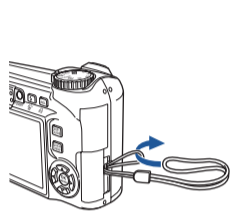
This Quick Start Guide is for both the SP-310 and SP-350. The camera illustrations shown in this manual are based on the SP-350. The model name is specified when a function or configuration is unique to one model.

Items not shown: Strap, Advanced Manual (CD-ROM), Basic Manual, warranty card. Contents may vary depending on purchase location.

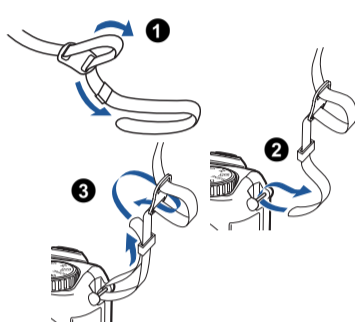
## 1 GET STARTED

### a. Attach the strap

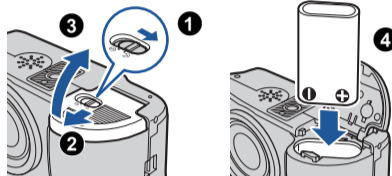
SP-310



SP-350

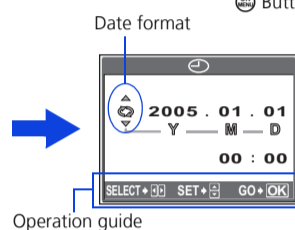
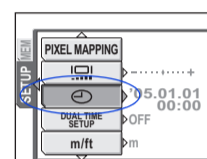
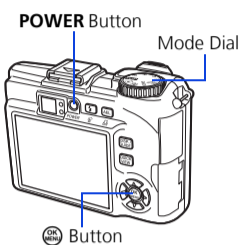


### b. Insert the battery



### c. Set the date and time

- Set the mode dial to **AUTO**, and press the **POWER** button to turn the camera on.
- Press **[MENU]** to display the top menu, and select **[MODE MENU] > [SETUP] > [DATE]**.
- Press **[LEFT]**/**[RIGHT]** to set an item. Press **[LEFT]**/**[RIGHT]** to select the next field.



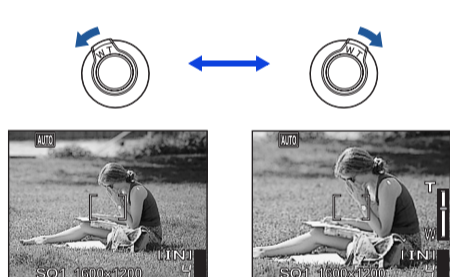
Operation guide

## 2 TAKE A PICTURE

### a. Zoom

Zoom Out:

Zoom In:



### b. Focus

- Using the monitor, place the AF target mark over your subject.

Green Lamp



(Pressed Halfway)



AF Target Mark

- Press and hold the shutter button halfway to lock the focus.

- The green lamp indicates the focus and exposure are locked.

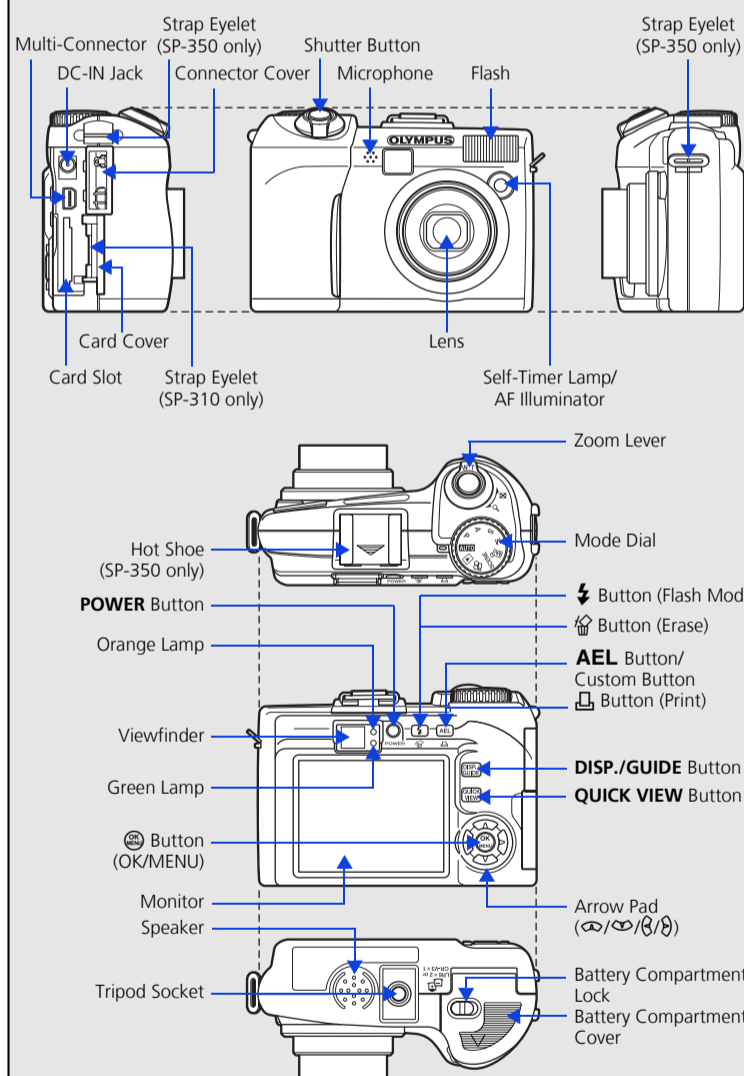
### c. Take the picture

- Press the shutter button completely to take the picture.

(Pressed Completely)



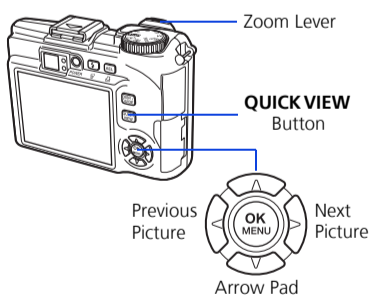
## CAMERA DIAGRAM



## 3 REVIEW OR ERASE A PICTURE

### a. Press the QUICK VIEW button

- The last picture taken will be displayed.

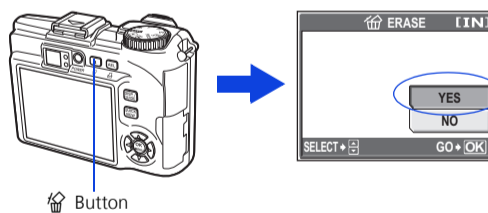


### b. Take a closer look

- Pull the zoom lever toward T or W to zoom in or out.
- Press **[MENU]** to return to the original size.
- Press the arrow pad (**[LEFT]**/**[RIGHT]**) to scroll around.

Press the **QUICK VIEW** button again to return to shooting mode.

### c. To erase a picture



- Display the picture you want to erase.
- Press the **[Erase]** button.
- Select **[YES]**, and press **[MENU]**.

- The picture is permanently erased.

## 4 TRANSFER IMAGES

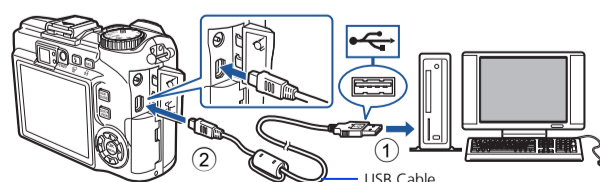
### a. Install the software

- Insert the OLYMPUS Master CD-ROM.
- Windows:** Click the "OLYMPUS Master" button.  
**Macintosh:** Double-click the "Installer" icon.
- Simply follow the on-screen instructions.
  - Remember to register your camera when you install OLYMPUS Master or visit: [www.olympusamerica.com/prodreg](http://www.olympusamerica.com/prodreg)



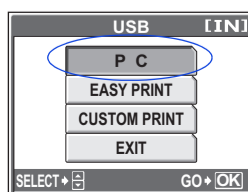
### b. Connect the camera to the computer

- Connect the camera and computer using the USB cable (included).



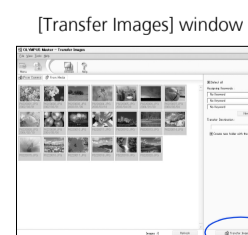
- Select **[PC]** on the monitor, and press **[MENU]**.

- Your PC will now recognize your camera as a removable storage drive.



### c. Transfer images to the computer

- With the camera now connected, open OLYMPUS Master.
  - The [Transfer Images] window is displayed.
- Select the images you want to transfer, and click the [Transfer Images] button.



If the [Transfer Images] window is not displayed automatically:

- Click the "Transfer Images" icon on the OLYMPUS Master main menu.
- Click the "From Camera" icon.

[Transfer Images] button