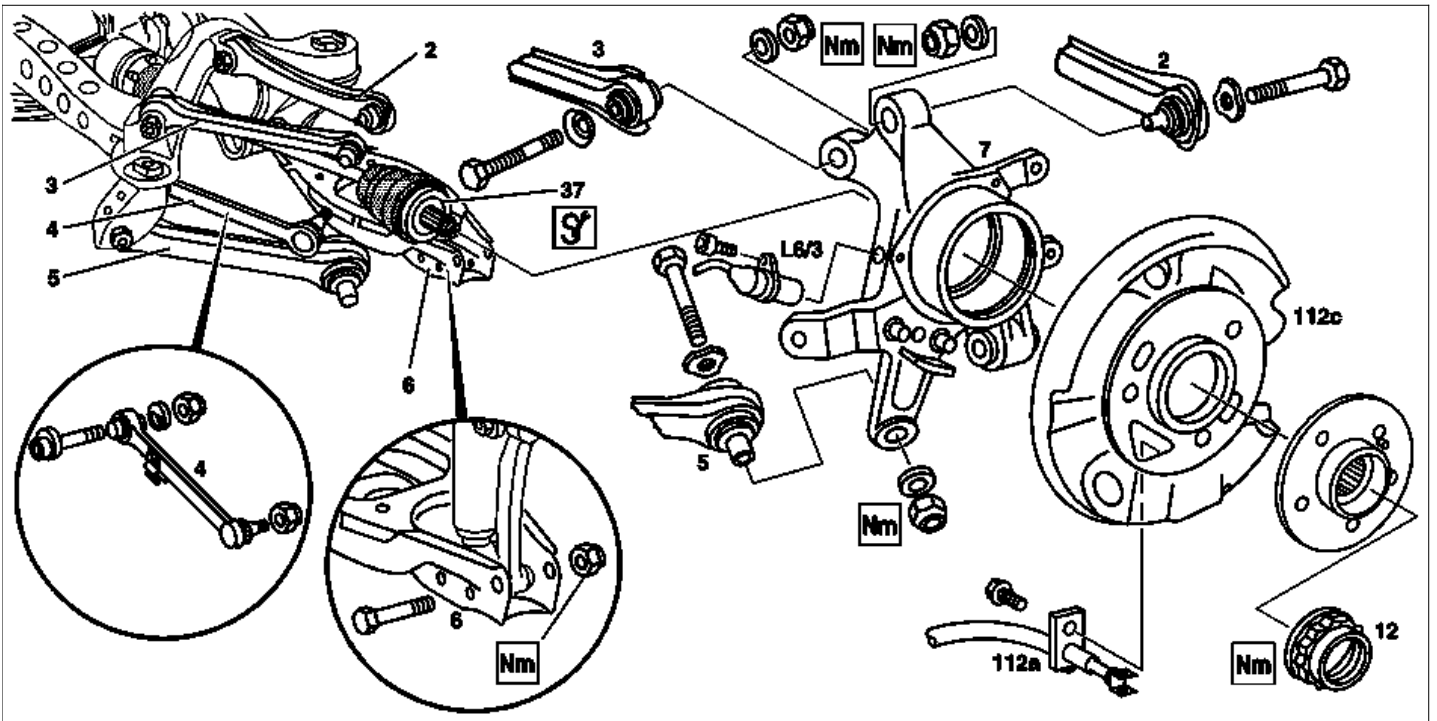


MODEL 129, 170, 202, 208

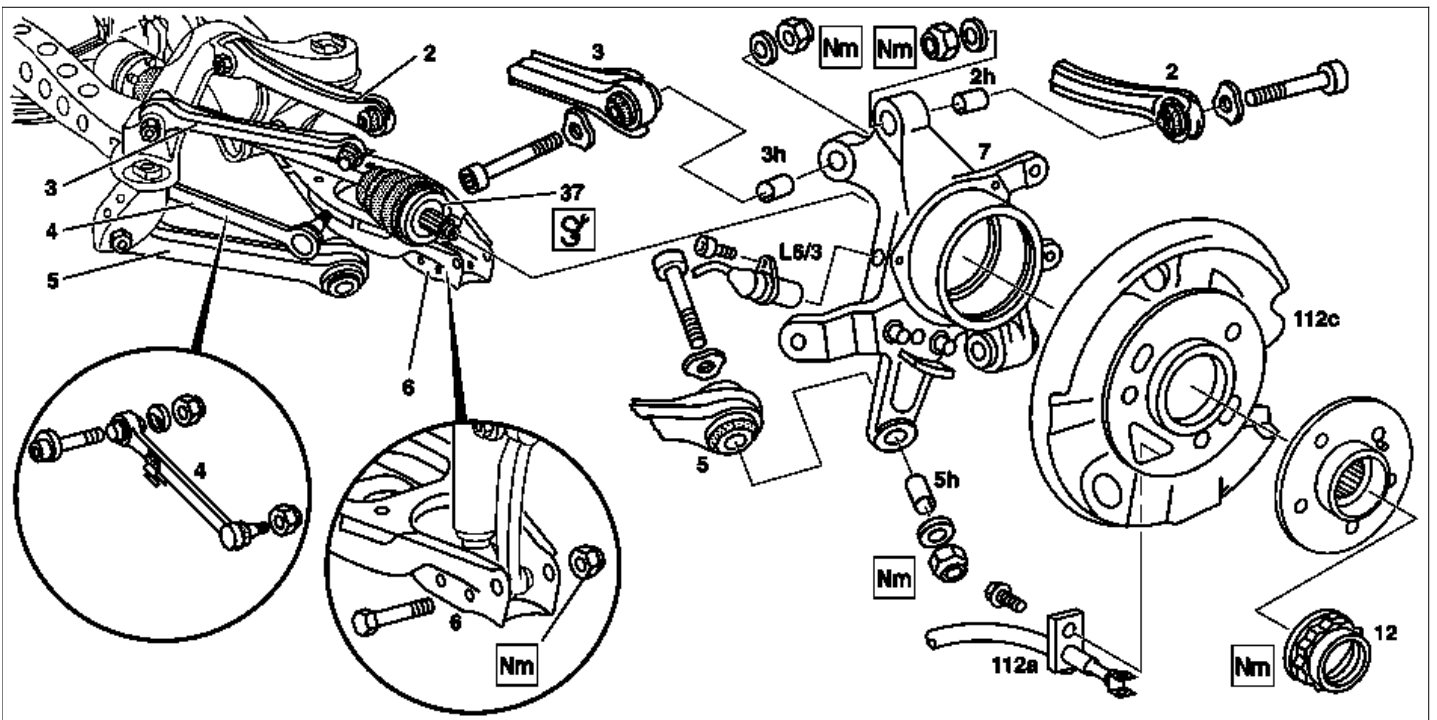
MODEL 210

except CODE (979) Special protection version  
except CODE (Z06) B6 armoring



P35.20-0231-09

Version up to 12/97 or 01/98



P35.20-2020-09

Version as of 01/98 or 02/98

Modification notes

28.2.98	Diameter of wheel carrier bores modified	Model 129, 170, 202, 208 as of 02/98 Model 210 as of 01/98	BT35.20-P-0005-01A
---------	--	---	--------------------

28.2.98	Bolted connection, camber strut to wheel carrier modified	Tightening torque of bolted connection M10 increased from 45 Nm to <b>70 Nm</b> for new bolted connection <b>M12</b> .	BT35.20-P-0007-01A
28.2.98	Bolted connection, tension arm to wheel carrier modified	Model 129, 170, 202, 208 as of 02/98 Model 210 as of 01/98	BT35.20-P-0008-01A
28.2.98	Bolted connection, torque strut to wheel carrier modified	Tightening torque of bolted connection M10 increased from 45 Nm to <b>70 Nm</b> for new bolted connection <b>M12</b> .	BT35.20-P-0006-01A
28.2.98	If a new camber strut, strut rod or thrust arm is mounted on a previous wheel carrier version (dia. of mounting bore in wheel carrier approx. 13.5 mm), it is essential to mount the sleeve (2h, 3h, 5h) in the wheel carrier in order to achieve a reduction in dia. to approx. 12.2 mm	Model 129, 170, 202, 208 as of 02/98 Model 210 as of 01/98, see: ↓  Install sleeve for camber strut in wheel carrier Insert sleeve for strut rod in wheel carrier Insert sleeve for thrust arm in wheel carrier	AR35.20-P-0110-02A AR35.20-P-0111-01A AR35.20-P-0113-01A

Fig. item etc.	Work instructions		
<b>Danger!</b>	<b>Risk of death</b> caused by vehicle slipping or toppling off of the lifting platform.	Align vehicle between columns of vehicle lift and position four support plates at vehicle lift support points specified by vehicle manufacturer.	AS00.00-Z-0010-01A
	Notes on self-locking nuts and bolts		AH00.00-N-0001-01A
	While working on the rear axle care must be taken to ensure that the surface of all aluminum components do not get any scratches, cracks and notches. Otherwise the service life of the parts will be affected		
	Only tighten nuts and bolts of chassis components when vehicle is in a ready-to-drive condition.		
	Remove/install brake shoes of parking brake		AR42.20-P-0530A
<b>Installation</b>	Install camber strut, tension arm, torque strut, track rod and spring control arm at wheel carrier	The rear-axle shaft must be horizontal when tightening the nuts.	
<b>Installation</b>	Check and adjust toe on rear axle	If necessary	AR40.20-P-0332A
2 <b>BT</b>	Camber strut Bolted connection, camber strut to wheel carrier modified	Model 129, 170, 202, 208 as of 02/98 Model 210 as of 01/98 	BT35.20-P-0007-01A *BA35.20-P-1002-02A
2h <b>BT</b> <b>BT</b>	Sleeve in wheel carrier to reduce diameter  Diameter of wheel carrier bores modified Bolted connection, camber strut to wheel carrier modified	Model 129, 170, 202, 208 as of 02/98 Model 210 as of 01/98: ↓ Insert sleeve for camber strut in wheel carrier.	AR35.20-P-0110-02A BT35.20-P-0005-01A BT35.20-P-0007-01A
3 <b>BT</b>	Torque strut  Bolted connection, tension arm to wheel carrier modified	   Model 129, 170, 202, 208 as of 02/98 Model 210 as of 01/98	*129589010300 *202589001000 *BA35.20-P-1002-03A BT35.20-P-0008-01A
3h <b>BT</b> <b>BT</b>	Sleeve in wheel carrier to reduce diameter  Diameter of wheel carrier bores modified Bolted connection, tension arm to wheel carrier modified	Model 129, 170, 202, 208 as of 02/98 Model 210 as of 01/98: ↓ Insert sleeve for strut rod in wheel carrier.	AR35.20-P-0111-01A BT35.20-P-0005-01A BT35.20-P-0008-01A
4	Tie rod	Remove/install tie rod	AR35.20-P-0112B
5 <b>BT</b>	Thrust arm Bolted connection, torque strut to wheel carrier modified	Model 129, 170, 202, 208 as of 02/98 Model 210 as of 01/98 	BT35.20-P-0006-01A *BA35.20-P-1002-05A
5h	Sleeve in wheel carrier to reduce diameter	Model 129, 170, 202, 208 as of 02/98 Model 210 as of 01/98: ↓ <b>Installation:</b> Insert sleeve for thrust arm in wheel carrier.	AR35.20-P-0113-01A

BT	Diameter of wheel carrier bores modified		BT35.20-P-0005-01A
BT	Bolted connection, torque strut to wheel carrier modified		BT35.20-P-0006-01A
6	Spring control arm		*BA35.20-P-1002-01A
7	Wheel carrier	Remove wheel carrier from rear axle shaft.	
BT	Diameter of wheel carrier bores modified	Model 129, 170, 202, 208 as of 02/98 Model 210 as of 01/98	BT35.20-P-0005-01A
12	Twelve-point collar nut	Detach/attach twelve-point collar nut of rear axle shaft and secure.	AR35.30-P-0115-01A
			*BA35.30-P-1001-01A
37	Rear axle shaft	Pull rear axle shaft out of rear axle shaft flange. If the rear axle shaft is difficult to remove: ↓ Push rear axle shaft out of rear axle shaft flange, pull in: Models 129, 202, 210 up to 31.01.96  Model 129, 202, 210 as of 02/96 and Model 170, 208  	AR35.30-P-0115-03A *210589034300 AR35.30-P-0115-03B *210589034300 *210589014000
BT	Rear axle shafts with forged centers (without core hole)	Model 129, 202, 210 as of 02/96	BT35.30-P-0005-01A
112a	Brake cable	Remove/install rear brake cable.	AR42.20-P-0525A
112c	Brake caliper dust shield		
L6/3, L6/4	Left or right rear rpm sensor	Vehicles with ASR, ETS, ESP as of 06/94: ↓ Remove/install left or right rear rpm sensor.	AR42.40-P-0820A

Spring control arm

Number	Designation		Model 208	Model 210 except 210.07 with Code 979 and Code Z06	
BA35.20-P-1002-01A	Self-locking nut, spring control arm to wheel carrier.	Stage 1	Nm	120	120
		Stage 2	Δ°	-	-

Spring control arm

Number	Designation		Model 129	Model 170	Model 202	
BA35.20-P-1002-01A	Self-locking nut, spring control arm to wheel carrier.	Stage 1	Nm	120	120	120
		Stage 2	Δ°	-	-	-

Camber strut

Number	Designation	Model 129	Model 170	Model 202	Model 208

BA35.20-P-1002-02A	Self-locking nut, camber strut to wheel carrier.	M10	Nm	40	40	40	40
		M12	Nm	70	70	70	70

**Nm** Camber strut

Number	Designation			Model 210 except 210.07 with Code 979 and Code Z06
BA35.20-P-1002-02A	Self-locking nut, camber strut to wheel carrier.	M10	Nm	40
		M12	Nm	70

**Nm** Torque strut

Number	Designation			Model 129	Model 170	Model 202	Model 210
BA35.20-P-1002-03A	Self-locking nut, torque strut to wheel carrier	M12	Nm	70	70	70	70
		M16	Nm	-	-	-	230

**Nm** Torque strut

Number	Designation			Model 208
BA35.20-P-1002-03A	Self-locking nut, torque strut to wheel carrier	M12	Nm	70
		M16	Nm	-

**Nm** Torque strut

Number	Designation			Model 129	Model 170	Model 202	Model 208
BA35.20-P-1002-05A	Self-locking nut, thrust arm to wheel carrier	M10	Nm	40	40	40	40
		M12	Stage 1 Nm	70	70	70	70

		Stage 2	∠°	-	-	-	-
--	--	---------	----	---	---	---	---

**Nm** Torque strut

Number	Designation			Model 210 except 210.07 with Code 979 and Code Z06
BA35.20-P-1002-05A	Self-locking nut, thrust arm to wheel carrier	M10	Nm	40
		M12 Stage 1	Nm	70
		Stage 2	∠°	-

**Nm** Rear axle shaft

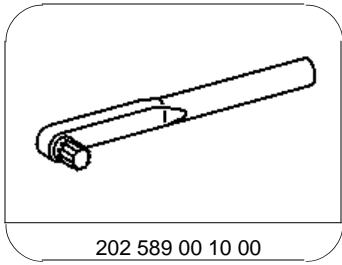
Number	Designation			Model 129	Model 170	Model 202
BA35.30-P-1001-01A	Collar nut, rear axle shaft to rear axle shaft flange	self-locking	Nm	-	-	-
		not self-locking	Nm	220	220	220

**Nm** Rear axle shaft

Number	Designation			Model 208	Model 210.2/6
BA35.30-P-1001-01A	Collar nut, rear axle shaft to rear axle shaft flange	self-locking	Nm	-	350
		not self-locking	Nm	220	320

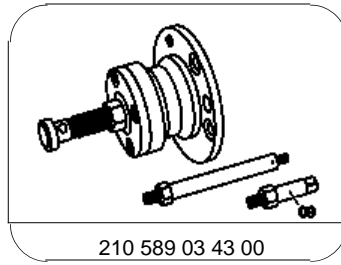
**Nm** Rear axle shaft

Number	Designation			Model 210.0 with special protection
BA35.30-P-1001-01A	Collar nut, rear axle shaft to rear axle shaft flange	self-locking	Nm	350
		not self-locking	Nm	320



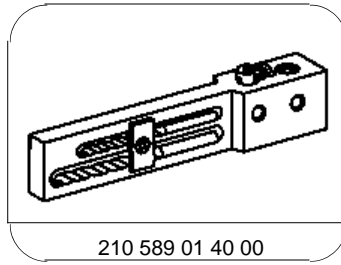
202 589 00 10 00

Retainer wrench



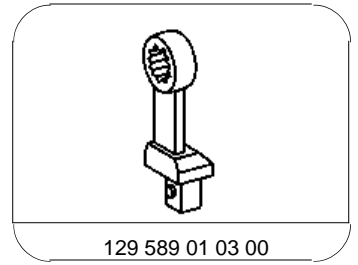
210 589 03 43 00

Extraction and insertion tool



210 589 01 40 00

Bracket



129 589 01 03 00

Ring wrench