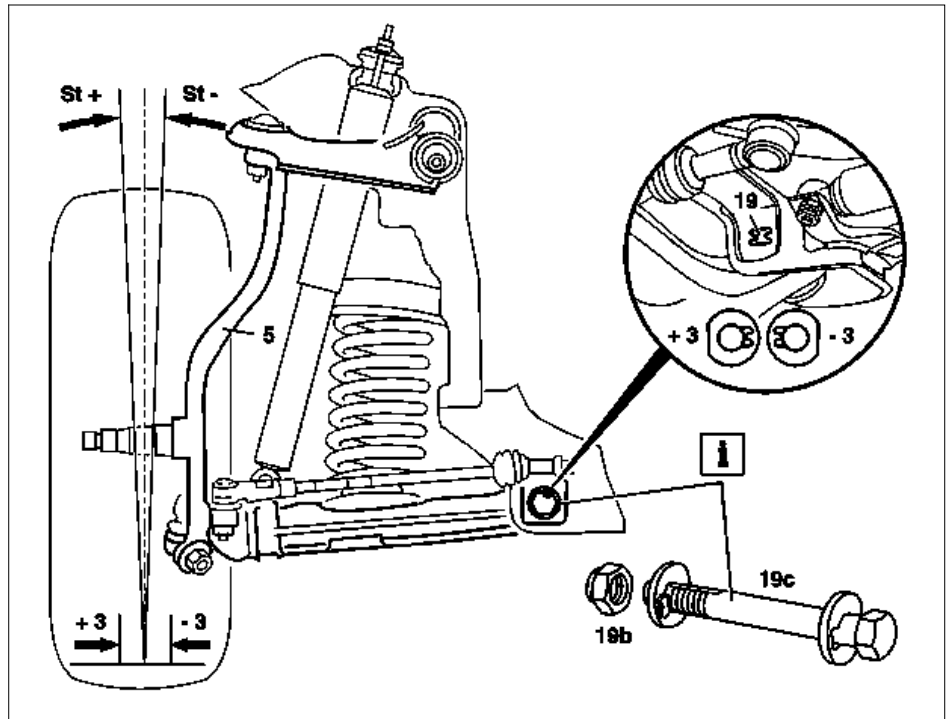


Camber

- 19 Adjustment guide
- 19b Repair kit nut
- 19c Repair bolt
- 19d Adjusting washers

St+ positive camber
St- negative camber

+3 mm adjustment → -20' camber
-3 mm adjustment → +20' camber



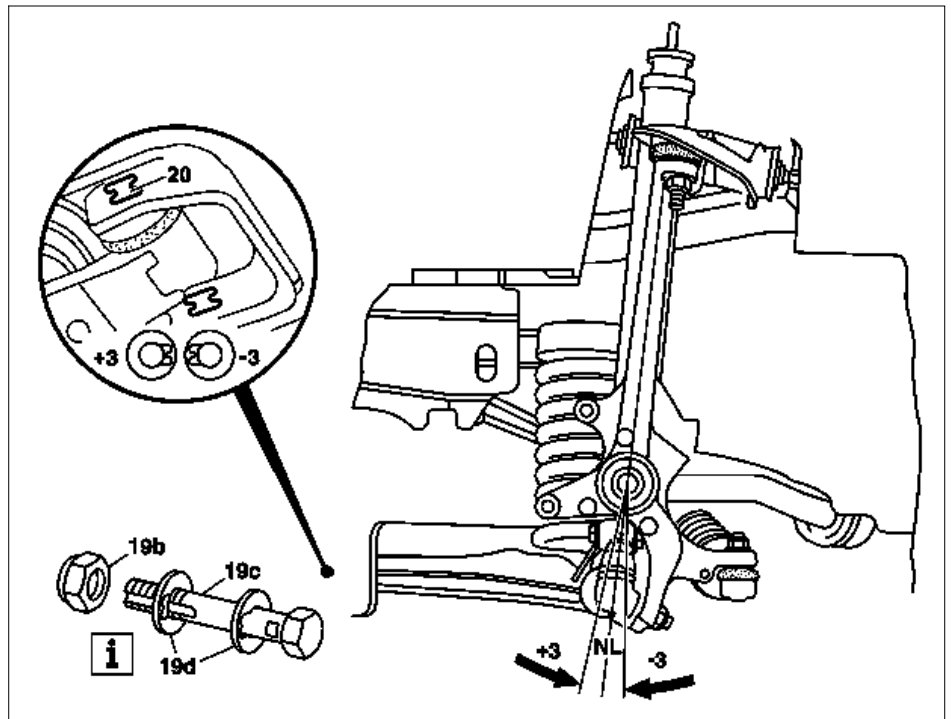
P40.20-0273-06

Caster

- 19b Repair kit nut
- 19c Repair bolt
- 19d Adjusting washers
- 20 Adjustment guide

NL Caster

+3 mm adjustment → -25' caster
-3 mm adjustment → +25' caster










P40.20-0274-06

Modification notes

10.9.03	Reference to adjusting toe-in at the front and rear axle replaced by reference to chassis alignment	Step 11	
---------	---	---------	--

	Check		
--	-------	--	--

 Danger!	Risk of injury from jamming or bruises when working on springs or spring bosses which are tensioned	Use only approved tensioning devices; additionally shield off hazardous area if necessary. Inspect special tools for damage and proper operation (visual inspection). Wear protective gloves.	AS00.00-Z-0001-01A
1	Observe general information on chassis alignment		AR40.20-P-0201A
2.1	Check vehicle level at front and rear axle with Mercedes-Benz measuring device and adjust if necessary	with Mercedes-Benz measuring device Models 210.00/01/02/03/04/05/06/07/20/21/22/23/24/26/27	AR40.20-P-0300C
2.2	Check vehicle level at front and rear axle with electronic inclinometer and adjust if necessary	with electronic inclinometer Models 210.00/01/02/03/04/05/06/07/20/21/22/23/24/26/27 Model 210.6	AR40.20-P-0301C AR40.20-P-0301D
3	Check camber and assign tabular value	Models 210.00/01/02/03/04/05/06/07/20/21/22/23/24/26/27 Model 210.6	AR40.20-P-0322-02C AR40.20-P-0322-02E
4	Check caster and assign tabular value	 Measurement with wheels turned 20°. Models 210.00/01/02/03/04/05/06/07/20/21/22/23/24/26/27 Model 210.6	AR40.20-P-0322-03C AR40.20-P-0322-03D
	Adjust		
5	Raise vehicle.		
6	Clamp front spring		AR32.20-P-0200-01A
7	Install repair bolt (19c)	 Screw on nut (19b) of repair kit until it abuts, but do not tighten yet, so that the rubber mount of the transverse control arm can twist when the vehicle is rocked to settle the suspension.	AR40.20-P-0322-01C
8	Unclamp front springs	 Lower vehicle and settle the suspension by pulling and pushing firmly several times.	
9	Check the vehicle level at the front axle again after the camber and caster adjustment	 The vehicle level must match the dimension established during the initial measurement. with Mercedes-Benz measuring device: Models 210.00/01/02/03/04/05/06/07/20/21/22/23/24/26/27 with electronic inclinometer: Models 210.00/01/02/03/04/05/06/07/20/21/22/23/24/26/27 Model 210.6	AR40.20-P-0300C AR40.20-P-0301C AR40.20-P-0301D
10	Tighten nut (19b) of repair kit	 The repair bolt (19c) must not be twisted after fixing in position by the adjusting washers and should be counterheld when tightening the nut (19b) of the repair kit. 	*BA40.20-P-1005-01A
11	Check toe-in at front and rear axle and adjust if necessary.	See ↓ Perform chassis alignment check	AR40.20-P-0200A

 **Chassis alignment**

Number	Designation	Model 210
BA40.20-P-1005-01A	Nut, repair kit	Nm 110