

# Single Diagnosis Menu :

The Ultimate Pro software is divided in 5 'Menu's'.

Click the specific button in order to enter the specific 'Menu'.

- ▶ Driveline
- ▶ Chassis Systems
- ▶ Body
- ▶ Information and communication
- ▶ Airco

**Carsoft MB Ultimate Pro**

Driveline

Chassis Systems

Body

Information and Communication

Air-Conditioning

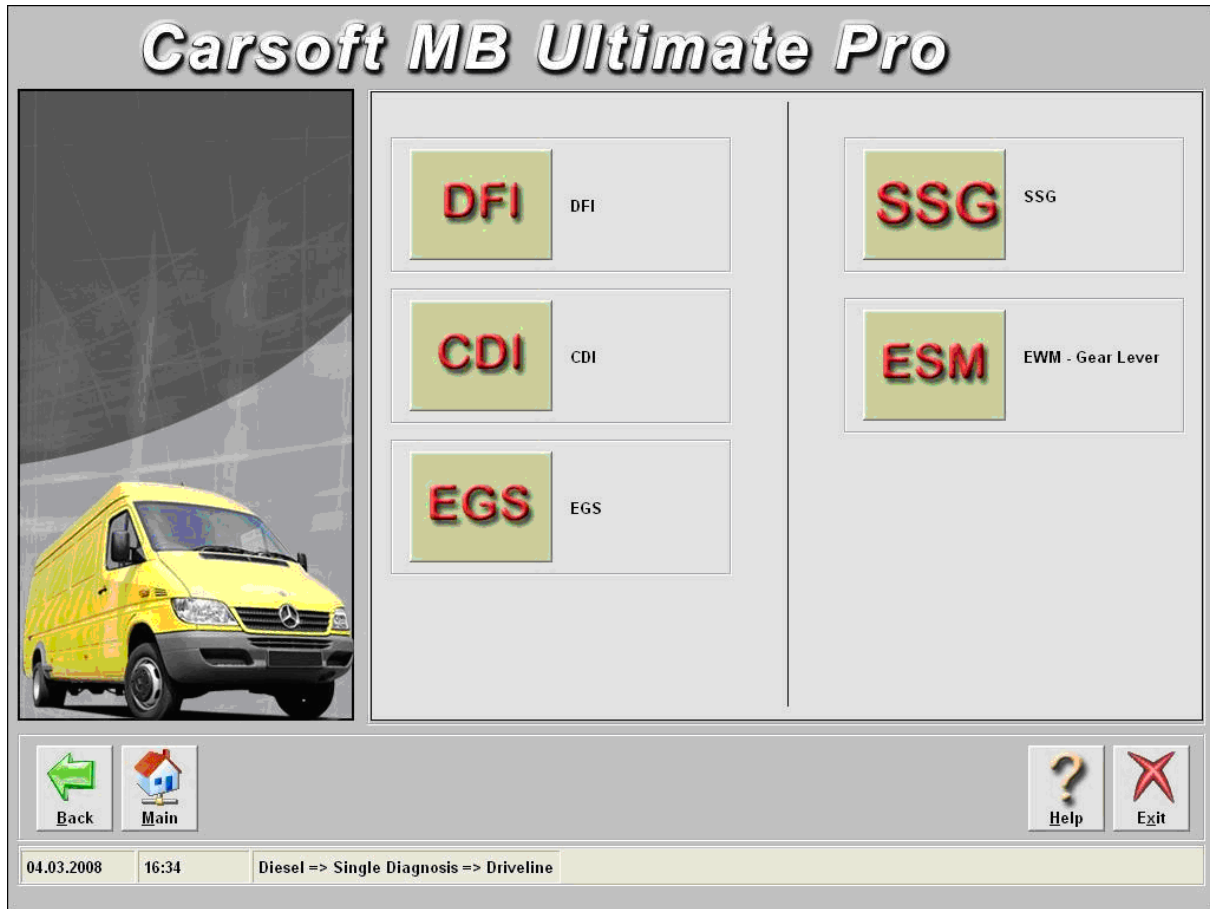
Back Main Help Exit

04.03.2008 16:34 Diesel => Single Diagnosis

► **CONTROL UNIT / Menu Listing :**

	<b>German</b>	<b>English</b>	<b>Description</b>
<b>Airco</b>	<b>AIRCO</b>	<b>AIRCO</b>	Air conditioning Control Unit
<b>Body</b>	<b>AB</b>	<b>AB</b>	Airbag Control Unit
<b>Body</b>	<b>EDW</b>	<b>ATA</b>	Anti Theft Alarm Control Unit
<b>Body</b>	<b>FBS</b>	<b>DAS</b>	Drive Authorization Signal Control Unit
<b>Chassis</b>	<b>ABS</b>	<b>ABS</b>	ABS Control Unit
<b>Chassis</b>	<b>BAS</b>	<b>BAS</b>	BAS Control Unit
<b>Chassis</b>	<b>ESP</b>	<b>ESP</b>	ESP Control Unit
<b>Drive</b>	<b>CDI</b>	<b>CDI</b>	Common Rail Diesel Engine Control Unit
<b>Drive</b>	<b>EGS</b>	<b>EGS</b>	Electronic Gearbox Control Unit
<b>Drive</b>	<b>ERE</b>	<b>DFI</b>	Diesel Engine Control Unit
<b>Drive</b>	<b>EVE</b>	<b>IFI</b>	Diesel Engine Control Unit
<b>Drive</b>	<b>EWM</b>	<b>ESM</b>	Electronic slever Control Unit
<b>Drive</b>	<b>HFM</b>	<b>HFM</b>	Petrol Engine Control Unit
<b>Drive</b>	<b>ME</b>	<b>ME</b>	Petrol Engine Control Unit
<b>Drive</b>	<b>PMS</b>	<b>PMS</b>	Petrol Engine Control Unit
<b>Drive</b>	<b>SSG</b>	<b>SSG</b>	Sprintshift Control Unit
<b>Info</b>	<b>KI</b>	<b>IC</b>	Instrument Cluster Control Unit

**Example: W211 Diesel Vehicle Drive Line Selection**



**Click the button from the control unit that you want to diagnose.**

**If you want to open the CDI functions, just click the CDI button:**



Example: from the functions possible

The number of functions is depending from 'control unit' and 'vehicle selection'.

The image displays the 'Carsoft MB Ultimate Pro' software interface. At the top, the title 'Carsoft MB Ultimate Pro' is centered in a large, bold, italicized font. On the left side, there is a vertical image of a yellow Mercedes-Benz van. The main area is divided into several functional boxes: 1. A box with a yellow background containing error codes 'P0100', 'C1024', and 'B19FE', with the label 'Read / Erase Error Codes' to its right. 2. A box with an orange background showing live data '12,2 V', '24,4°C', and '20,0 mA', with the label 'Live Data' to its right. 3. A box with a yellow background showing ECU coding '0011001', '1100110', and '1010101', with the label 'ECU Coding' to its right. 4. A box with a blue background containing the word 'TEST' in large orange letters and 'Function Test Menu' below it. At the bottom, there is a navigation bar with icons for 'Back' (green arrow), 'Main' (house), 'Info' (wrench), 'Help' (question mark), and 'Exit' (red X). Below the navigation bar, a status bar displays the date '04.03.2008', time '16:50', and the current path 'Diesel =&gt; Single Diagnosis =&gt; Driveline =&gt; CDI'.

► **Menu Buttons (1/2) :**



**Back** ► To return to the previous screen



**Main** ► To return to the Main Menu



**Start** ► To start the total diagnosis



**Help** ► Help file



**Scan** ► To start scanning the error memory



**Erase Codes** ► To erase the error codes



**No Com.** ► No Communication with the vehicle

► **Menu Buttons (2/2) :**



**Save** ► To save the data to disk



**Print** ► To print the data on paper



**Exit** ► To exit the program