

Total Diagnosis :

The 'Total Diagnosis' makes a quick overview from the control units actually build in into the car. It gives also an overview of the status from each control unit.

To start the 'Total Diagnosis': Click the 'Total Diagnosis' button.



Then click 'START'



► SINGLE DIAGNOSIS :

The 'Single Diagnosis' gives you detailed information about the control units and the status of the control unit.

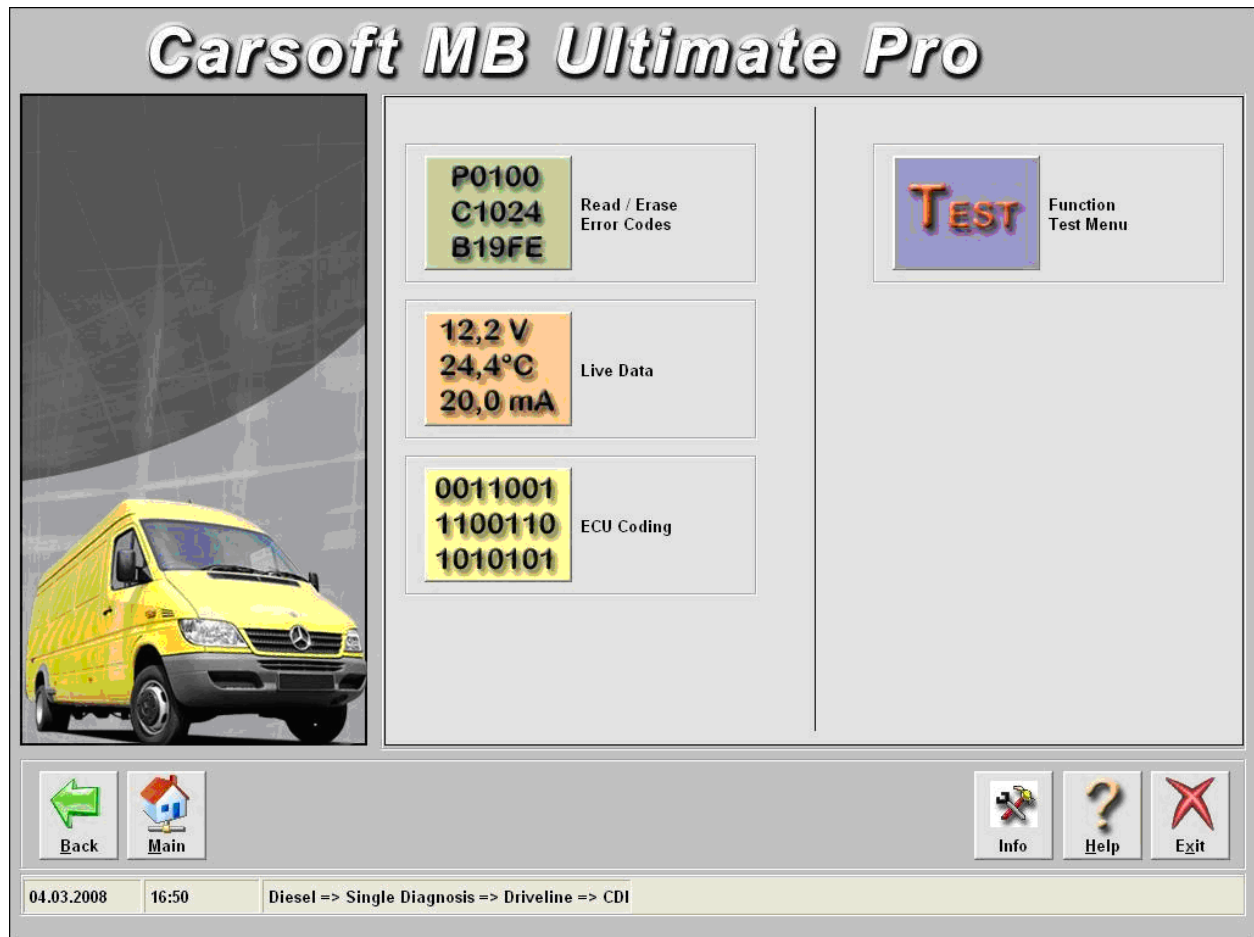
To go to 'Single Diagnosis': Click the 'Single Diagnosis' button.



The control units are divided in the following menus :

1. ► Driveline
2. ► Chassis Systems
3. ► Body
4. ► Information and Communications
5. ► Airco

In these menus, depending to the selected car, car-type and control unit, multiple functions are possible:



1. ► Read/Erase Fault Codes
2. ► Live Data
3. ► Component
4. ► Component Tests
5. ► Component Activations
6. ► Control Unit Coding
7. ► Component Coding
8. ► Adaptation Functions
9. ► Etc. ...

► Menu Buttons (1/2) :



Back ► To return to the previous screen



Main ► To return to the Main Menu



Start ► To start the total diagnosis



Help ► Help file



Scan ► To start scanning the error memory



Erase Codes ► To erase the error codes



No Com. ► No Communication with the vehicle

► **Menu Buttons (2/2) :**



Save ► To save the data to disk



Print ► To print the data on paper



Exit ► To exit the program

► **CONTROL UNIT ABRIVIATIONS :**

German	English	Description
AB	AB	Airbag Control Unit
ABS	ABS	ABS Control Unit
AIRCO	AIRCO	Air conditioning Control Unit
BAS	BAS	BAS Control Unit
CDI	CDI	Common Rail Diesel Engine Control Unit
EDW	ATA	Anti Theft Alarm Control Unit
EGS	EGS	Electronic Gearbox Control Unit
ERE	DFI	Diesel Engine Control Unit
ESP	ESP	ESP Control Unit
EVE	IFI	Diesel Engine Control Unit
EWM	ESM	Electronic slever Control Unit
FBS	DAS	Drive Authorization Signal Control Unit
HFM	HFM	Petrol Engine Control Unit
KI	IC	Instrument Cluster Control Unit
ME	ME	Petrol Engine Control Unit
PMS	PMS	Petrol Engine Control Unit