

Single Diagnosis Menu :

The Ultimate Pro software is divided in 5 'Menu's'.

Click the specific button in order to enter the specific 'Menu'.

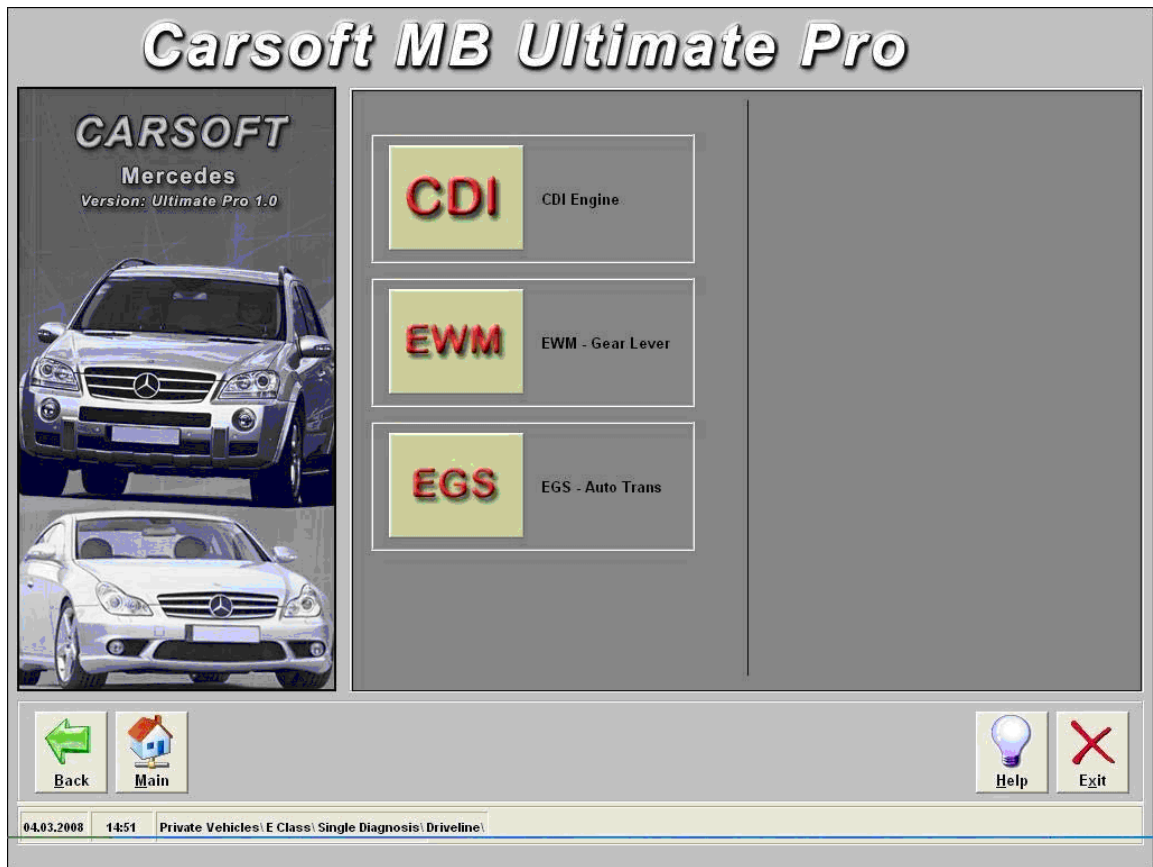
- ▶ Driveline
- ▶ Chassis Systems
- ▶ Body
- ▶ Information and communication
- ▶ Airco



► **CONTROL UNIT / Menu Listing :**

	German	English	Description
Airco	AIRCO	AIRCO	Air conditioning Control Unit
Body	AB	AB	Airbag Control Unit
Body	EDW	ATA	Anti Theft Alarm Control Unit
Body	FBS	DAS	Drive Authorization Signal Control Unit
Chassis	ABS	ABS	ABS Control Unit
Chassis	BAS	BAS	BAS Control Unit
Chassis	ESP	ESP	ESP Control Unit
Drive	CDI	CDI	Common Rail Diesel Engine Control Unit
Drive	EGS	EGS	Electronic Gearbox Control Unit
Drive	ERE	DFI	Diesel Engine Control Unit
Drive	EVE	IFI	Diesel Engine Control Unit
Drive	EWM	ESM	Electronic slever Control Unit
Drive	HFM	HFM	Petrol Engine Control Unit
Drive	ME	ME	Petrol Engine Control Unit
Drive	PMS	PMS	Petrol Engine Control Unit
Drive	SSG	SSG	Sprintshift Control Unit
Info	KI	IC	Instrument Cluster Control Unit

Example: W211 Diesel Vehicle Drive Line Selection



Click the button from the control unit that you want to diagnose.

If you want to open the CDI functions, just click the CDI button:




Example: from the functions possible

The number of functions is depending from 'control unit' and 'vehicle selection'.

Carsoft MB Ultimate Pro

CARSOFT
Mercedes
Version: Ultimate Pro 1.0



P0100
C1024
B19FE

Read / Erase
Error Codes

12,2 V
24,4°C
20,0 mA



Live Data




0011001
1100110
1010101

ECU Coding

TEST

W211 Test
Functions

 Back Main

 Info Help Exit

04.03.200814:28Private Vehicles\E Class\ Single Diagnosis\ Driveline\ CDI Engine\

► Menu Buttons (1/2) :



Back ► To return to the previous screen



Main ► To return to the Main Menu



Start ► To start the total diagnosis



Help ► Help file



Scan ► To start scanning the error memory



Erase Codes ► To erase the error codes



No Com. ► No Communication with the vehicle

► **Menu Buttons (2/2) :**



Save ► To save the data to disk



Print ► To print the data on paper



Exit ► To exit the program