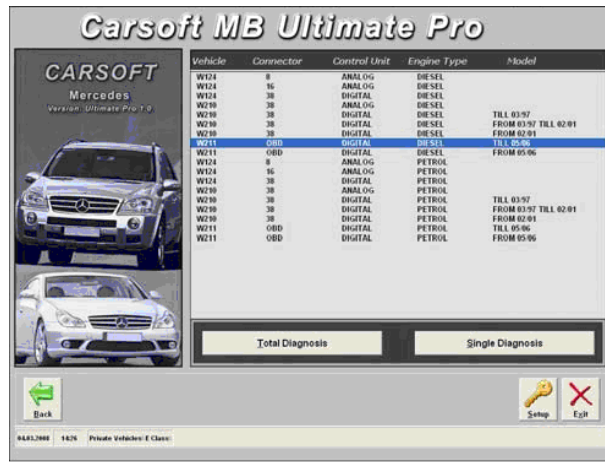


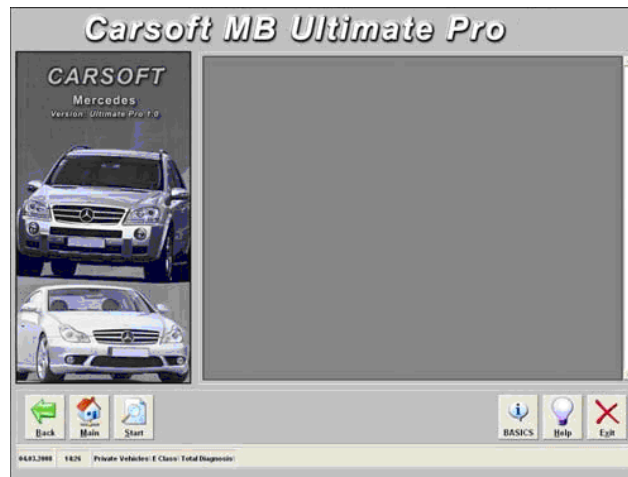
Total Diagnosis :

The 'Total Diagnosis' makes a quick overview from the control units actually build in into the car. It gives also an overview of the status from each control unit.

To start the 'Total Diagnosis': Click the 'Total Diagnosis' button.



Then click 'START'



► SINGLE DIAGNOSIS :

The 'Single Diagnosis' gives you detailed information about the control units and the status of the control unit.

To go to 'Single Diagnosis': Click the 'Single Diagnosis' button.

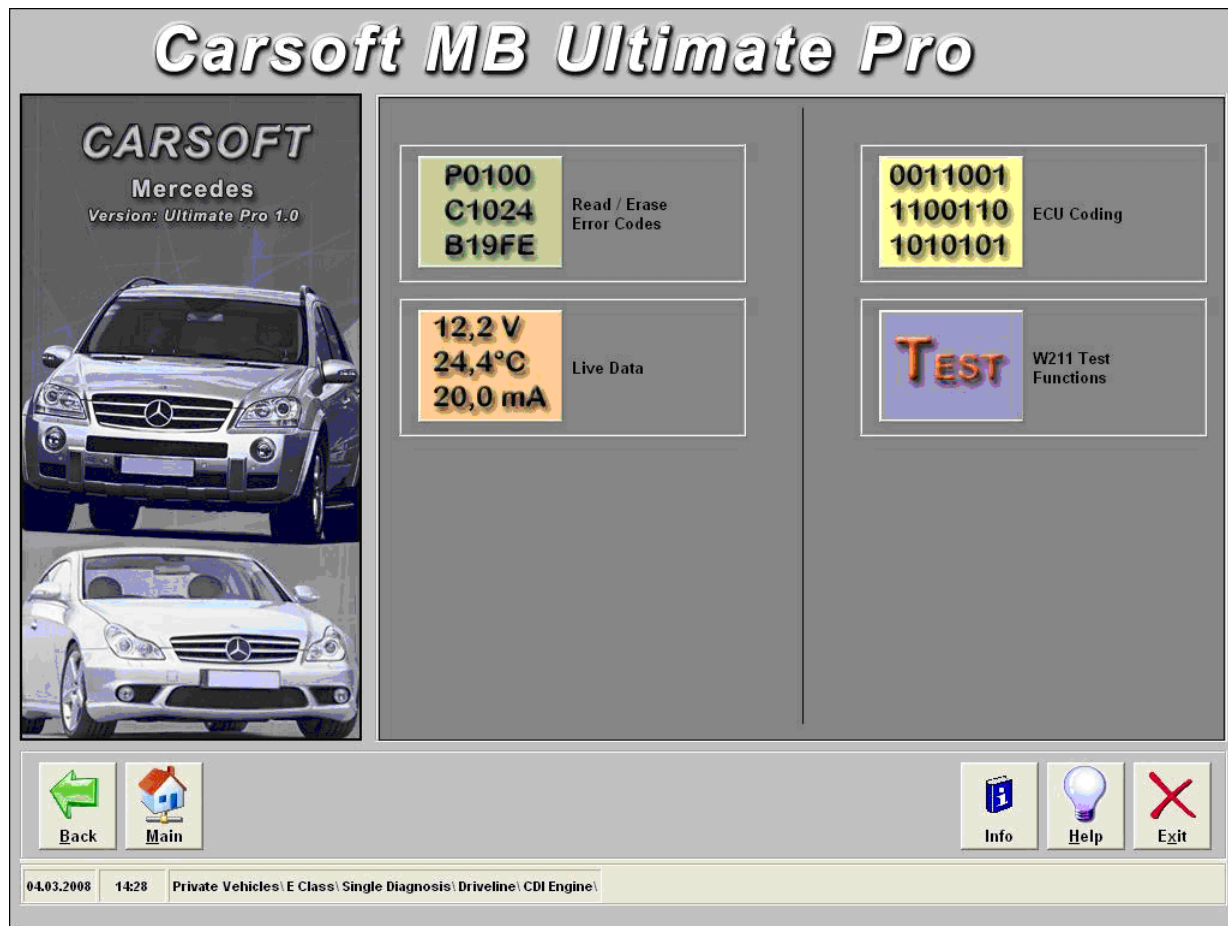


The control units are divided in the following menus :

1. ► Driveline
2. ► Chassis Systems
3. ► Body
4. ► Information and Communications
5. ► Airco

In these menus, depending to the selected car, car-type and control unit, multiple

functions are possible:



1. ► Read/Erase Fault Codes
2. ► Live Data
3. ► Component
4. ► Component Tests
5. ► Component Activations
6. ► Control Unit Coding
7. ► Component Coding
8. ► Adaptation Functions
9. ► Etc. ...

► Menu Buttons (1/2) :



Back ► To return to the previous screen



Main ► To return to the Main Menu



Start ► To start the total diagnosis



Help ► Help file



Scan ► To start scanning the error memory



Erase Codes ► To erase the error codes



No Com. ► No Communication with the vehicle

► **Menu Buttons (2/2) :**



Save ► To save the data to disk



Print ► To print the data on paper



Exit ► To exit the program

► CONTROL UNIT ABRIVIATIONS :

German	English	Description
AB	AB	Airbag Control Unit
ABR	ABR	Adaptive Brake System
ABS	ABS	ABS Control Unit
AGW	AGW	Audio Gateway Control Unit
AHE	AHE	Trailer Recognition Control Unit
AIRCO	AIRCO	Air conditioning Control Unit
AIRMatic	AIRMatic	Airmatic System Control Unit
AKR	AKR	Semi Automatic Gear Box Control Unit W168
BAS	BAS	BAS Control Unit
CDI	CDI	Common Rail Diesel Engine Control Unit
Command	Command	Command
DBE	OCP	Overhead Control Panel Control Unit
EDW	ATA	Anti Theft Alarm Control Unit
EGS	EGS	Electronic Gearbox Control Unit
ERE	DFI	Diesel Engine Control Unit
ESP	ESP	ESP Control Unit
ESVVL	ESAFL	Electronic Seat Adjustment Control Unit
ESVVR	ESAFL	Electronic Seat Adjustment Control Unit
EVE	IFI	Diesel Engine Control Unit
EWM	ESM	Electronic slever Control Unit
EZS	EIS	Electronic Ignition System
FBS	DAS	Drive Authorization Signal Control Unit
HFM	HFM	Petrol Engine Control Unit
KI	IC	Instrument Cluster Control Unit
LWR	HRA	Headlight Range Adjustment Control Unit
ME	ME	Petrol Engine Control Unit
MRM	SCM	Steering Column Module Control Unit
OBF	UCP	Upper Control Panel Control Unit
PMS	PMS	Petrol Engine Control Unit
PSE	PSE	Pneumatic Control Unit
PTS	PTS	Parktronic System Control Unit
SAM	SAM	Signal Acquisition Module Control Unit
SAMH	SAMR	Rear Signal Acquisition Module Control Unit

SAMV	SAMF	Front Signal Acquisition Module Control Unit
SAMVL	SAMFL	Front Left Signal Acquisition Module Control Unit
SAMVR	SAMFR	Front Right Signal Acquisition Module Control Unit
SBC	SBC	Sensitive Brake Control Unit
SIH	HS	Heated Seats Control Unit
SSG	SSG	Sprintshift Control Unit
System	System	System Control Unit
TSG	TSG	Door Control Unit
TSGHL	DCMRL	Rear Left Door Control Unit
TSGHR	DCMRR	Rear Right Door Control Unit
TSGVL	DCMFL	Front Left Door Control Unit
TSGVR	DCMFR	Front Right Door Control Unit
UBF	LCP	Lower Control Panel Control Unit
UHI	CTEL	Telephone
UVS	RST	Roadster Roof Control Unit
VD	VD	Vario Roof Control Unit
ZGW	CGW	Central Gateway Control Unit